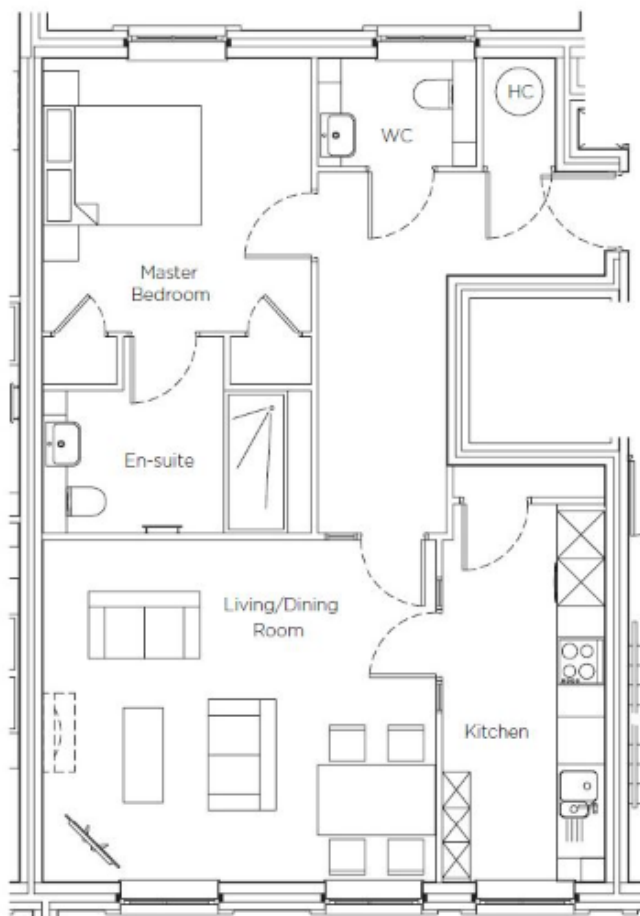
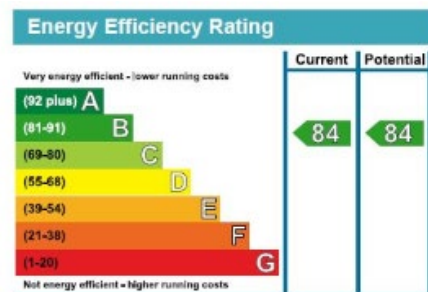


Audley Inglewood

54 Inglewood House
1 Bedroom first floor apartment



Internal Measurements	Metric (m)	Imperial (ft)
Kitchen	4.79m x 2.05m	15'9" x 6'9"
Living/dining room	4.98m x 4.34m	16'4" x 14'3"
Master bedroom	4.13m x 3.39m	13'7" x 11'1"
Total Sq.ft	706	



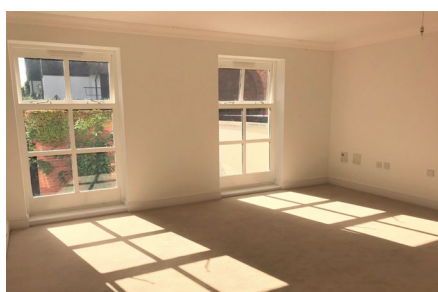
Audley Inglewood
Templeton Road, Kintbury, Hungerford, RG17 9AA
01488 682 100 inglewoodsales@audleyvillages.co.uk
www.audleyvillages.co.uk

Built in wardrobes in bedrooms have not been included in the overall dimensions. Maximum measurements shown. These pages are intended for marketing purposes only. Designs vary according to plot and all details should be checked at the Sales office. April 2019



Audley Inglewood

54 Inglewood House
1 Bedroom first floor apartment



1 bedroom first floor apartment

Overlooking the Inglewood grounds, this charming one bedroom dual aspect apartment has a bright and airy living/dining room with floor to ceiling windows. There is a separate modern SieMatic kitchen with integrated appliances and a guest W.C. The master bedroom has fitted wardrobes as well as an en suite shower room with Villeroy & Boch sanitaryware.



Property specifications

- Generous living/dining room with floor to ceiling windows
- Separate SieMatic kitchen
- Bedroom with fitted wardrobes and an en suite shower room
- Separate W.C
- Lift access



Price £365,000 (other fees apply)

Monthly management fee £783.07

Bistro credit £57.86

Annual Ground rent £500

Viewing by appointment with the sales office.

Audley Inglewood
Templeton Road, Kintbury, Hungerford, RG17 9AA
01488 682 100 inglewoodsales@audleyvillages.co.uk
www.audleyvillages.co.uk

