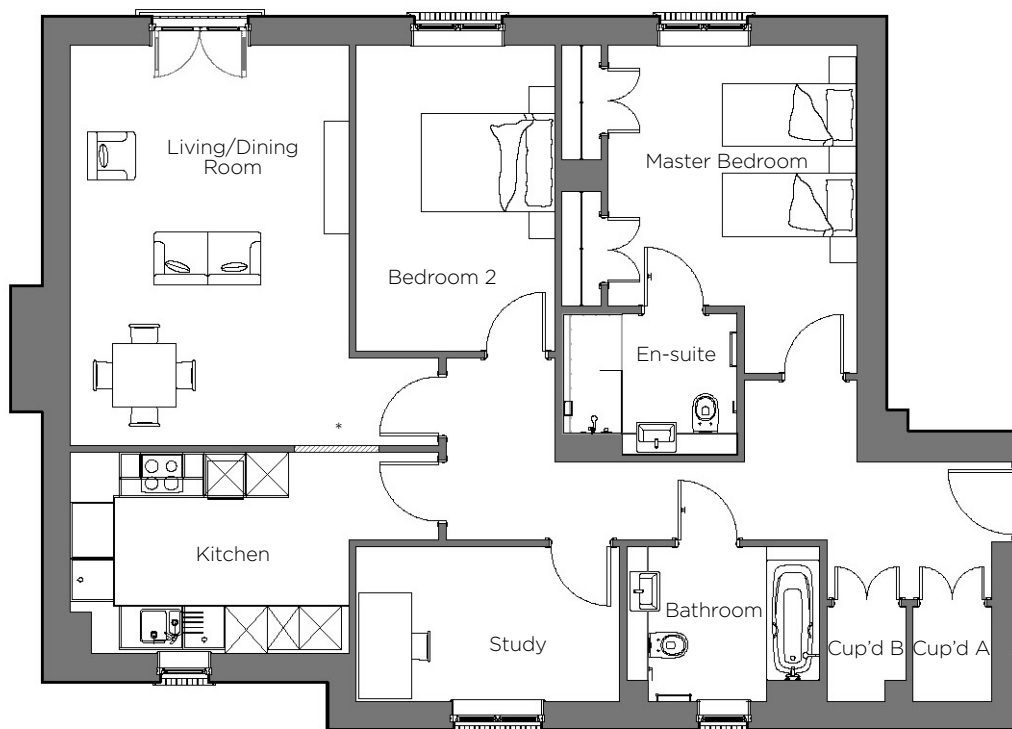


Audley Binswood

First Floor Apartment
21 Henley Hall (Plot 08)



Internal Measurements	Metric (m)	Imperial (ft)
Living/Dining Room	5.68m x 3.95m	18'64" x 12'96"
Kitchen	3.95m x 2.85m	12'96" x 9'35"
Master Bedroom	3.71m x 3.53m	12'17" x 11'58"
Bedroom 2	4.35m x 2.83m	14'27" x 9'28"
Study	3.75m x 2.19m	12'30" x 7'19"

*Open plan option available

Audley Binswood
Binswood Avenue, Leamington Spa CV32 5SE
01926 339 484
www.audleyvillages.co.uk

Built-in wardrobes in bedrooms have not been included in the overall dimensions.
Maximum measurements shown. These pages are intended for marketing purposes only.
Designs vary according to plot and all details should be checked at the Sales Office.
September 2017



GOOD MOVE