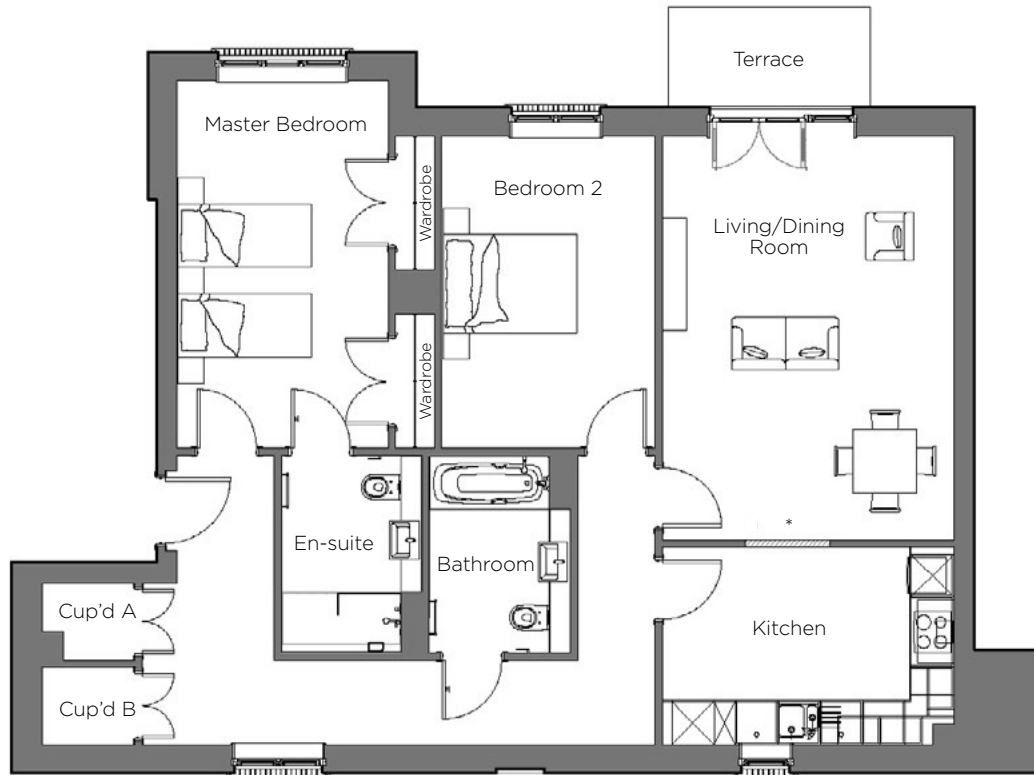


# Audley Binswood

Ground Floor Apartment  
Kenilworth Place, Plot 03



Internal Measurements	Metric (m)	Imperial (ft)
Living/Dining Room	5.74m x 4.14m	18'83" x 13'58"
Kitchen	4.14m x 2.80m	13'58" x 9'19"
Master Bedroom	5.22m x 3.00m	17'13" x 9'84"
Bedroom 2	4.43m x 3.04m	14'53" x 9'97"

\*Open plan option available



Audley Binswood  
Binswood Avenue, Leamington Spa CV32 5SE  
01926 339 484  
[www.audleyretirement.co.uk](http://www.audleyretirement.co.uk)

Built-in wardrobes in bedrooms have not been included in the overall dimensions.  
Maximum measurements shown. These pages are intended for marketing purposes only.  
Designs vary according to plot and all details should be checked at the Sales Office.  
September 2017



GOOD MOVE