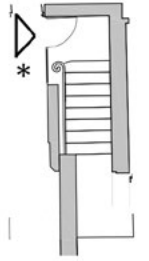
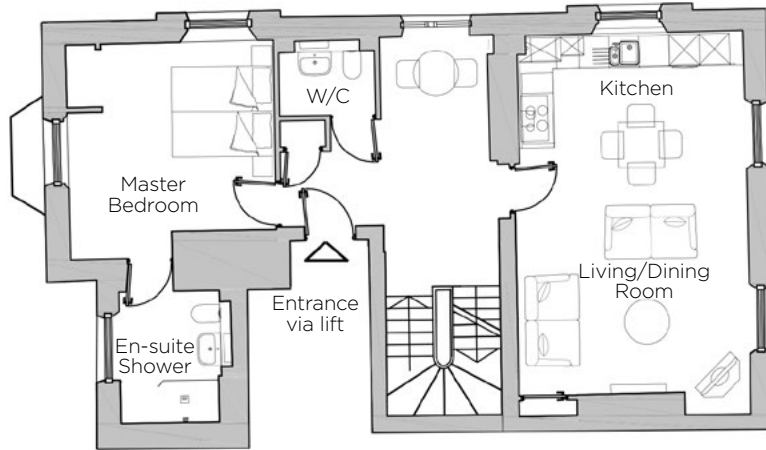


# Audley Ellerslie

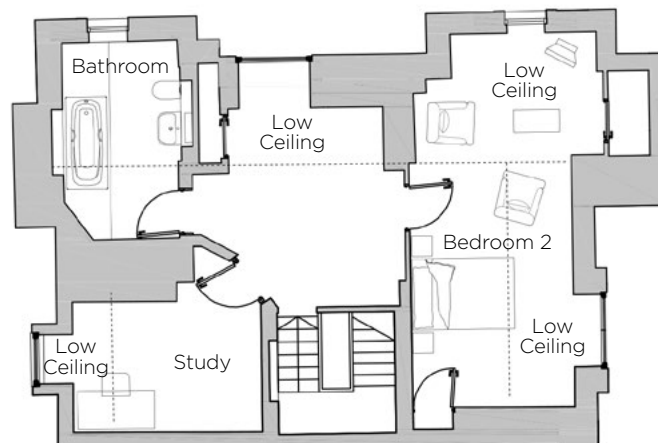
5 Southlands  
 First/Second Floor Apartment  
 Plot 17



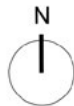
Ground Floor



First Floor



Second Floor

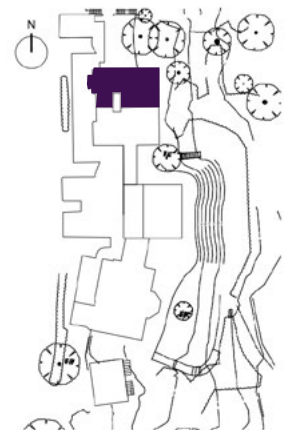


\* 2 entrances:  
 via lift & through stairs

Internal Measurements	Metric (m)	Imperial (ft)
Living/Dining Room/Kitchen	7.62m x 4.63m	25'0" x 15'2"
Master Bedroom	4.13m x 3.78m	13'7" x 12'5"
Bedroom 2	7.38m x 3.75m	24'3" x 12'3"
Study	4.28m x 3.67m	14'0" x 12'0"

Total Area 1751 sq ft

Audley Ellerslie  
 Abbey Road, Malvern, Worcestershire WR14 3HL  
 01684 438 400  
[www.audleyretirement.co.uk](http://www.audleyretirement.co.uk)



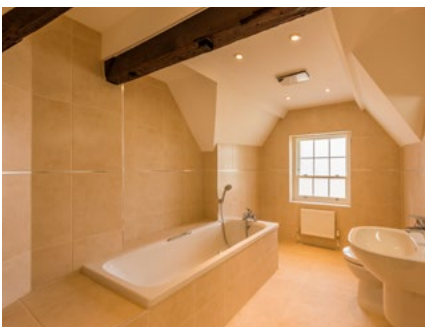
Built-in wardrobes in bedrooms have not been included in the overall dimensions.  
 Maximum measurements shown. These pages are intended for marketing purposes only.  
 Designs vary according to plot and all details should be checked at the Sales Office.  
 716031



GOOD MOVE

# Audley Ellerslie

5 Southlands  
First/Second Floor Apartment  
Plot 17



## 3 bed first/second floor apartment

A converted Grade II\* listed duplex apartment with three bedrooms and beautiful period features. Set across first and second floor of Southlands, this very special home has superb, uninterrupted views of the Severn Valley and Worcestershire countryside. This unique home can be accessed via a lift or stairs.

Property specifications:

- Grade II listed duplex apartment with period features
- Stunning Severn Valley views
- Large open plan living/dining/kitchen with dual aspect views
- The master bedroom is on the lower floor with en suite walk-in shower room
- Second bedroom on upper level has space for a sitting area
- Good size third bedroom/study
- Separate upstairs Villeroy & Boch bathroom
- Separate W/C on lower floor

Audley Ellerslie  
Abbey Road, Malvern, Worcestershire WR14 3HL  
01684 438 400  
[www.audleyretirement.co.uk](http://www.audleyretirement.co.uk)