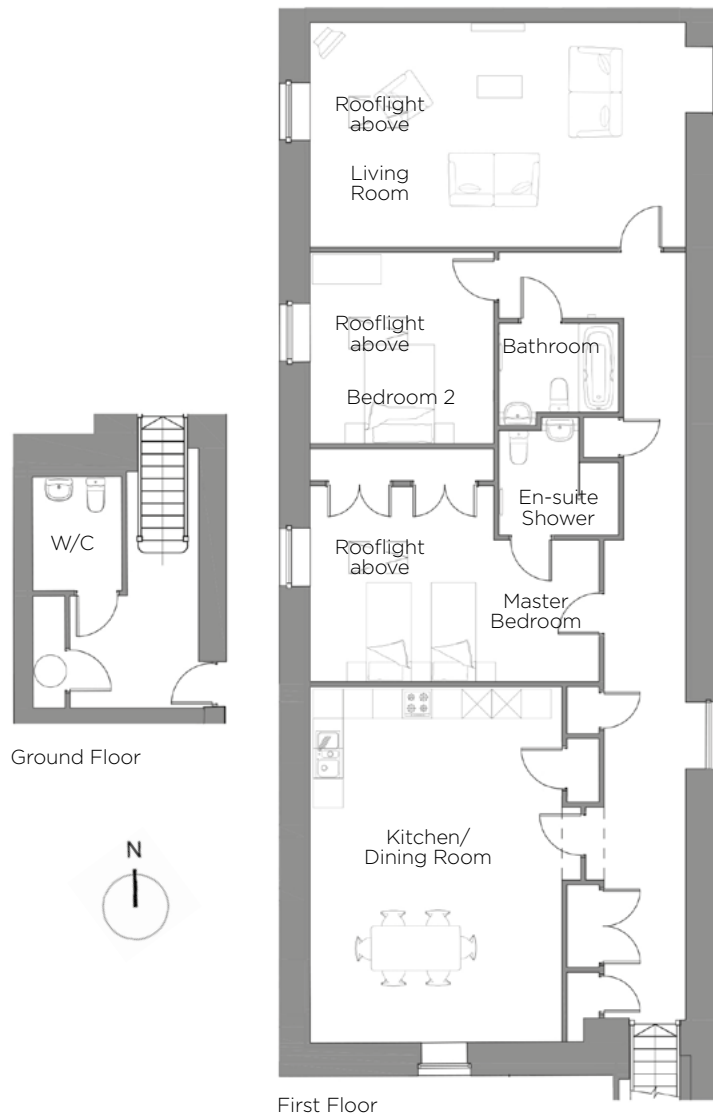


Audley Mote House

8 The Stables
Maisonette



Internal Measurements

Living Room
Kitchen/Dining Room
Master Bedroom
Bedroom 2

Metric (m)

7.58m x 4.55m
7.19m x 5.08m
3.96m x 3.71m
3.87m x 3.71m

Imperial (ft)

24'10" x 14'11"
23'7" x 16'8"
13'0" x 12'2"
12'8" x 12'2"



Audley Mote House
Mote Park, Nr Bearsted, Kent ME15 8NQ
01622 737 279
www.audleyretirement.co.uk

Built-in wardrobes in bedrooms and Ensuite Bathrooms where applicable have not been included in the overall dimensions. Maximum measurements shown. Doorway and window alcoves where applicable have not been included in the dimensions. These pages are intended for marketing purposes only. Designs vary according to plot and all details should be checked at the Sales Office. Plans subject to planning and building regulations approval.
January 2017

Audley Mote House

8 The Stables
Maisonette



Two bedroom apartment

A unique apartment situated within the eaves of the converted Grade II* listed Georgian stable block. This is the only apartment within this beautiful development and has its own private entrance with a downstairs W/C. With delightful character features and high sloping ceilings, the apartment has a very large kitchen/dining room with plenty of space for a dining table. There is a spacious living room and two double bedrooms.

Property specifications:

- Large 2 bedroom apartment
- Master bedroom with en-suite shower room and fitted wardrobes
- Second bedroom with adjacent bathroom
- Ground floor W/C
- Separate living room and kitchen/dining room

Audley Mote House
Mote Park, Nr Bearsted, Kent ME15 8NQ
01622 737 279
www.audleyretirement.co.uk