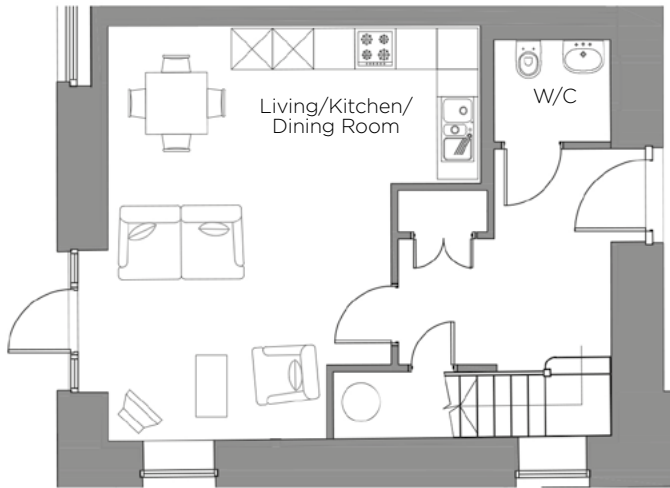
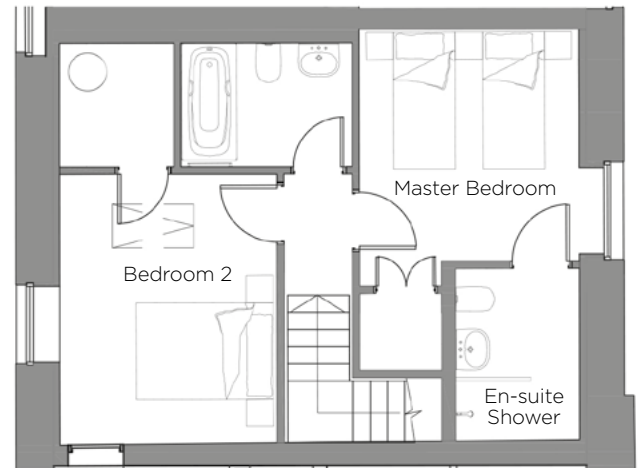


# Audley Mote House

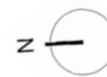
3 The Stables  
Cottage



Ground Floor



First Floor



Internal Measurements	Metric (m)	Imperial (ft)
Living/Kitchen/Dining Room	6.03m x 4.14m	19'9" x 13'7"
Master Bedroom	3.38m x 3.21m	11'1" x 10'6"
Bedroom 2	3.95m x 3.17m	12'11" x 10'5"



Audley Mote House  
Mote Park, Nr Bearsted, Kent ME15 8NQ  
01622 737 279  
[www.audleyretirement.co.uk](http://www.audleyretirement.co.uk)

Built-in wardrobes in bedrooms and Ensuite Bathrooms where applicable have not been included in the overall dimensions. Maximum measurements shown. Doorway and window alcoves where applicable have not been included in the dimensions. These pages are intended for marketing purposes only. Designs vary according to plot and all details should be checked at the Sales Office. Plans subject to planning and building regulations approval.  
January 2017

# Audley Mote House

3 The Stables  
Cottage



CGI for illustration purposes only



## Two bedroom cottage

Set within the Grade II\* listed Georgian stable block, this two bedroom cottage has a high-quality kitchen with SieMatic units and Corian worktops. The kitchen and dining room are open plan and have access to the courtyard through large French doors.

Property specifications:

- Open plan living area
- Master bedroom with fitted wardrobes and an en-suite shower room
- Second bedroom with a walk-in wardrobe
- Additional bathroom upstairs and ground floor W/C
- Large entrance hall with storage cupboard and cloakroom

Audley Mote House  
Mote Park, Nr Bearsted, Kent ME15 8NQ  
01622 737 279  
[www.audleyretirement.co.uk](http://www.audleyretirement.co.uk)

Photos for illustration purposes only



GOOD MOVE