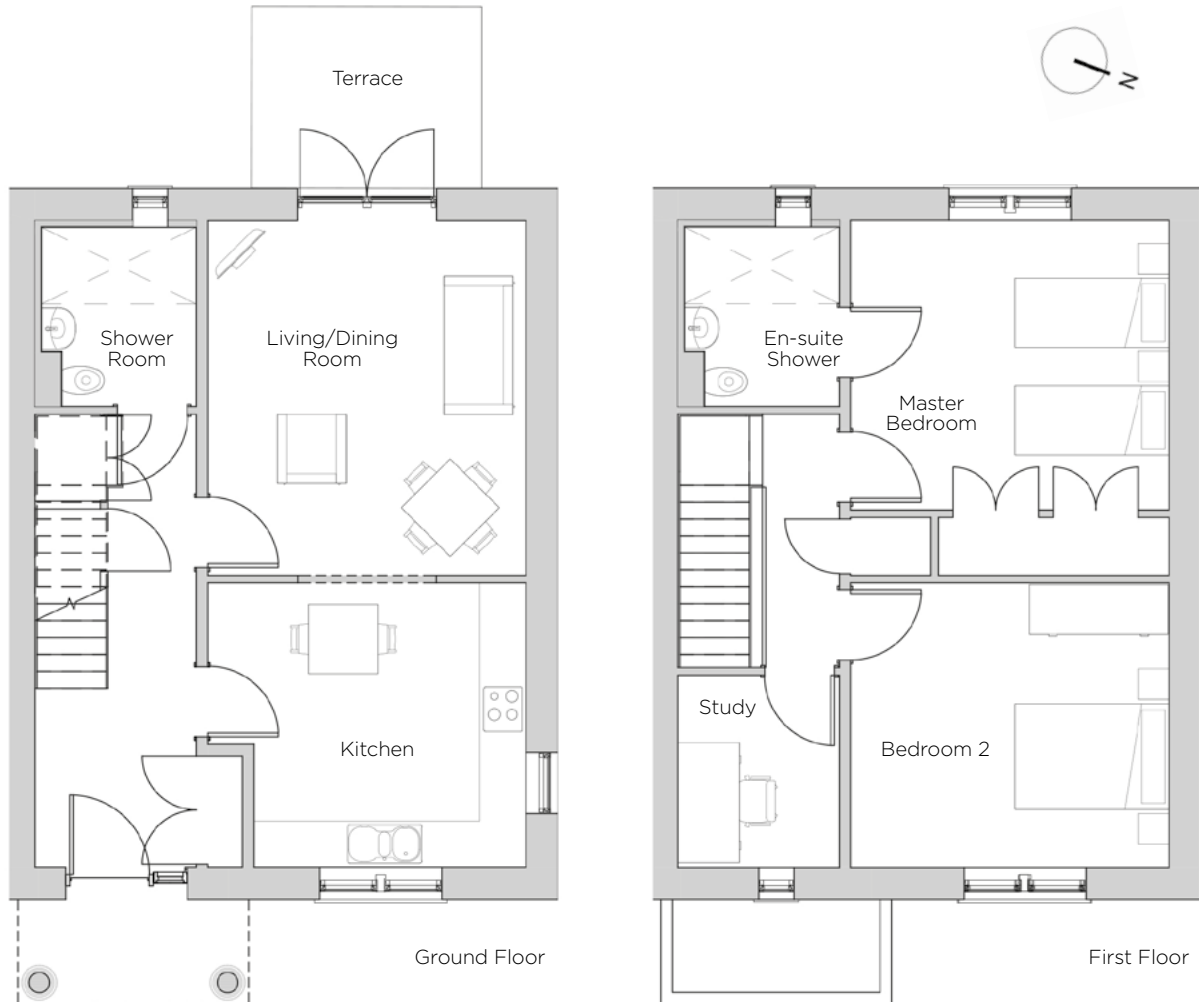


# Audley Redwood

6 Redwood Drive  
Cottage  
Plot 51



## Internal Measurements

## Metric (m)

## Imperial (ft)

Living/Dining Room	4.62m x 4.14m	15'2" x 13'7"
Kitchen	3.70m x 3.54m	12'2" x 11'7"
Master Bedroom	4.14m x 3.77m	13'7" x 12'4"
Bedroom 2	4.14m x 3.70m	13'7" x 12'2"
Study	2.50m x 2.10m	8'2" x 6'11"
Terrace (approx)	3.00m x 2.37m	9'10" x 7'9"

Audley Redwood  
Beggar Bush Lane, Failand, Bristol BS8 3TF  
01275 217 797  
[www.audleyretirement.co.uk](http://www.audleyretirement.co.uk)

Built-in wardrobes in bedrooms have not been included in the overall dimensions.  
Maximum measurements shown. These pages are intended for marketing purposes only.  
Designs vary according to plot and all details should be checked at the Sales Office.  
January 2017



GOOD MOVE

# Audley Redwood

6 Redwood Drive  
Cottage  
Plot 51



## 2 bedroom cottage with study

Beautifully located at the heart of the village, this special home benefits from stunning woodland views, as well as overlooking the beautiful central courtyard of Redwood Hall. Generously spaced with a good size entrance, private terrace and upstairs study.

Property specifications:

- Private terrace with views
- SieMatic kitchen with Corian worktops and breakfast table space
- Good size living/dining leading out onto the terrace
- Downstairs Villeroy & Boch shower room
- Master bedroom with double fitted wardrobes and an en-suite
- Large second double bedroom with courtyard views
- Good size upstairs study

Audley Redwood  
Beggar Bush Lane, Failand, Bristol BS8 3TF  
01275 217 797  
[www.audleyretirement.co.uk](http://www.audleyretirement.co.uk)



GOOD MOVE