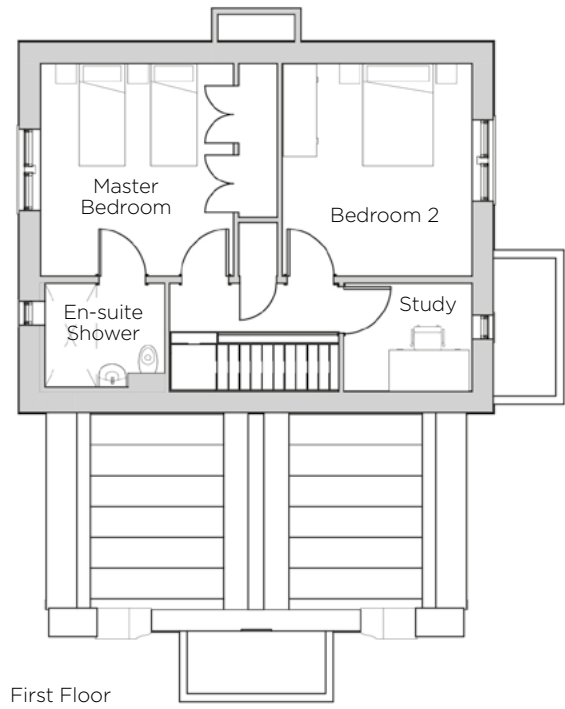
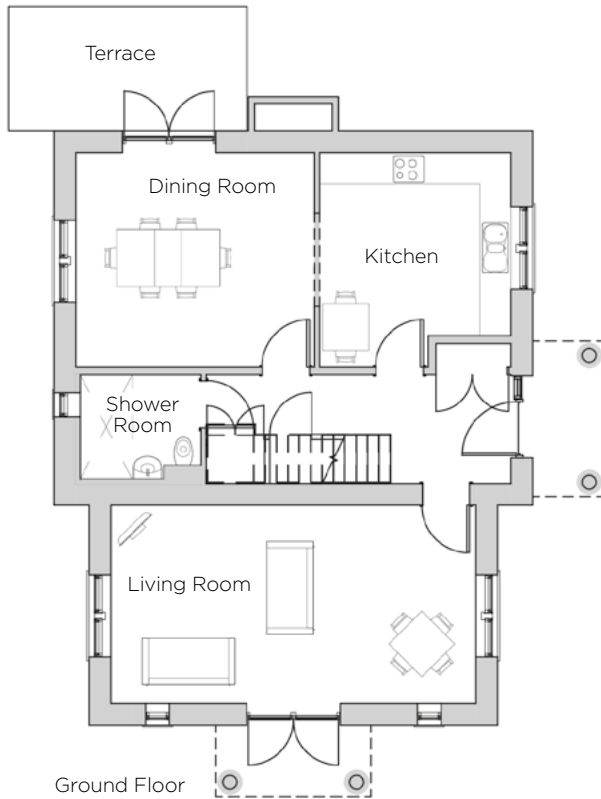


Audley Redwood

4 Redwood Drive
Cottage
Plot 56



Internal Measurements

Metric (m)

Imperial (ft)

Living Room	4.62m x 4.14m	15'2" x 13'7"
Kitchen	4.14m x 3.70m	13'7" x 12'2"
Master Bedroom	4.14m x 3.77m	13'7" x 12'4"
Bedroom 2	4.14m x 3.70m	13'7" x 12'2"
Study	2.50m x 2.10m	8'2" x 6'11"
Terrace (approx)	4.62m x 2.40m	15'2" x 7'10"

Audley Redwood
Beggars Bush Lane, Failand, Bristol BS8 3TF
01275 217 797
www.audleyretirement.co.uk



Built-in wardrobes in bedrooms have not been included in the overall dimensions.
Maximum measurements shown. These pages are intended for marketing purposes only.
Designs vary according to plot and all details should be checked at the Sales Office.
January 2017



GOOD MOVE

Audley Redwood

4 Redwood Drive
Cottage
Plot 56



2 bedroom cottage with study

This is Audley Redwood's largest detached cottage with two spacious bedrooms, a separate study, two shower rooms and a private south-facing terrace. Downstairs the home has a large living room with patio doors, a SieMatic kitchen, a separate dining room that leads out onto the terrace and a separate shower room. Upstairs there is a spacious master bedroom with en-suite shower, double second bedroom and separate study.

Property specifications:

- SieMatic kitchen with integrated appliances including microwave and dishwasher
- Spacious living room with patio doors
- Separate dining room leading out onto private terrace
- Downstairs Villeroy & Boch shower room
- Master bedroom has fitted wardrobes and en-suite walk-in shower
- Large second double bedroom

Audley Redwood
Beggars Bush Lane, Failand, Bristol BS8 3TF
01275 217 797
www.audleyretirement.co.uk



GOOD MOVE