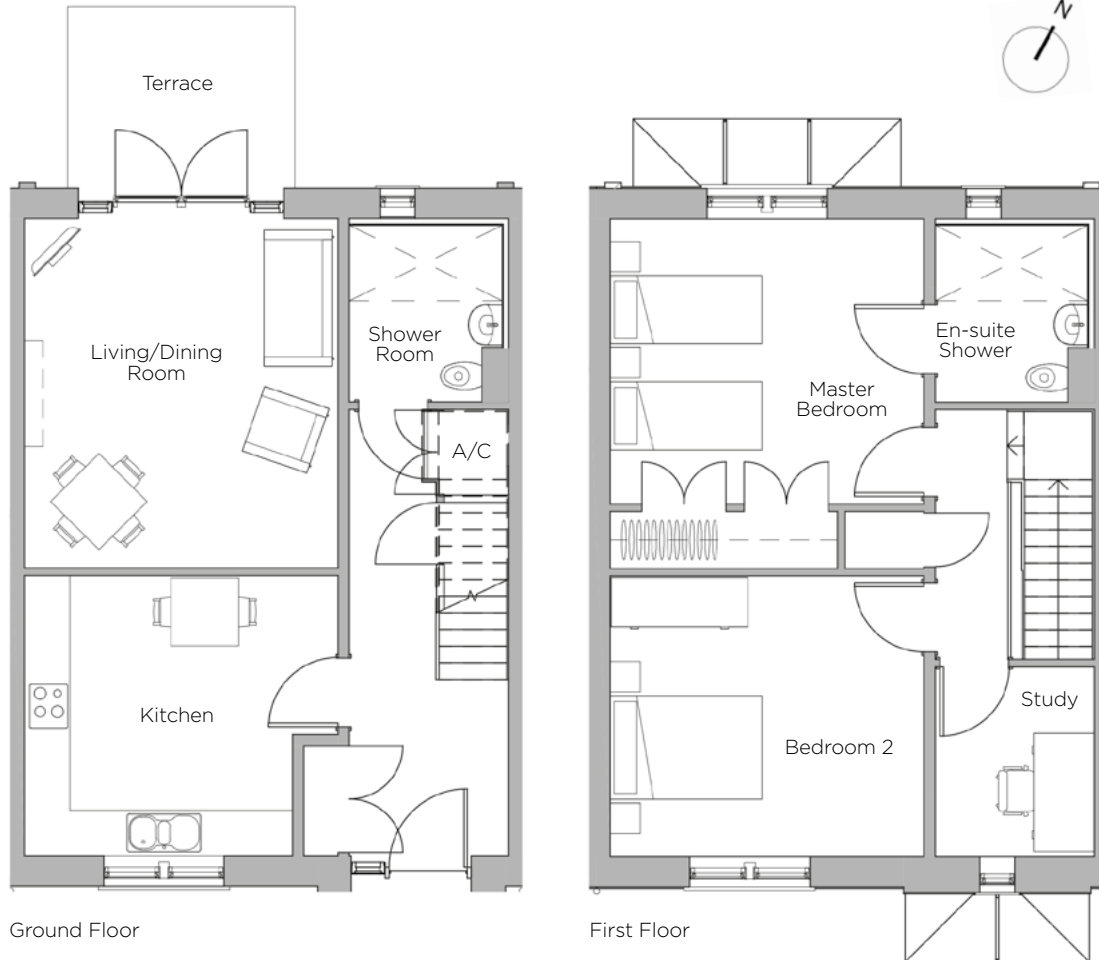


Audley Redwood

13 Redwood Drive
Cottage
Plot 15



Internal Measurements

Metric (m)

Imperial (ft)

Living/Dining Room	4.62m x 4.14m	15'2" x 13'7"
Kitchen	4.14m x 3.70m	13'7" x 12'2"
Master Bedroom	4.14m x 3.77m	13'7" x 12'4"
Bedroom 2	4.14m x 3.70m	13'7" x 12'2"
Study	2.50m x 2.10m	8'2" x 6'11"
Terrace (approx)	3.00m x 2.40m	9'10" x 7'10"

Audley Redwood
Beggar Bush Lane, Failand, Bristol BS8 3TF
01275 217 797
www.audleyretirement.co.uk

Built-in wardrobes in bedrooms have not been included in the overall dimensions.
Maximum measurements shown. These pages are intended for marketing purposes only.
Designs vary according to plot and all details should be checked at the Sales Office.
January 2017



GOOD MOVE

Audley Redwood

13 Redwood Drive
Cottage
Plot 15



2 bedroom cottage with study

This two bedroom cottage is set across two floors with woodland views. The ground floor comprises a spacious living/dining room with patio doors leading out onto a private terrace. Upstairs benefits from a master bedroom with en-suite shower room, a large second bedroom and a south-facing study.

Property specifications:

- Ground floor private terrace with woodland views
- Large kitchen with space for a breakfast table
- Well proportioned living/dining area
- Downstairs shower room
- Large master bedroom with fitted wardrobe and en-suite
- Spacious second double bedroom
- Separate study

Audley Redwood
Beggar Bush Lane, Failand, Bristol BS8 3TF
01275 217 797
www.audleyretirement.co.uk