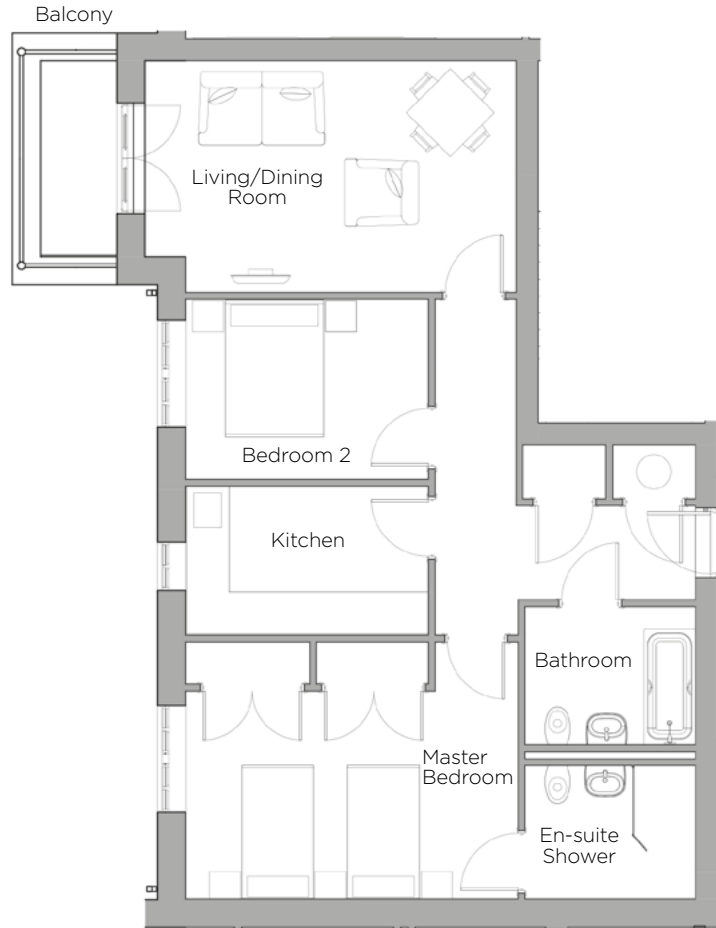
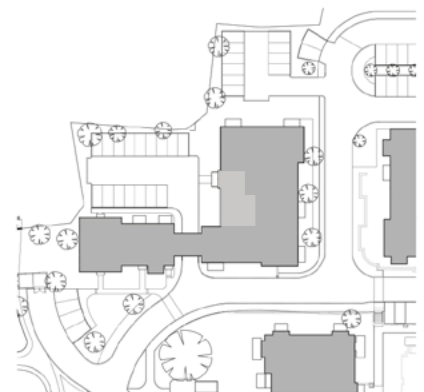


# Audley St Elphin's Park

7 Pollard Way  
 First Floor Apartment  
 Plot 135



Internal Measurements	Metric (m)	Imperial (ft)
Living/Dining Room	5.38m x 3.35m	17'8" x 11'0"
Kitchen	3.51m x 2.16m	11'6" x 7'1"
Master Bedroom	4.81m x 3.09m	15'9" x 10'2"
Bedroom 2	3.51m x 2.61m	11'6" x 8'7"
Balcony (approx)	2.84m x 1.11m	9'4" x 3'8"



Audley St Elphin's Park  
 St Elphin's Park, Dale Road South, Darley Dale, Matlock DE4 2RH  
 01629 733 337 [stelphinssales@audleyretirement.co.uk](mailto:stelphinssales@audleyretirement.co.uk)  
[www.audleyretirement.co.uk](http://www.audleyretirement.co.uk)

Built-in wardrobes in bedrooms have not been included in the overall dimensions.  
 Maximum measurements shown. These pages are intended for marketing purposes only.  
 Designs vary according to plot and all details should be checked at the Sales Office.  
 January 2017



GOOD MOVE

# Audley St Elphin's Park

7 Pollard Way  
First Floor Apartment  
Plot 135



## 2 bedroom first floor apartment

This first floor north-east facing apartment has a private balcony that enjoys the stunning views of the rolling hills and fields on the edge of the village. Within easy access of St Elphin's House, the Audley Club facilities, including swimming pool, restaurant, bar and library, can be enjoyed any day of the week.

Property specifications:

- Private balcony with beautiful countryside views
- Light and airy living/dining room opens out onto private terrace
- Spacious master bedroom with large fitted wardrobes and a walk-in shower en-suite
- Siematic kitchen with integrated appliances
- Villeroy & Boch second bathroom
- Second bedroom enjoys stunning views

Audley St Elphin's Park  
St Elphin's Park, Dale Road South, Darley Dale, Matlock DE4 2RH  
01629 733 337 [stelphinsales@audleyretirement.co.uk](mailto:stelphinsales@audleyretirement.co.uk)  
[www.audleyretirement.co.uk](http://www.audleyretirement.co.uk)



GOOD MOVE