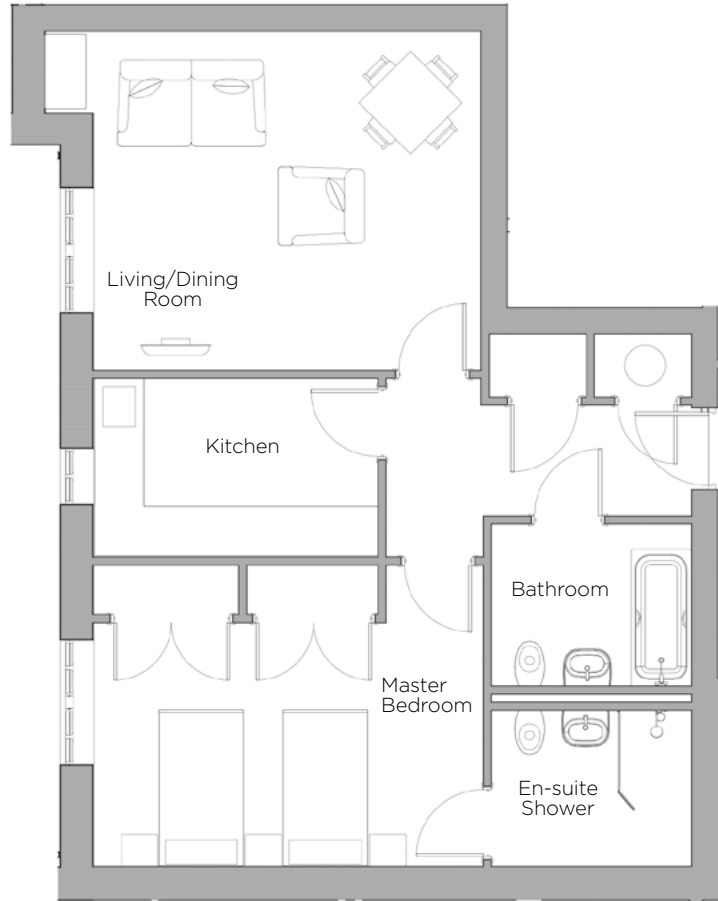
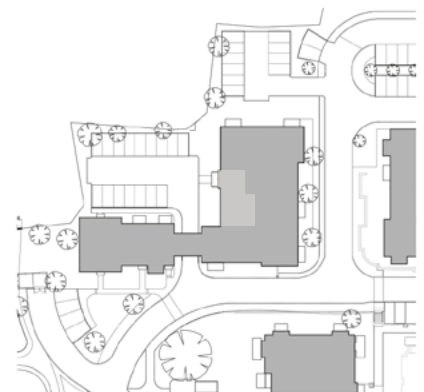


# Audley St Elphin's Park

1 Pollard Way  
Ground Floor Apartment  
Plot 129



Internal Measurements	Metric (m)	Imperial (ft)
Living/Dining Room	4.78m x 4.19m	15'8" x 13'9"
Kitchen	3.51m x 2.21m	11'6" x 7'3"
Master Bedroom	4.81m x 3.09m	15'9" x 10'2"



Audley St Elphin's Park  
St Elphin's Park, Dale Road South, Darley Dale, Matlock DE4 2RH  
01629 733 337 [stelphinssales@audleyretirement.co.uk](mailto:stelphinssales@audleyretirement.co.uk)  
[www.audleyretirement.co.uk](http://www.audleyretirement.co.uk)

Built-in wardrobes in bedrooms have not been included in the overall dimensions.  
Maximum measurements shown. These pages are intended for marketing purposes only.  
Designs vary according to plot and all details should be checked at the Sales Office.  
January 2017



GOOD MOVE

# Audley St Elphin's Park

1 Pollard Way  
Ground Floor Apartment  
Plot 129



## 1 bed ground floor apartment

This one bedroom apartment is perfectly located in Pollard Way, on the edge of St Elphin's Park with beautiful countryside views. Each room is spacious and benefits from good storage, luxury bathrooms and ground floor access.

Property specifications:

- Spacious living/dining room
- SieMatic kitchen with Corian worktops and integrated appliances
- Master bedroom has a shower en-suite and a double fitted wardrobe
- Luxury Villeroy & Boch second bathroom
- Excellent storage

Audley St Elphin's Park  
St Elphin's Park, Dale Road South, Darley Dale, Matlock DE4 2RH  
01629 733 337 [stelphinsales@audleyretirement.co.uk](mailto:stelphinsales@audleyretirement.co.uk)  
[www.audleyretirement.co.uk](http://www.audleyretirement.co.uk)



GOOD MOVE