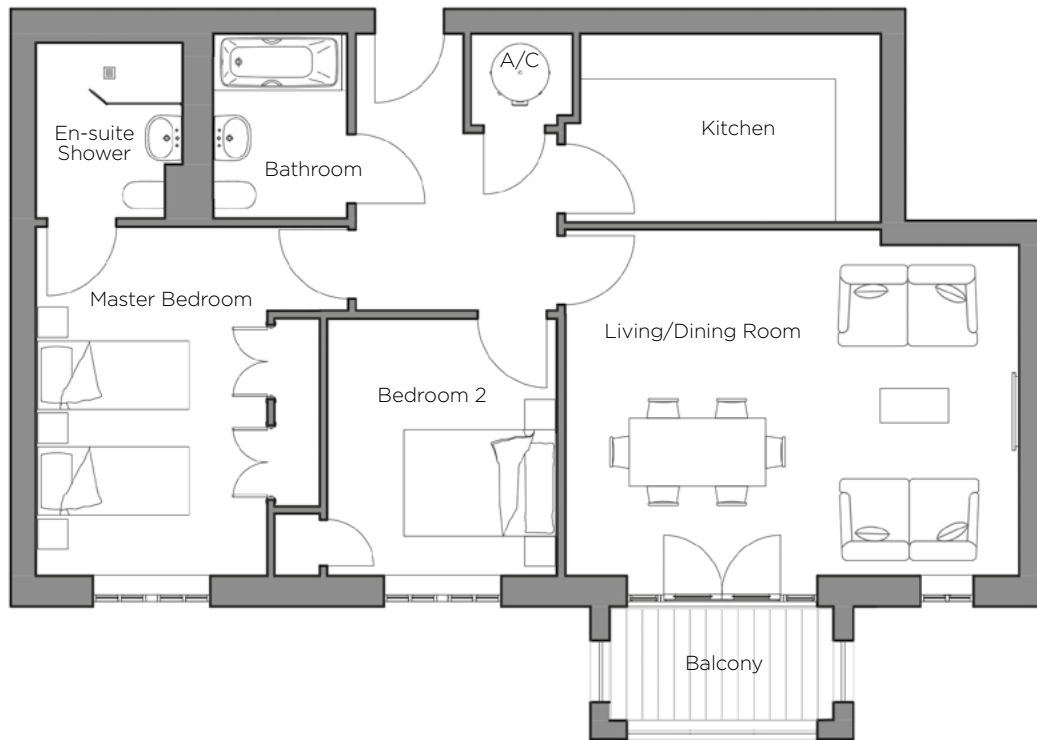


Audley St Elphin's Park

17 Devonshire Court
 First Floor Apartment
 Plot 72



Internal Measurements	Metric (m)	Imperial (ft)
Living/Dining Room	5.99m x 4.57m	19'8" x 15'0"
Kitchen	3.97m x 2.49m	13'0" x 8'2"
Master Bedroom	4.61m x 3.06m	15'1" x 10'0"
Bedroom 2	3.39m x 3.03m	11'2" x 9'11"
Balcony (approx)	3.00m x 1.51m	9'10" x 4'11"



Audley St Elphin's Park
 St Elphin's Park, Dale Road South, Darley Dale, Matlock DE4 2RH
 01629 733 337 stelphinssales@audleyretirement.co.uk
www.audleyretirement.co.uk

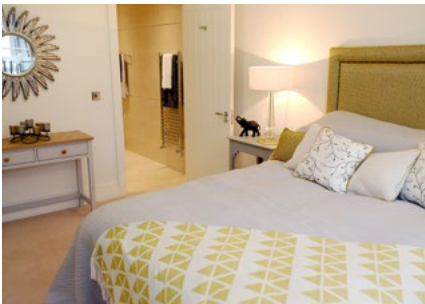
Built-in wardrobes in bedrooms have not been included in the overall dimensions.
 Maximum measurements shown. These pages are intended for marketing purposes only.
 Designs vary according to plot and all details should be checked at the Sales Office.
 January 2017



GOOD MOVE

Audley St Elphin's Park

17 Devonshire Court
First Floor Apartment
Plot 72



2 bedroom first floor apartment

17 Devonshire Court is located just minutes from St Elphin's House with all the superb facilities on offer, including gymnasium, swimming pool, treatment rooms and bistro. This spacious first floor two bedroom apartment has a large living/dining room with double doors leading out onto a private south-west facing balcony.

Property specifications:

- Private south-west facing balcony
- Spacious living/dining room leads out onto balcony
- Luxury kitchen with integrated appliances and Corian worktops
- Master bedroom with walk-in shower en-suite and fitted wardrobes
- Luxury Villeroy & Boch second bathroom
- Second double bedroom
- Stairs and lift accessible

Audley St Elphin's Park
St Elphin's Park, Dale Road South, Darley Dale, Matlock DE4 2RH
01629 733 337 stelphinsales@audleyretirement.co.uk
www.audleyretirement.co.uk