

Audley St George's Place

5 Middlemore Hall (A05)
First Floor Apartment

Drawing Legend:

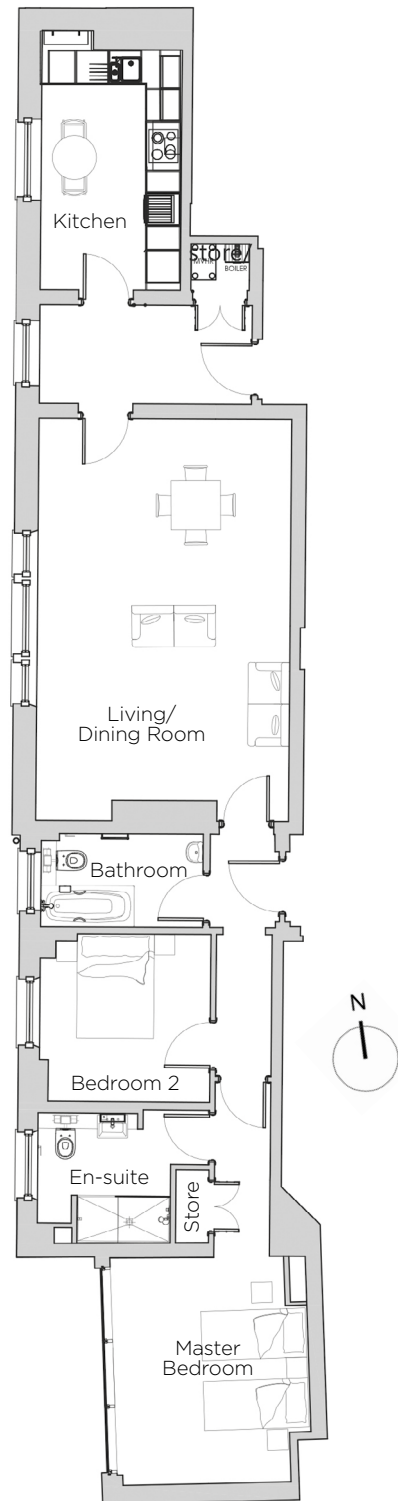
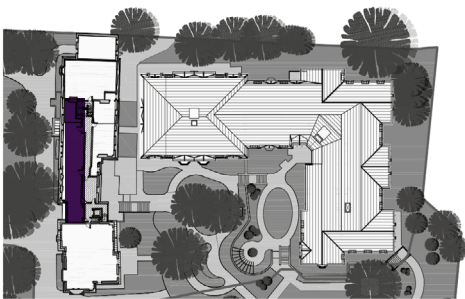


Boiler



MVHR

Reduced
ceiling
height



Internal Measurements	Metric (m)	Imperial (ft)
Living/Dining Room	7.33m x 4.59m	24'04" x 15'05"
Kitchen	4.73m x 2.55m	15'51" x 8'36"
Master Bedroom	4.11m x 3.55m	13'48" x 11'64"
Bedroom 2	3.05m x 2.94m	10'0" x 9'64"
Total Apartment Area	105m ²	1130ft ²

Audley St George's Place
2 Church Road, Edgbaston, West Midlands B15 3SH
0121 454 5270
www.audleyretirement.co.uk

Built-in wardrobes in bedrooms have not been included in the overall dimensions.
Maximum measurements shown. These pages are intended for marketing purposes only.
Designs vary according to plot and all details should be checked at the Sales Office.
January 2017



GOOD MOVE

Audley St George's Place

5 Middlemore Hall (A05)
First Floor Apartment



2 bedroom first floor apartment

This beautiful restored apartment is entirely west-facing and has delightful windows that are in-keeping with its Georgian style. It has a very spacious living/dining room with a large window that makes it the perfect room to relax and unwind in.



Property specifications:

- Luxury kitchen with space for a breakfast table
- A large living/dining room with real character
- Master bedroom has a full window wall and en-suite bathroom
- Separate Villeroy & Boch shower room
- West-facing second bedroom



Audley St George's Place
2 Church Road, Edgbaston, West Midlands B15 3SH
0121 454 5270
www.audleyretirement.co.uk

Photos for illustration purposes only