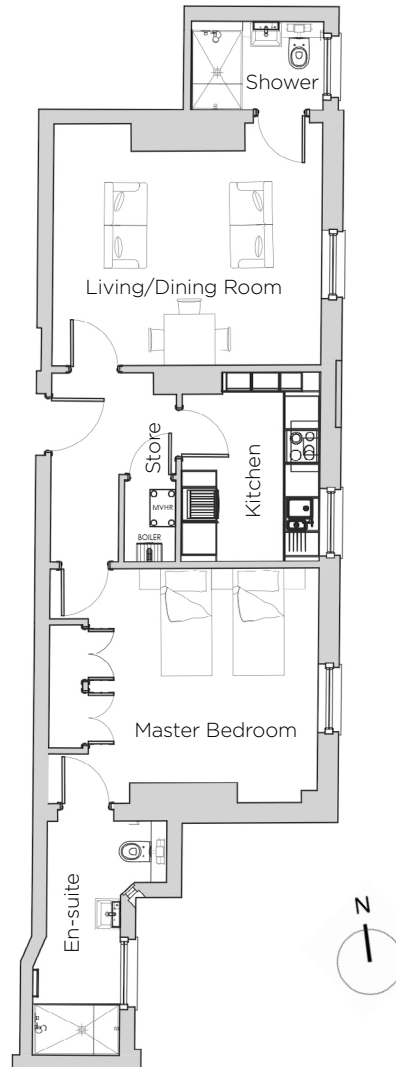


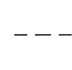


Audley St George's Place

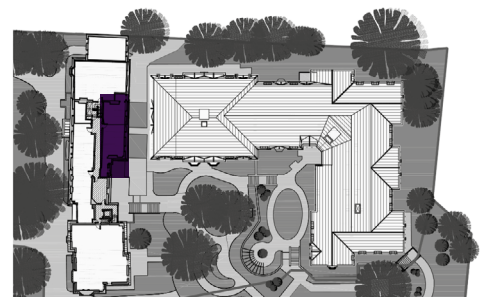
4 Middlemore Hall (A04)
First Floor Apartment



Drawing Legend:

-  Boiler
-  MVHR
-  Reduced ceiling height

Internal Measurements	Metric (m)	Imperial (ft)
Living/Dining Room	4.74m x 4.27m	15'6" x 14'0"
Kitchen	3.34m x 2.44m	10'11" x 8'0"
Master Bedroom	4.73m x 4.15m	15'6" x 13'7"
Total Apartment Area	67m²	721ft²



Audley St George's Place
2 Church Road, Edgbaston, West Midlands B15 3SH
0121 454 5270
www.audleyretirement.co.uk

Built-in wardrobes in bedrooms have not been included in the overall dimensions.
Maximum measurements shown. These pages are intended for marketing purposes only.
Designs vary according to plot and all details should be checked at the Sales Office.
January 2017

Audley St George's Place

4 Middlemore Hall (A04)
First Floor Apartment



1 bedroom first floor apartment

This newly converted one bedroom apartment is set in the characterful Grade II listed Georgian Middlemore Hall. It is just moments away from the superb amenities of St George's House with its health club, bar and restaurant.

Property specifications:

- Spacious living/dining room with east-facing window
- Master bedroom with fitted wardrobes and an en-suite shower room
- Luxury SieMatic Kitchen with Corian worktops
- Separate Villeroy & Boch shower room

Audley St George's Place
2 Church Road, Edgbaston, West Midlands B15 3SH
0121 454 5270
www.audleyretirement.co.uk

Photos for illustration purposes only



GOOD MOVE