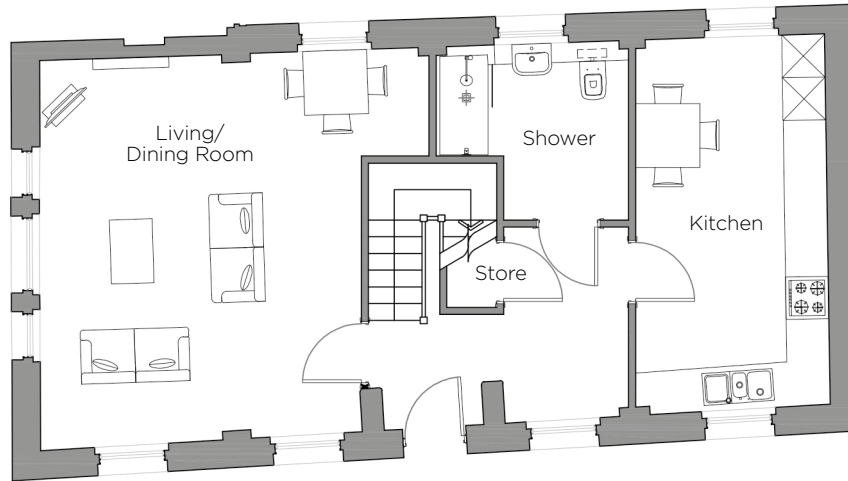
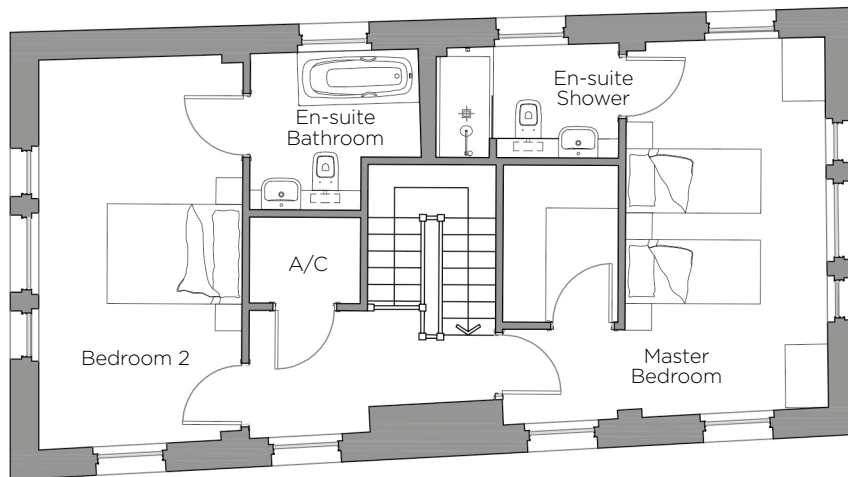


# Audley St George's Place

Gough Cottage  
Detached Cottage



Ground Floor



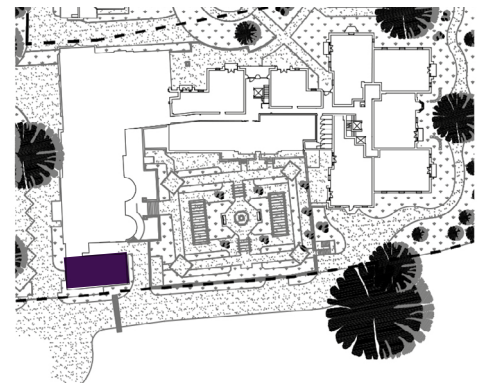
First Floor



Internal Measurements	Metric (m)	Imperial (ft)
Living/Dining Room	5.67m x 5.46m	18'7" x 17'11"
Kitchen	5.36m x 2.65m	17'7" x 8'8"
Master Bedroom	5.37m x 4.56m	17'7" x 14'11"
Bedroom 2	5.56m x 2.87m	18'2" x 9'5"

Apartment Sqft 1,273

Audley St George's Place  
2 Church Road, Edgbaston, West Midlands B15 3SH  
0121 454 5270  
[www.audleyretirement.co.uk](http://www.audleyretirement.co.uk)



Built-in wardrobes in bedrooms have not been included in the overall dimensions.  
Maximum measurements shown. These pages are intended for marketing purposes only.  
Designs vary according to plot and all details should be checked at the Sales Office.  
January 2017



GOOD MOVE

# Audley St George's Place

Gough Cottage  
Detached Cottage



CGI for illustration purposes only

## 2 bedroom detached cottage

One of the most unique properties in the village, this renovated Grade II listed detached cottage is located adjacent to the magnificent St George's House with its health club, restaurant, bar and bistro.

Property specifications:

- Two large double bedrooms both with en-suite bathrooms
- A spacious living room with space for a dining table
- Additional downstairs shower room with W/C
- Luxury kitchen with ample space for a breakfast table



Photos for illustration purposes only

Audley St George's Place  
2 Church Road, Edgbaston, West Midlands B15 3SH  
0121 454 5270  
[www.audleyretirement.co.uk](http://www.audleyretirement.co.uk)



GOOD MOVE