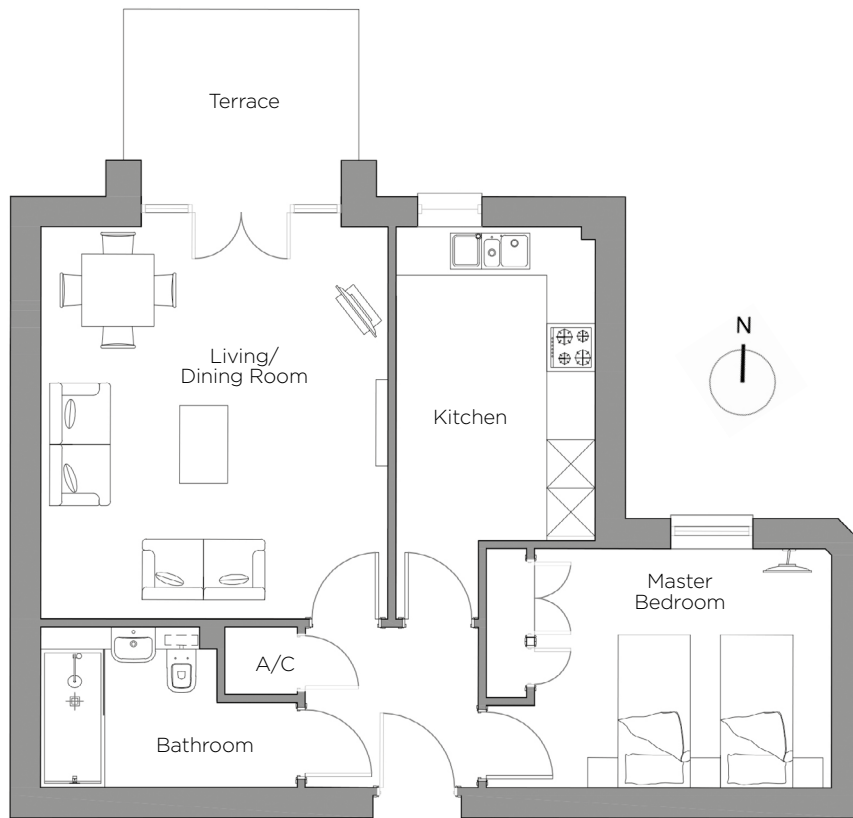


Audley St George's Place

2 Gabriel Place (F01)
Ground Floor Apartment

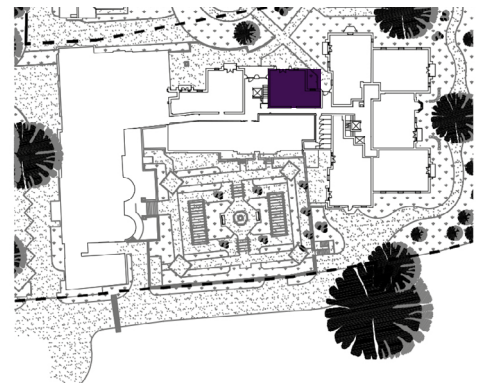


Internal Measurements	Metric (m)	Imperial (ft)
Living/Dining Room	4.87m x 4.32m	15'11" x 14'2"
Kitchen	4.87m x 2.47m	15'11" x 8'1"
Master Bedroom	4.29m x 3.00m	14'0" x 9'10"

Apartment Sqft 609

Audley St George's Place
2 Church Road, Edgbaston, West Midlands B15 3SH
0121 454 5270
www.audleyretirement.co.uk

Built-in wardrobes in bedrooms have not been included in the overall dimensions.
Maximum measurements shown. These pages are intended for marketing purposes only.
Designs vary according to plot and all details should be checked at the Sales Office.
January 2017



GOOD MOVE

Audley St George's Place

2 Gabriel Place (F01)
Ground Floor Apartment



1 bedroom ground floor apartment

A charming one bedroom apartment within the new-build Gabriel Court, with a private terrace looking over landscaped grounds leading from the spacious living/dining room.

Property specifications:

- Double bedroom with fitted wardrobes
- Wet room with level access shower
- Living room with French doors leading onto a private terrace
- Fully fitted SieMatic kitchen with Corian worktops

Audley St George's Place
2 Church Road, Edgbaston, West Midlands B15 3SH
0121 454 5270
www.audleyretirement.co.uk

Photos for illustration purposes only