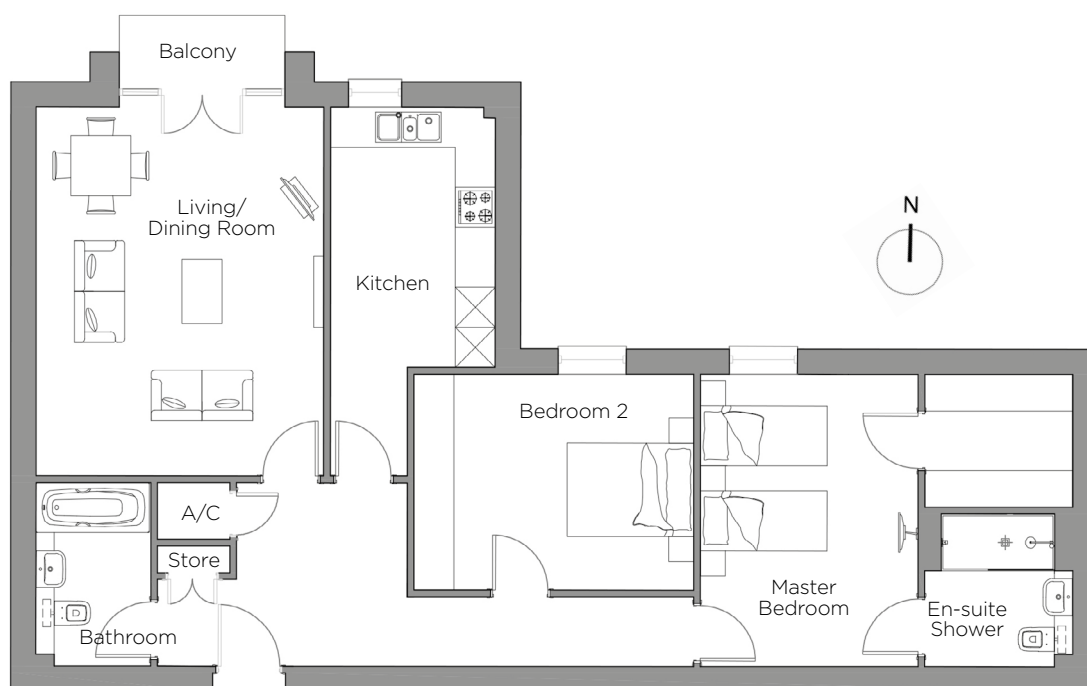


# Audley St George's Place

12 Gabriel Place (F11)  
Third Floor Apartment

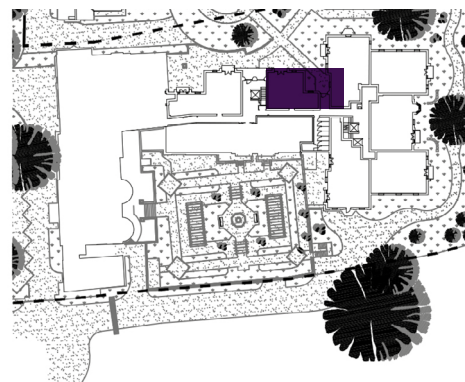


Internal Measurements	Metric (m)	Imperial (ft)
Living/Dining Room	5.53m x 4.32m	18'1" x 14'2"
Kitchen	5.53m x 2.47m	18'1" x 8'1"
Master Bedroom	4.38m x 3.27m	14'4" x 10'8"
Bedroom 2	4.20m x 3.24m	13'9" x 10'7"

Apartment Sqft 1,001

Audley St George's Place  
2 Church Road, Edgbaston, West Midlands B15 3SH  
0121 454 5270  
[www.audleyretirement.co.uk](http://www.audleyretirement.co.uk)

Built-in wardrobes in bedrooms have not been included in the overall dimensions.  
Maximum measurements shown. These pages are intended for marketing purposes only.  
Designs vary according to plot and all details should be checked at the Sales Office.  
January 2017



GOOD MOVE

# Audley St George's Place

12 Gabriel Place (F11)  
Third Floor Apartment



## 2 bedroom third floor apartment

A two double bedroom apartment with luxurious features such as a walk in wardrobe, en-suite shower room and separate bathroom, SieMatic kitchen and a private balcony with views over the landscaped grounds of the village.

Property specifications:

- High quality kitchen with Corian worktops and integrated appliances
- Private balcony
- Spacious living/dining room
- Master bedroom with walk in wardrobes
- En-suite shower room plus separate bathroom



Audley St George's Place  
2 Church Road, Edgbaston, West Midlands B15 3SH  
0121 454 5270  
[www.audleyretirement.co.uk](http://www.audleyretirement.co.uk)

Photos for illustration purposes only



GOOD MOVE