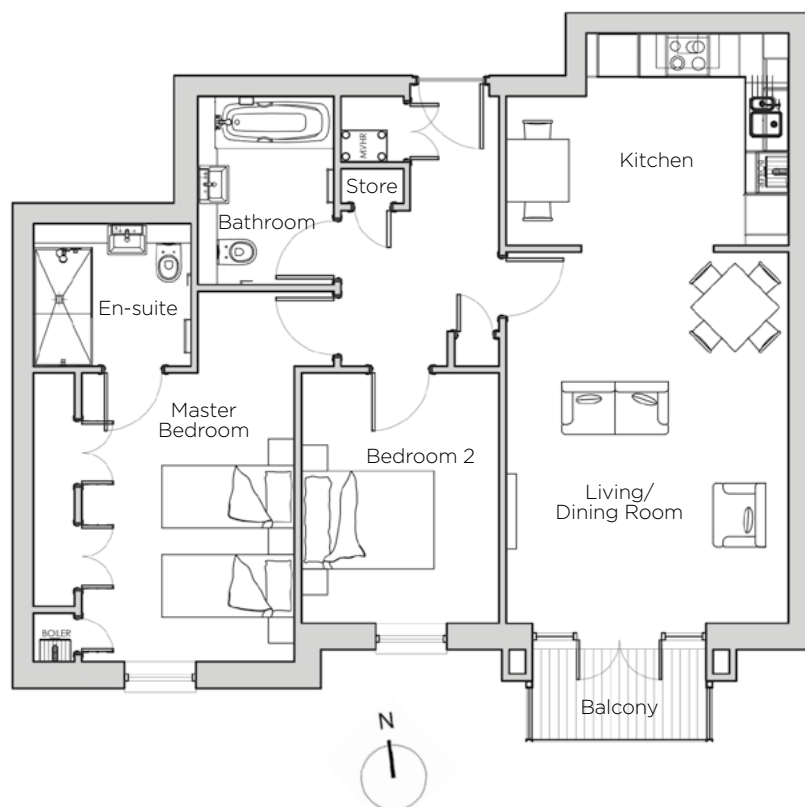
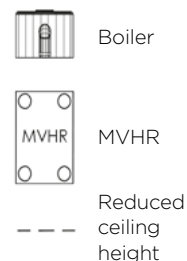


Audley St George's Place

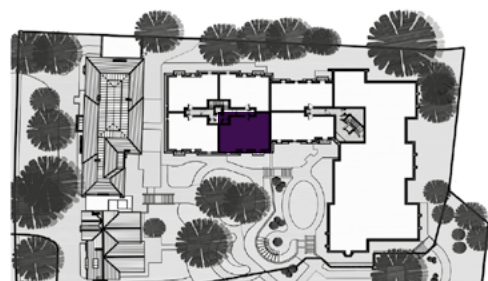
8 Chamberlain Place (E24)
First Floor Apartment



Drawing Legend:



Internal Measurements	Metric (m)	Imperial (ft)
Living/Dining Room	5.31m x 4.06m	17'5" x 13'3"
Kitchen	4.05m x 3.04m	13'3" x 9'11"
Master Bedroom	5.31m x 3.75m	17'5" x 12'3"
Bedroom 2	3.59m x 2.83m	11'9" x 9'3"
Total Apartment Area	82.8m²	891ft²



Audley St George's Place
2 Church Road, Edgbaston, West Midlands B15 3SH
0121 454 5270
www.audleyretirement.co.uk

Built-in wardrobes in bedrooms have not been included in the overall dimensions.
Maximum measurements shown. These pages are intended for marketing purposes only.
Designs vary according to plot and all details should be checked at the Sales Office.
January 2017

Audley St George's Place

8 Chamberlain Place (E24)
First Floor Apartment



2 bedroom first floor apartment

This south-facing apartment has ample natural light with a private balcony overlooking the heart of St George's Place retirement village.

Property specifications:

- Fully fitted SieMatic kitchen with integrated appliances and space for breakfast table
- Master bedroom with large fitted wardrobes across one wall
- Both bedrooms have south-facing views
- En-suite shower room plus separate bathroom
- Timber-decked private balcony



Audley St George's Place
2 Church Road, Edgbaston, West Midlands B15 3SH
0121 454 5270
www.audleyretirement.co.uk

Photos for illustration purposes only



GOOD MOVE