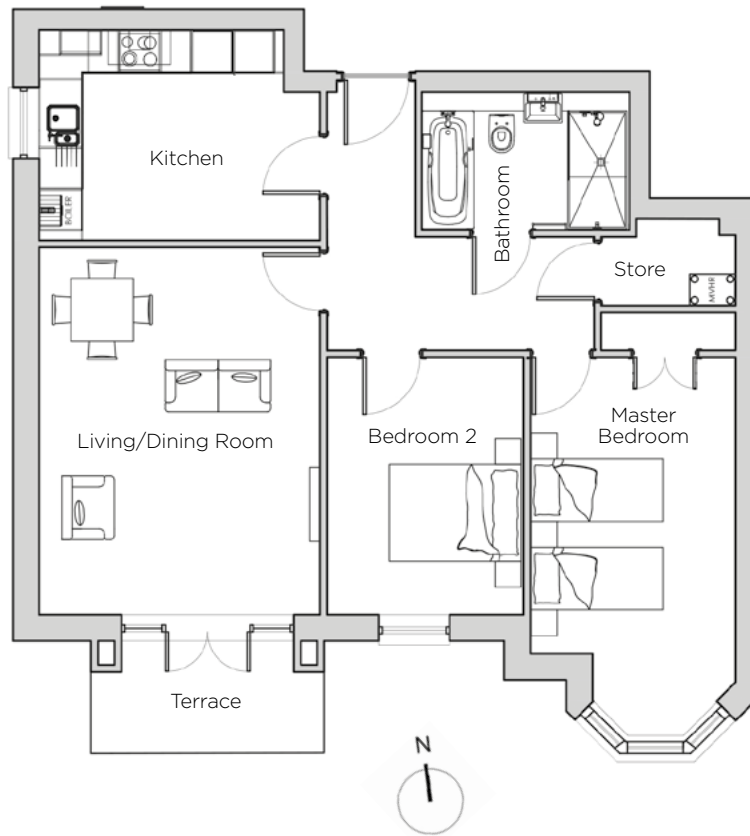


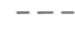


# Audley St George's Place

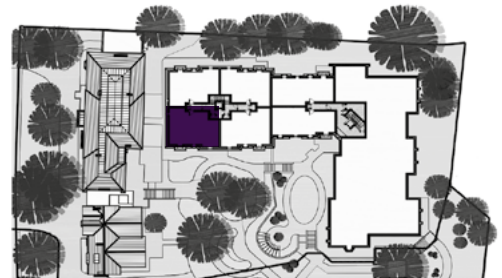
1 Chamberlain Place (E11)  
Ground Floor Apartment



**Drawing Legend:**

-  Boiler
-  MVHR
-  Reduced ceiling height

Internal Measurements	Metric (m)	Imperial (ft)
Living/Dining Room	5.31m x 4.05m	17'5" x 13'3"
Kitchen	4.05m x 3.04m	13'3" x 9'11"
Master Bedroom	6.10m x 2.96m	20'0" x 9'8"
Bedroom 2	3.72m x 2.84m	12'2" x 9'3"
<b>Total Apartment Area</b>	<b>80.4m<sup>2</sup></b>	<b>865ft<sup>2</sup></b>



Audley St George's Place  
2 Church Road, Edgbaston, West Midlands B15 3SH  
0121 454 5270  
[www.audleyretirement.co.uk](http://www.audleyretirement.co.uk)

Built-in wardrobes in bedrooms have not been included in the overall dimensions.  
Maximum measurements shown. These pages are intended for marketing purposes only.  
Designs vary according to plot and all details should be checked at the Sales Office.  
January 2017

# Audley St George's Place

1 Chamberlain Place (E11)  
Ground Floor Apartment



CGI for illustration purposes only



Photos for illustration purposes only

## 2 bedroom ground floor apartment

A two double bedroom apartment with an attractive bay window and a private, south-facing terrace overlooking the landscaped courtyard at the centre of the village.

Property specifications:

- Spacious master bedroom with bay window and fitted wardrobes
- Second double bedroom
- Luxury Villeroy & Boch bathroom with separate shower and bath
- South facing private terrace from living/dining room
- SieMatic kitchen with integrated appliances and west facing window

Audley St George's Place  
2 Church Road, Edgbaston, West Midlands B15 3SH  
0121 454 5270  
[www.audleyretirement.co.uk](http://www.audleyretirement.co.uk)



GOOD MOVE