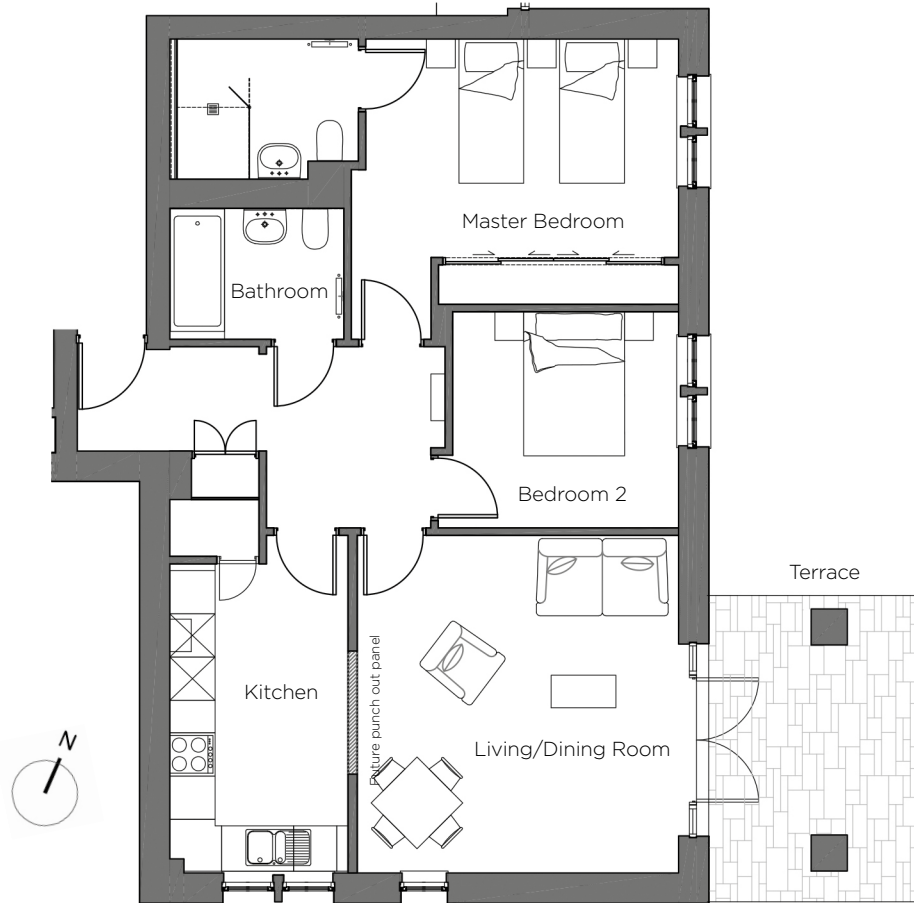
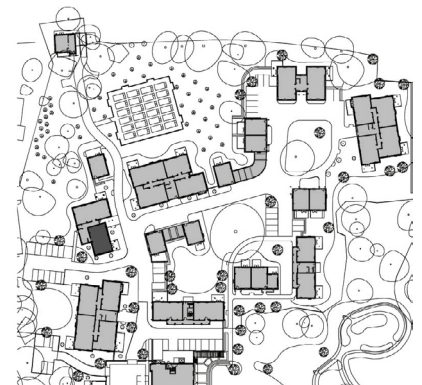


# Audley Chalfont Dene

1 Gower Court (J40)  
Ground Floor Apartment



Internal Measurements	Metric (m)	Imperial (ft)
Living Room	4.69m x 4.47m	15'4" x 14'8"
Kitchen	4.27m x 2.48m	14'0" x 8'1"
Master Bedroom	4.35m x 3.03m	14'3" x 9'11"
Bedroom 2	3.14m x 3.00m	10'4" x 9'10"
Terrace (approx)	4.25m x 3.00m	13'11" x 9'10"



Audley Chalfont Dene  
Rickmansworth Lane, Chalfont St Peter, Buckinghamshire SL9 0LX  
01494 876 173  
[www.audleyretirement.co.uk](http://www.audleyretirement.co.uk)

Built-in wardrobes in bedrooms have not been included in the overall dimensions.  
Maximum measurements shown. These pages are intended for marketing purposes only.  
Designs vary according to plot and all details should be checked at the Sales Office.  
January 2017



GOOD MOVE

# Audley Chalfont Dene

1 Gower Court (J40)  
Ground Floor Apartment



## 2 bed ground floor apartment

This two bedroom ground floor apartment is situated within a charming new build block of just five apartments. 1 Gower Court has a private terrace leading out from the living/dining room.

Property specifications:

- Master bedroom with fitted wardrobes and en-suite shower
- Hallway with storage cupboard
- Living room with French doors leading onto a terrace
- Fully fitted SieMatic kitchen with Corian worktops

£665,000 (other fees apply)

Audley Chalfont Dene  
Rickmansworth Lane, Chalfont St Peter, Buckinghamshire SL9 0LX  
01494 876 173  
[www.audleyretirement.co.uk](http://www.audleyretirement.co.uk)

Photos for illustration purposes only



GOOD MOVE