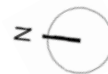
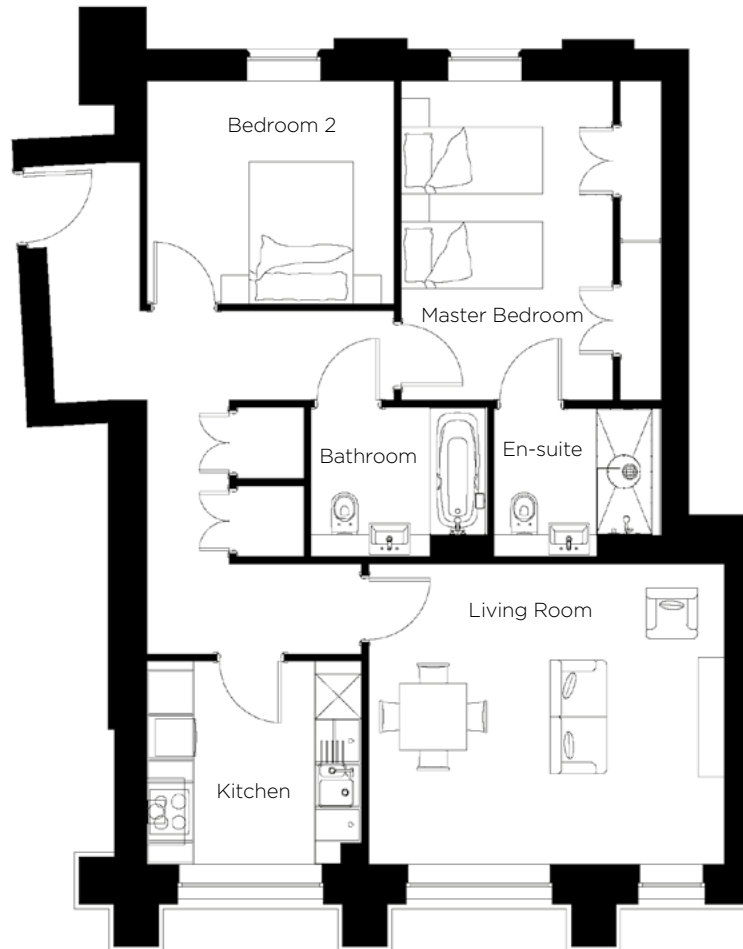


# Audley Binswood

1 Kineton Hall (D06)  
First Floor Apartment



Internal Measurements	Metric (m)	Imperial (ft)
Living Room	4.78m x 4.03m	15'8" x 13'3"
Kitchen	2.88m x 2.72m	9'5" x 8'11"
Master Bedroom	4.28m x 2.84m	14'1" x 9'4"
Bedroom 2	3.31m x 2.98m	10'10" x 9'9"



Audley Binswood  
Binswood Avenue, Leamington Spa CV32 5SE  
01926 339 484  
[www.audleyretirement.co.uk](http://www.audleyretirement.co.uk)

Built-in wardrobes in bedrooms have not been included in the overall dimensions.  
Maximum measurements shown. These pages are intended for marketing purposes only.  
Designs vary according to plot and all details should be checked at the Sales Office.  
January 2017



GOOD MOVE

# Audley Binswood

1 Kineton Hall (D06)  
First Floor Apartment



## 2 bedroom first floor apartment

This superb two bedroom apartment is situated in the beautiful Kineton Hall, which was the old Gym Block on the Binswood estate. Light and airy with large west-facing and east-facing windows, it's a spacious home with a luxury finish.

Property specifications:

- Beautiful SieMatic kitchen with large west-facing window
- Spacious living room with lots of natural light and dining space
- Master bedroom with large double fitted wardrobes and en-suite shower room
- Separate Villeroy & Boch bathroom
- Second double bedroom

Audley Binswood  
Binswood Avenue, Leamington Spa CV32 5SE  
01926 339 484  
[www.audleyretirement.co.uk](http://www.audleyretirement.co.uk)