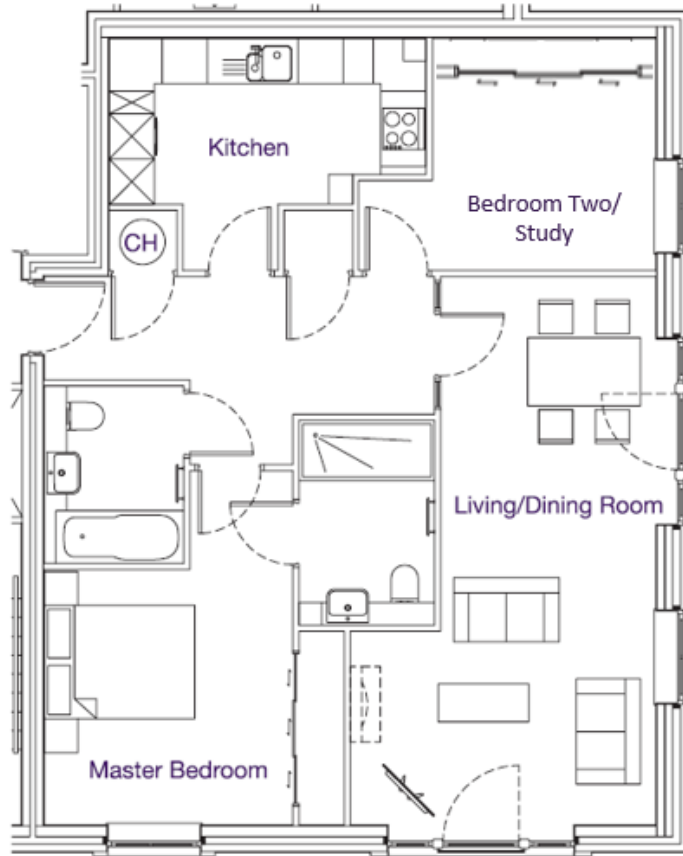
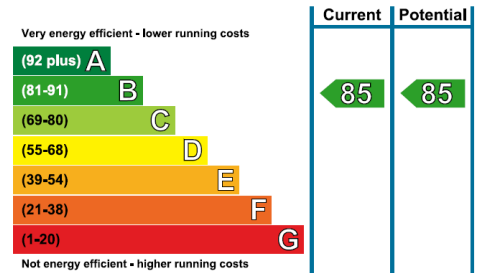


Audley Inglewood

52 Inglewood House
2 Bedroom first floor apartment



Internal Measurements	Metric (m)	Imperial (ft)
Kitchen	4.20m x 3.08m	13'9" x 10'1"
Living/dining room	7.27m x 4.01m	23'10" x 13'2"
Master bedroom	4.70m x 3.98m	15'5" x 13'1"
Bedroom two	3.94m x 3.08m	12'11" x 10'1"
Total Sq.ft	858	



Audley Inglewood
Templeton Road, Kintbury, Hungerford, RG17 9AA
01488 682 100 inglewoodsales@audleyvillages.co.uk
www.audleyvillages.co.uk

Built in wardrobes in bedrooms have not been included in the overall dimensions.
Maximum measurements shown. These pages are intended for marketing purposes only.
Designs vary according to plot and all details should be checked at the Sales office.
April 2019



Audley Inglewood

52 Inglewood House
2 Bedroom first floor apartment



2 bedroom first floor apartment



This lovely two bedroom first floor apartment enjoys wide south-facing views across Inglewood's parklands. The bright and sunny apartment has a generous reception space, a master bedroom with an en suite shower room and a family bathroom. The second bedroom has extensive additional fitted storage to complement either a study or guest room.



Property specifications

- Dual aspect reception room with far reaching views
- South-facing position
- Fitted SieMatic kitchen with integrated appliances
- Master bedroom with fitted wardrobes and an en suite shower room
- Second bedroom/study with additional storage
- Elegant hall and family bathroom



Price £465,000 (other fees apply)

Monthly management fee £783.07

Bistro credit £57.86

Annual Ground rent £250

Viewing by appointment with the sales office.

Audley Inglewood
Templeton Road, Kintbury, Hungerford, RG17 9AA
01488 682 100 inglewoodsales@audleyvillages.co.uk
www.audleyvillages.co.uk

