

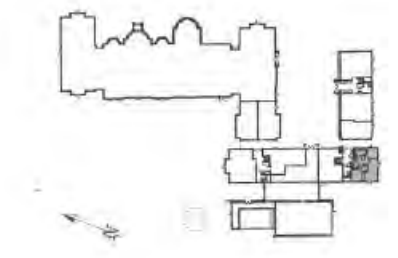
Audley Inglewood

51 Inglewood House
Ground Floor Resale Apartment



Internal Measurements

	Metric (m)	Imperial (ft)
Kitchen/Dining/Study	8.10mx 3.08m	26'7" x 10'1"
Living /Dining room	7.27mx 4.01m	23'10"x 13'2"
Master bedroom	4.70m x 4.02m	15'5" x 13'2"
Total Sq.ft		867 sq ft



Audley Inglewood
Templeton Road, Kintbury, Hungerford RG17 9AA
01488 682100 inglewoodsales@audleyvillages.co.uk
www.audleyvillages.co.uk

Built-in wardrobes in bedrooms have not been included in the overall dimensions. Maximum measurements shown. These pages are intended for marketing purposes only. Designs vary according to plot and all details should be checked at the Sales Office. January 2017



Audley Inglewood

51 Inglewood House
Ground Floor Resale Apartment



1 bedroom ground floor apartment



The private walled garden is the crowning glory of this property with a stunning area of planting, pergola and trompe d'oeil. Previously a two bedroom apartment, the current owner has converted the second bedroom to create a spacious eat-in kitchen.

Property specifications:

- Wonderful private walled garden
- Fully fitted kitchen with dining room and study area
- Bedroom with en suite shower room
- Family Bathroom



Price £495,000 (other fees apply)

Monthly Management Fee £783.07
Monthly bistro credit £57.86
Annual Ground Rent £250

Viewings by appointment with the sales office.

Audley Inglewood
Templeton Road, Kintbury, Hungerford RG17 9AA
01488 682100 inglewoodsales@audleyvillages.co.uk
www.audleyvillages.co.uk

