

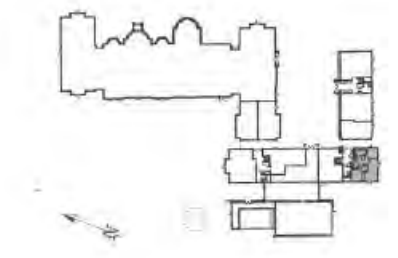
# Audley Inglewood

51 Inglewood House  
Ground Floor Resale Apartment



## Internal Measurements

|                      | Metric (m)    | Imperial (ft) |
|----------------------|---------------|---------------|
| Kitchen/Dining/Study | 8.10mx 3.08m  | 26'7" x 10'1" |
| Living /Dining room  | 7.27mx 4.01m  | 23'10"x 13'2" |
| Master bedroom       | 4.70m x 4.02m | 15'5" x 13'2" |
| Total Sq.ft          | 867 sq ft     |               |



Audley Inglewood  
Templeton Road, Kintbury, Hungerford RG17 9AA  
01488 682100 [inglewoodsales@audleyvillages.co.uk](mailto:inglewoodsales@audleyvillages.co.uk)  
[www.audleyvillages.co.uk](http://www.audleyvillages.co.uk)

Built-in wardrobes in bedrooms have not been included in the overall dimensions. Maximum measurements shown. These pages are intended for marketing purposes only. Designs vary according to plot and all details should be checked at the Sales Office. January 2017



# Audley Inglewood

51 Inglewood House  
Ground Floor Resale Apartment



## 1 bedroom ground floor apartment



The private walled garden is the crowning glory of this property with a stunning area of planting, a pergola and trompe d'oeul. Previously a 2 bedroom apartment, the current owner has converted the second bedroom to create an eat-in kitchen. Coupled with a sunny living room with doors opening to the terrace. The bedroom also has this lovely outlook.



Property specifications:

- Wonderful private walled garden
- Fully fitted kitchen with dining room and study area
- Bedroom with en suite shower room
- Family Bathroom

**Price £575,000** (other fees apply)

Monthly Management Fee £732.36

Monthly bistro credit £56.33

Annual Ground Rent £250



Viewings by appointment with the sales office.

Audley Inglewood  
Templeton Road, Kintbury, Hungerford RG17 9AA  
01488 682100 [inglewoodsales@audleyvillages.co.uk](mailto:inglewoodsales@audleyvillages.co.uk)  
[www.audleyvillages.co.uk](http://www.audleyvillages.co.uk)

