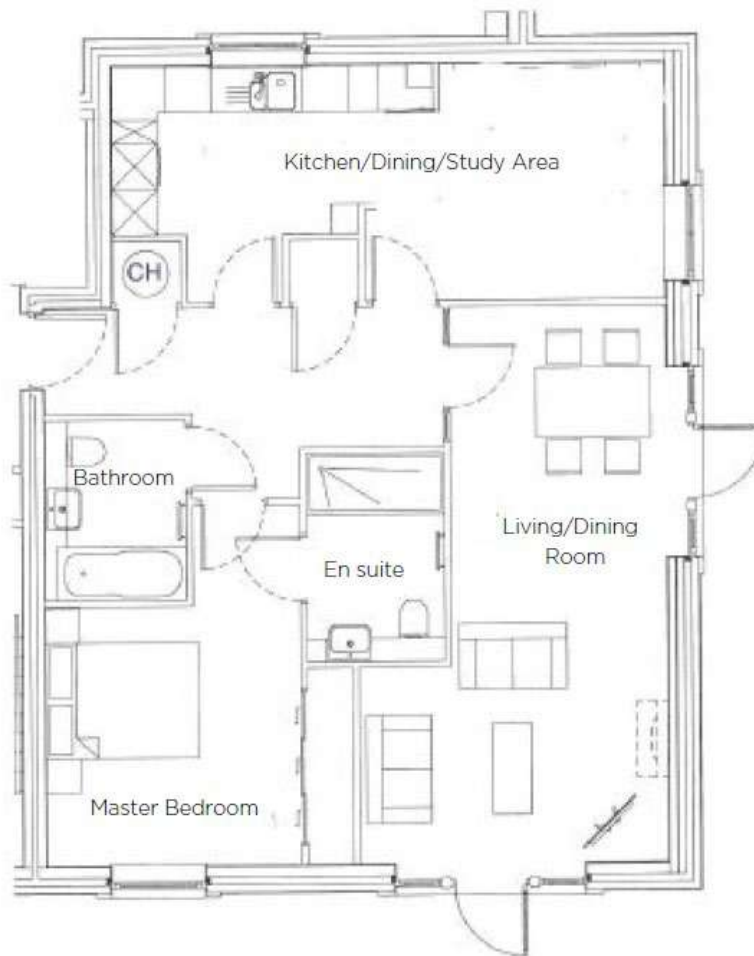
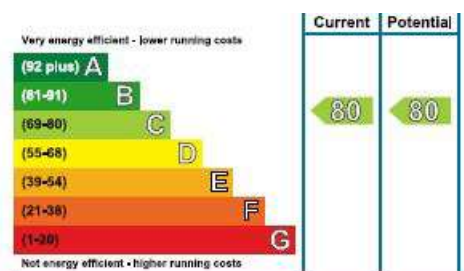


Audley Inglewood

51 Inglewood House
Two bedroom ground floor apartment

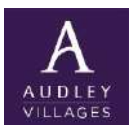


Internal Measurements	Metric (m)	Imperial (ft)
Living/dining room	7.27m x 4.01m	23'10" x 13'2"
Kitchen/dining room	8.10m x 3.08m	26'7" x 10'1"
Master Bedroom	4.70m x 4.02m	15'5" x 13'2"
Total Sq.ft 867		



Audley Inglewood
Templeton Road, Kintbury, Hungerford, RG17 9AA
01488 682 100 inglewoodsales@audleyvillages.co.uk
www.audleyvillages.co.uk

Built in wardrobes in bedrooms have not been included in the overall dimensions.
Maximum measurements shown. These pages are intended for marketing purposes only.
Designs vary according to plot and all details should be checked at the Sales office.
April 2019



Audley Inglewood

51 Inglewood House
Two bedroom ground floor apartment



Two bedroom ground floor apartment

A spacious two bedroom property conveniently located on the ground floor of Inglewood House. The centerpiece of the property is the stunning private garden with a wide selection of plants, a pergola and trompe d'oeil. The current owner has converted the second bedroom to create a large kitchen with space for dining. There is a spacious master bedroom that benefits from a fitted wardrobe and an en suite shower room.



Property specifications

- Stunning private walled garden
- Modern kitchen with dining/study space
- Master bedroom with en suite shower room and fitted wardrobes
- Family bathroom
- Large living/dining room with direct access to garden



Guide Price **£495,000** (other fees apply)

Monthly management fee £800.29
Bistro credit £59.13
Annual Ground rent £250

Viewing by appointment with the sales office.

Audley Inglewood
Templeton Road, Kintbury, Hungerford, RG17 9AA
01488 682 100 inglewoodsales@audleyvillages.co.uk
www.audleyvillages.co.uk

