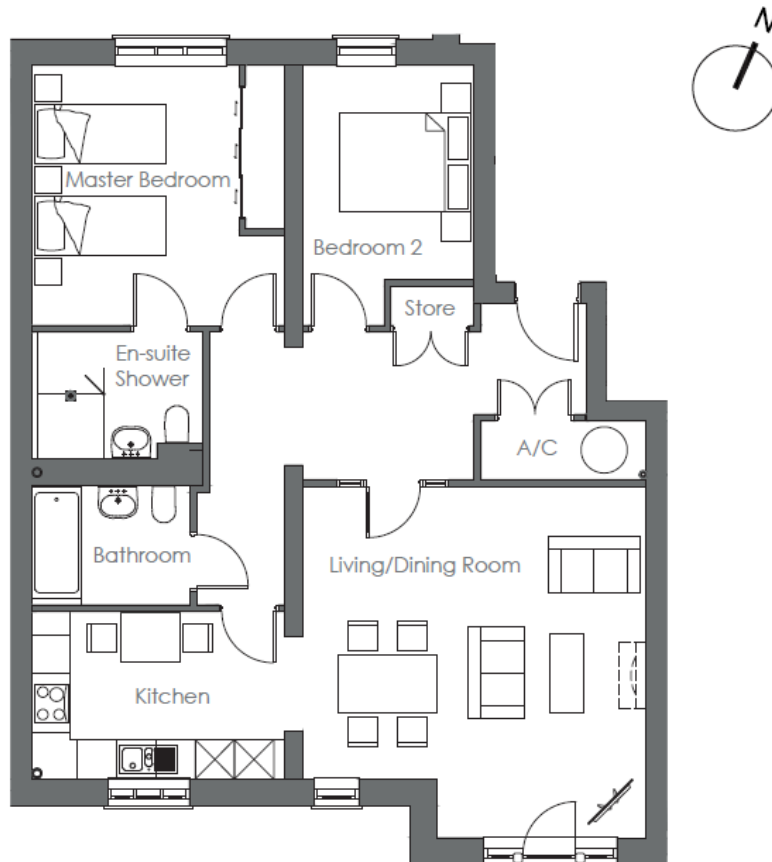
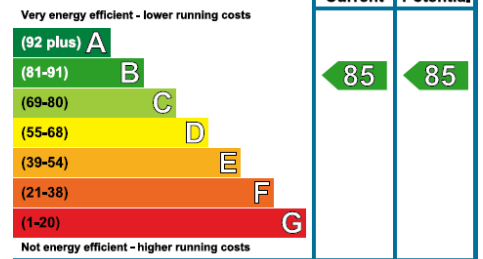


# Audley Inglewood

4 Eaton Mews  
2 Bedroom first floor apartment



Internal Measurements	Metric (m)	Imperial (ft)
Living/Dining Room	5.36m x 5.24m	17'7" x 17'2"
Kitchen	3.87m x 2.56m	12'8" x 8'5"
Master Bedroom	3.96m x 3.86m	13'0" x 12'8"
Bedroom two	3.96m x 2.63m	13'0" x 8'7"
Total Sq.ft 1012		



Audley Inglewood  
Templeton Road, Kintbury, Hungerford, RG17 9AA  
01488 682 100 [inglewoodsales@audleyvillages.co.uk](mailto:inglewoodsales@audleyvillages.co.uk)  
[www.audleyvillages.co.uk](http://www.audleyvillages.co.uk)

Built in wardrobes in bedrooms have not been included in the overall dimensions.  
Maximum measurements shown. These pages are intended for marketing purposes only.  
Designs vary according to plot and all details should be checked at the Sales office.  
April 2019



# Audley Inglewood

4 Eaton Mews  
2 Bedroom first floor apartment



## 2 bedroom first floor apartment



A charming two bedroom apartment boasting a spacious living/dining room, which is complimented by a Juliet balcony with leafy views. The property has a modern fully fitted SieMatic kitchen with integrated Neff appliances and leads directly onto the living/dining room. The master bedroom is well-appointed and benefits from fitted wardrobes and an en suite shower room.



### Property specifications

- Spacious living/dining room with Juliet balcony
- Fully fitted modern kitchen
- Master bedroom with en suite shower room and fitted wardrobes
- Guest bedroom and family bathroom
- Elegant hallway with ample storage facilities



**Guide Price £590,000** (other fees apply)

Monthly management fee £783.07  
Bistro credit £57.86  
Annual Ground rent £500

Viewing by appointment with the sales office.

Audley Inglewood  
Templeton Road, Kintbury, Hungerford, RG17 9AA  
01488 682 100 [inglewoodsales@audleyvillages.co.uk](mailto:inglewoodsales@audleyvillages.co.uk)  
[www.audleyvillages.co.uk](http://www.audleyvillages.co.uk)

