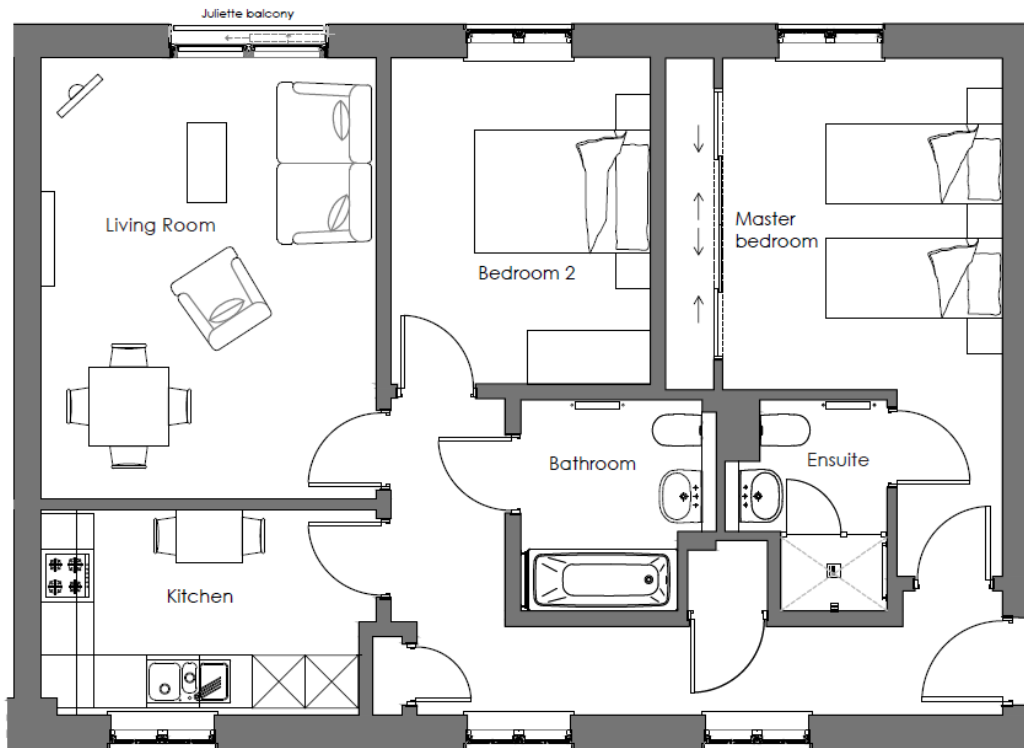
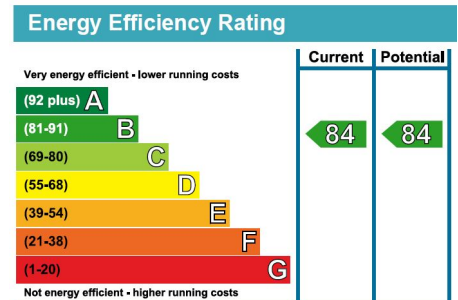


Audley Mote House

4 Woodville Court
2 Bedroom pre-owned first floor apartment



Internal Measurements	Metric (m)	Imperial (ft)
Living/Dining Room	4.99 x 3.81	16'5" x 12'6"
Kitchen	3.60 x 2.32	11'10" x 7'8"
Master Bedroom	3.76 x 3.18	12'4" x 10'5"
Bedroom 2	3.71 x 2.95	12'2" x 9'8"
En Suite	2.33 x 1.68	7'8" x 5'6"



Audley Mote House
Mote Park, Nr Bearsted, Kent, ME15 8NQ
01622 737 279 motesales@audleyvillages.co.uk
www.audleyvillages.co.uk

Built in wardrobes in bedrooms have not been included in the overall dimensions.
Maximum measurements shown. These pages are intended for marketing purposes only.
Designs vary according to plot and all details should be checked at the Sales office.
May 2019



Audley Mote House

4 Woodville Court
2 Bedroom pre-owned first floor apartment



2 bedroom first floor apartment



This two bedroom, two bathroom first floor apartment has a spacious living/dining room area that is perfectly complimented by a Juliette balcony. There are two good sized bedrooms, including the master bedroom which has twin wardrobes with sliding doors and benefits from an en-suite shower room. The property has woodland views to the rear and is located conveniently close to Mote House and all of the village amenities including the restaurant, pool and gym.



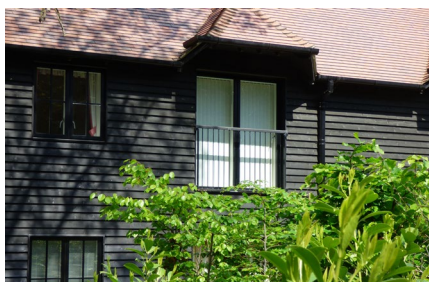
Property specifications

- Fully fitted luxury kitchen
- Spacious east-facing living room with Juliette balcony
- Master bedroom with en-suite shower and fitted wardrobes
- Second bedroom and family bathroom
- Car parking available

Guide Price £375,000 (other fees apply)

Monthly management fee £760.55
Annual ground rent £500

Viewing by appointment with the sales office.



Photos for illustration purposes only

Audley Mote House
Mote Park, Nr Bearsted, Kent, ME15 8NQ
01622 737 279 motesales@audleyvillages.co.uk
www.audleyvillages.co.uk

