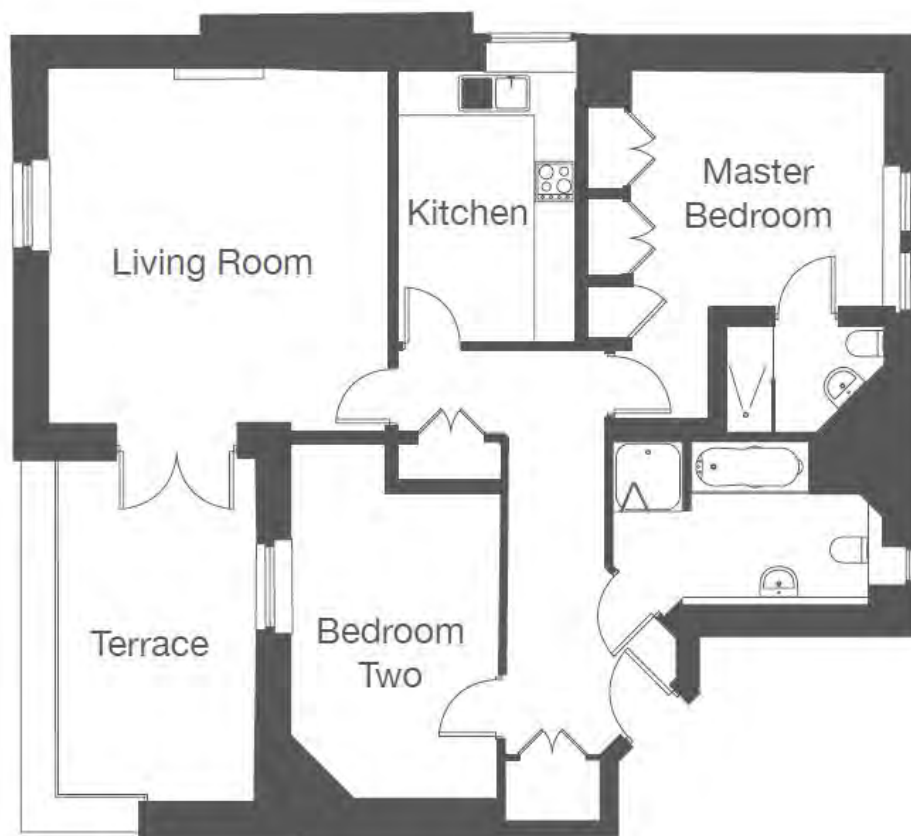
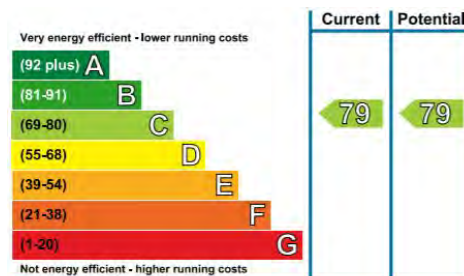


Audley St Elphin's Park

4 St Elphin's House
Two Bedroom Pre-owned Apartment



Internal Measurements	Metric (m)	Imperial (ft)
Kitchen	3.90m x 2.60m	12'9" x 8'5"
Living Room	5.20m x 4.90m	17'0" x 16'0"
Master Bedroom	5.20m x 4.30m	17'0" x 14'1"
Bedroom 2	5.10m x 3.00m	16'8" x 9'10"



Audley St Elphin's Park
St Elphin's Park, Dale Road South, Darley Dale, Matlock DE4 2RH
01629 733 337 stelphinssales@audleyvillages.co.uk
www.audleyvillages.co.uk

Built-in wardrobes in bedrooms have not been included in the overall dimensions.
Maximum measurements shown. These pages are intended for marketing purposes only.
Designs vary according to plot and all details should be checked at the Sales Office.
July 2017



Audley St Elphin's Park

4 St Elphin's House
Two Bedroom Pre-owned Apartment



2 bedroom first floor apartment

This spacious two bedroom first floor apartment is located conveniently inside St Elphin's House with all the facilities, including the Audley Club, restaurant, bistro, lounge and library.

Property specifications:

- Master bedroom with en suite shower room
- Alno kitchen with integrated fitted appliances
- Character high ceilings and long windows
- Main house location
- Fireplace installed
- Lift access
- Allocated parking space

Guide Price: £300,000 (other fees apply)

Monthly Management Fee £696.99

Annual Ground Rent £250.00

Viewings by appointment with the sales office

Audley St Elphin's Park
St Elphin's Park, Dale Road South, Darley Dale, Matlock DE4 2RH
01629 733 337 stelphinsales@audleyvillages.co.uk
www.audleyvillages.co.uk

