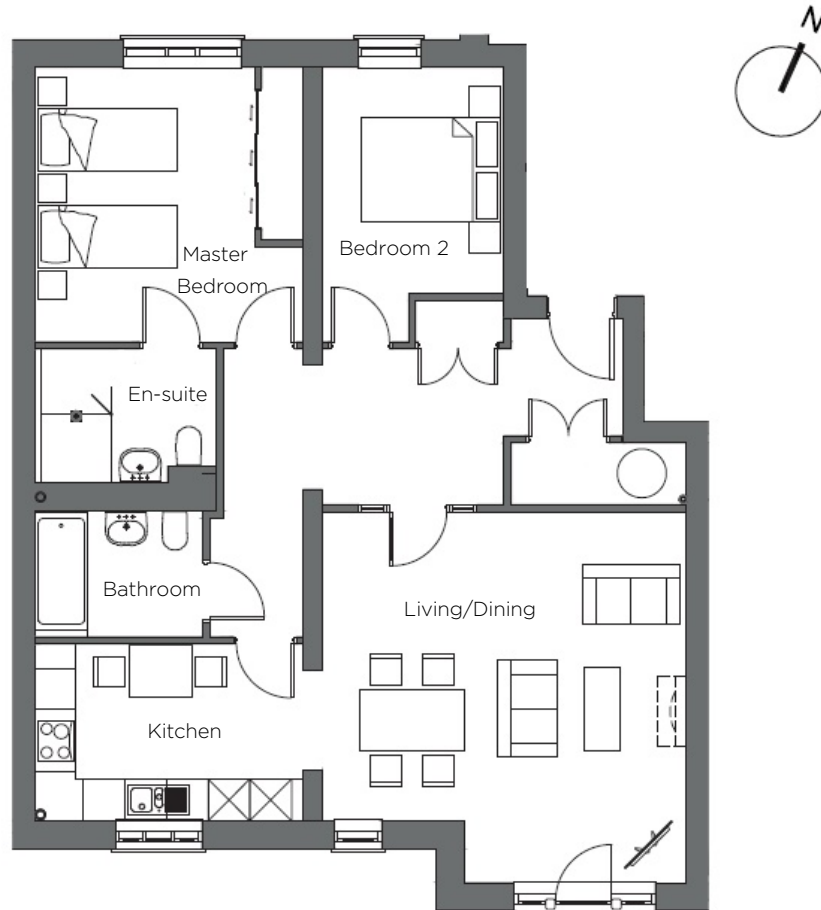


Audley Inglewood

4 Eaton Mews
First Floor Resale Apartment

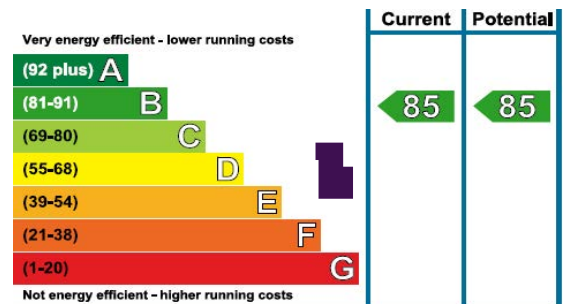


Internal Measurements	Metric (m)	Imperial (ft)
Living/Dining	5.36m x 5.24m	17'7" x 17'2"
Kitchen	3.87m x 2.56m	2'8" x 8'5"
Master Bedroom	13.96m x 3.86m	13' x 12'8"
Bedroom 2	3.96m x 2.63m	13' x 8'7"

Total Sq.ft 1012 sq ft

Audley Inglewood
Templeton Road, Kintbury, Hungerford RG17 9AA
01488 682100 inglewoodsales@audleyvillages.co.uk
www.audleyvillages.co.uk

Built-in wardrobes in bedrooms have not been included in the overall dimensions. Maximum measurements shown. These pages are intended for marketing purposes only. Designs vary according to plot and all details should be checked at the Sales Office. January 2018



Audley Inglewood

4 Eaton Mews
First Floor Resale Apartment



2 bed first floor apartment

An attractive 2 bedroom apartment with sunny aspect and leafy views towards the parkland. The good sized reception room has room for a dining table, as has the adjacent kitchen, and the elegant hall links the rooms.

Property specifications:

- Generous reception room with Juliette balcony and countryside views
- Fully fitted kitchen with space for table
- Master bedroom with en-suite shower room and fitted wardrobes
- Second bedroom and family bathroom
- Elegant hall with storage cupboards

Price £650,000 (other fees apply)

Monthly Management Fee £762.48

Monthly bistro credit £56.33

Annual Ground Rent £500

Viewings by appointment with the sales office

Audley Inglewood
Templeton Road, Kintbury, Hungerford RG17 9AA
01488 682100 inglewoodsales@audleyvillages.co.uk
www.audleyvillages.co.uk

