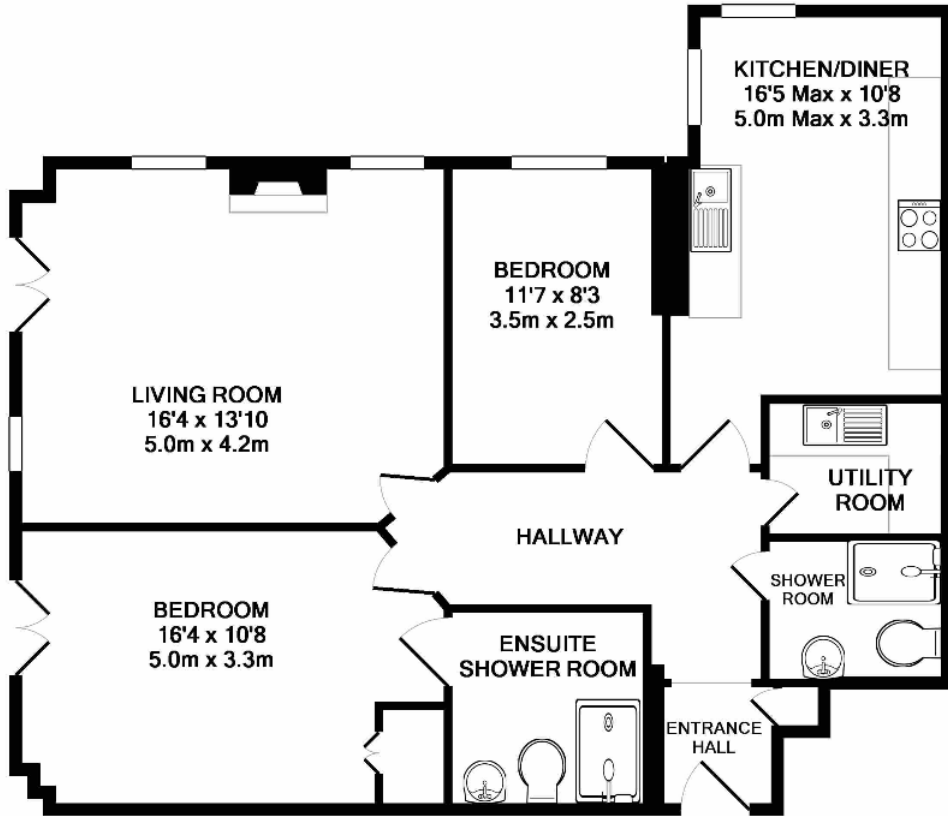


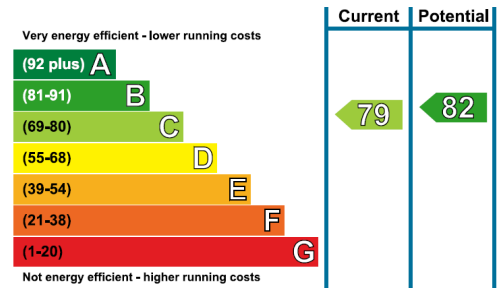
# Audley Willicombe Park

4 Beech Court

Two bedroom 'pre-owned' ground floor apartment



Internal Measurements	Metric (m)	Imperial (ft)
Living Room	5.0m x 4.2m	16'4" x 13'10"
Kitchen	5.0m x 3.3m	16'5" x 10'8"
Bedroom 1	5.0m x 3.3m	16'4" x 10'8"
Bedroom 2	3.5m x 2.5m	11'7" x 8'3"
Total Sq.Ft	915	



Audley Willicombe Park  
 Willicombe House, Royal Tunbridge Wells, Kent TN2 3UU  
 01892 457 002 willicombesales@audleyvillages.co.uk

Built in wardrobes in bedrooms have not been included in the overall dimensions.  
 Maximum measurements shown. These pages are intended for marketing purposes only.  
 Designs vary according to plot and all details should be checked at the Sales office.  
 April 2019



# Audley Willicombe Park

4 Beech Court

Two bedroom 'pre-owned' ground floor apartment



## Two Bedroom Apartment

This two bedroom apartment is positioned on the ground floor of Beech Court and only a short walk to Willicombe House, the home of the Audley Club. There are two good sized bedrooms, including the master bedroom which enjoys fitted wardrobes and an en suite shower room. The apartment is perfectly completed by a spacious living room, a separate kitchen with integrated appliances, a utility room and a family shower room.

### Property specifications

- Ground floor apartment
- Master bedroom with an en suite shower room
- Guest bedroom and family shower room
- Separate kitchen with integrated appliances
- Utility room with sink
- Vacant possession
- Allocated parking space

**£360,000** (other fees apply)

Monthly management fee £849.17

Annual Ground Rent £100

Viewing by appointment with the sales office.

Audley Willicombe Park  
Willicombe House, Royal Tunbridge Wells, Kent TN2 3UU  
01892 457 002 willicombesales@audleyvillages.co.uk

