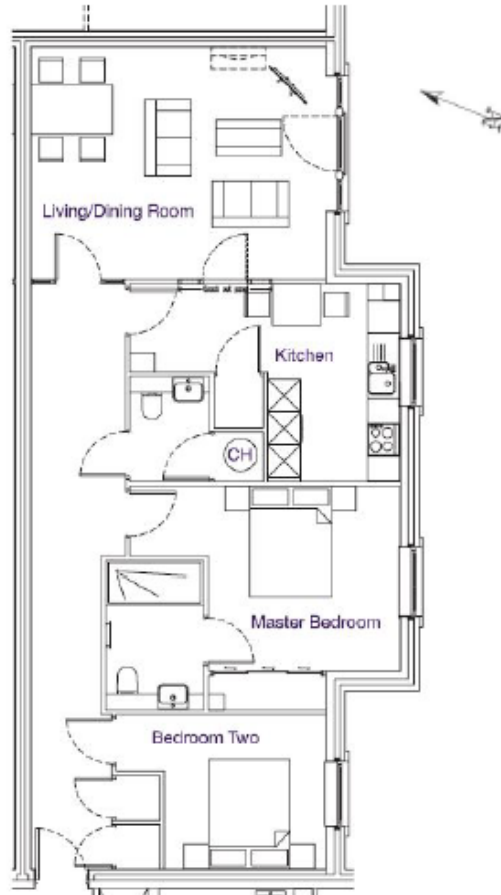
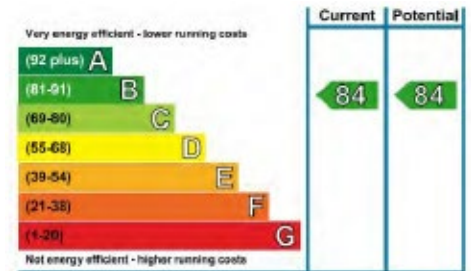


Audley Inglewood

40 Inglewood House
2 Bedroom first floor apartment



Internal Measurements	Metric (m)	Imperial (ft)
Kitchen	4.94m x 3.62m	16'2" x 11'11"
Living/Dining room	5.40m x 4.25m	17'9" x 13'11"
Master Bedroom	4.94m x 4.07m	16'2" x 13'4"
Bedroom Two	3.84m x 2.82m	12'7" x 9'3"
Total Sq.ft 940		



Audley Inglewood
Templeton Road, Kintbury, Hungerford, RG17 9AA
01488 682 100 inglewoodsales@audleyvillages.co.uk
www.audleyvillages.co.uk

Built in wardrobes in bedrooms have not been included in the overall dimensions.
Maximum measurements shown. These pages are intended for marketing purposes only.
Designs vary according to plot and all details should be checked at the Sales office.
April 2019



Audley Inglewood

40 Inglewood House
2 Bedroom first floor apartment



2 Bedroom first floor apartment

This spacious and centrally located south-facing apartment has a good sized living room, complete with floor to ceiling windows. The master bedroom is well-appointed and benefits from an en suite shower room and fitted wardrobes. There is a modern SieMatic kitchen fitted with Neff and Bosch integrated appliances.

Property specifications

- South-facing living room
- Fully fitted SieMatic kitchen
- Underfloor heating
- Master bedroom with en suite shower room
- Guest bedroom
- Cloakroom

Price £525,000 (other fees apply)

Monthly management fee £783.07
Bistro credit £57.86
Annual Ground rent £500

Viewing by appointment with the sales office.

Audley Inglewood
Templeton Road, Kintbury, Hungerford, RG17 9AA
01488 682 100 inglewoodsales@audleyvillages.co.uk
www.audleyvillages.co.uk

