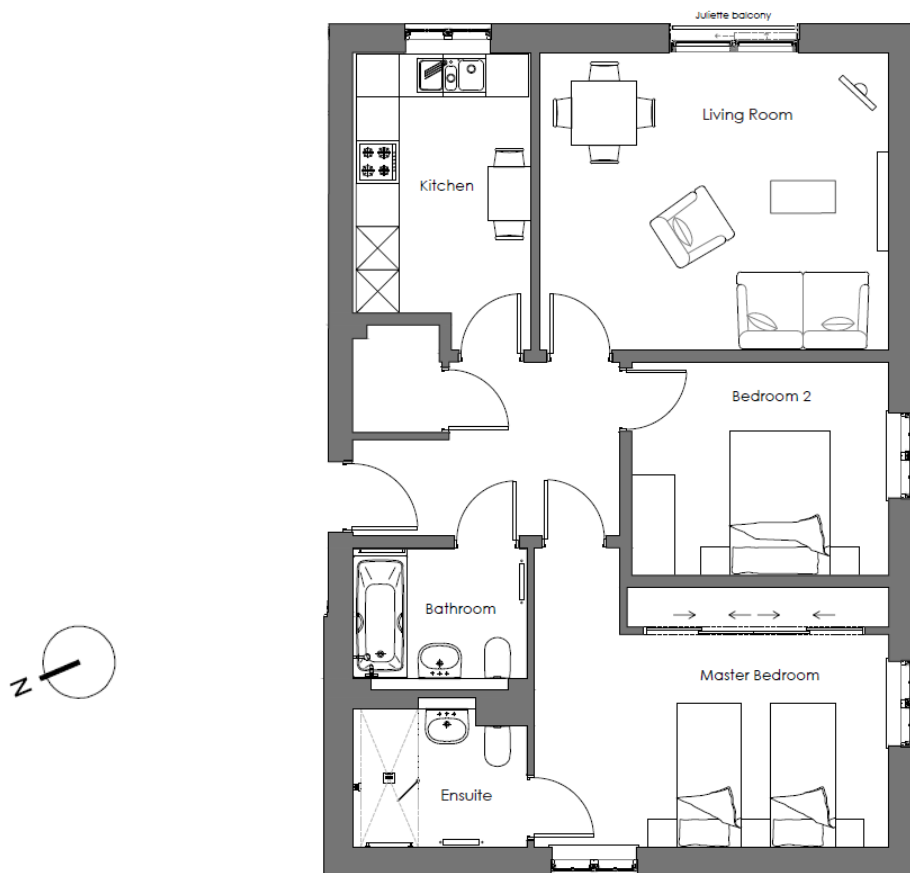
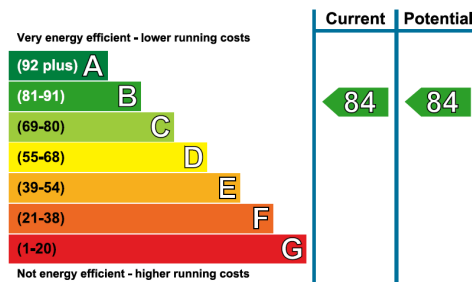


Audley Mote House

3 Woodville Court
2 Bedroom pre-owned first floor apartment



Internal Measurements	Metric (m)	Imperial (ft)
Living/Dining Room	4.84 x 4.13	15'11" x 13'7"
Kitchen	3.62 x 2.48	11'11" x 8'1"
Master Bedroom	4.92 x 2.96	16'2" x 9'9"
Bedroom 2	3.57 x 2.97	11'8" x 9'9"
Bathroom	2.42 x 1.81	7'11" x 5'11"



Audley Mote House
Mote Park, Nr Bearsted, Kent, ME15 8NQ
01622 737 279 motesales@audleyvillages.co.uk
www.audleyvillages.co.uk

Built in wardrobes in bedrooms have not been included in the overall dimensions.
Maximum measurements shown. These pages are intended for marketing purposes only.
Designs vary according to plot and all details should be checked at the Sales office.
April 2019



Audley Mote House

3 Woodville Court
2 Bedroom pre-owned first floor apartment



2 bedroom apartment

This delightful two bedroom first floor apartment in Woodville Court, is situated close to Mote House and offers views across the woodlands. The property has a large master bedroom with fitted wardrobes and an en suite bathroom. There is a large open plan living room that is perfectly enhanced by a Juliette balcony and a modern kitchen with integrated appliances.



Property specifications

- Fully fitted luxury kitchen with Corian worktops
- Large square hall
- Open plan living dining room
- Master bedroom with fitted wardrobes
- Second bedroom and family bathroom
- GCH double glazing



Guide Price **£375,000** (other fees apply)

Monthly management fee £760.54
Annual ground rent £500

Viewing by appointment with the sales office.



Audley Mote House
Mote Park, Nr Bearsted, Kent, ME15 8NQ
01622 737 279 motesales@audleyvillages.co.uk
www.audleyvillages.co.uk

