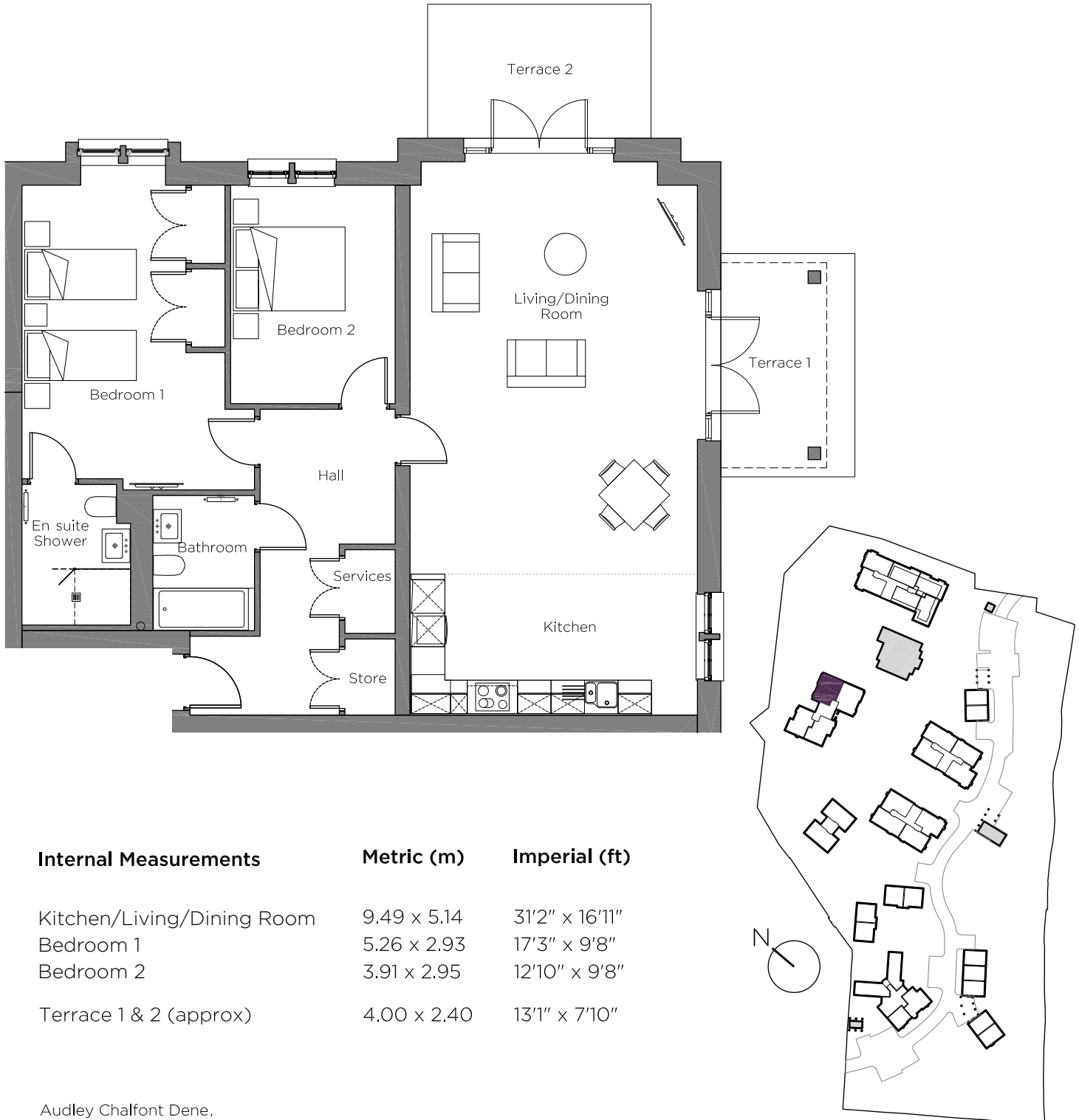


Audley Chalfont Dene

3 Skipping Way
Ground Floor Apartment
Plot 100



Internal Measurements

Metric (m)

Imperial (ft)

Kitchen/Living/Dining Room	9.49 x 5.14	31'2" x 16'11"
Bedroom 1	5.26 x 2.93	17'3" x 9'8"
Bedroom 2	3.91 x 2.95	12'10" x 9'8"
Terrace 1 & 2 (approx)	4.00 x 2.40	13'1" x 7'10"

Audley Chalfont Dene,
Rickmansworth Lane,
Chalfont St Peter, Buckinghamshire SL9 0LX
01494 876 173
www.audleyvillages.co.uk

These floor plans are illustrative and for marketing purposes only. Maximum measurements are shown with longer dimension quoted first. Dimensions are quoted for the main area of the room only. Built-in wardrobes not included in the overall room dimensions. Furniture shown to illustrate possible room layouts and not included in sale. Designs vary according to plot. All details should be checked at the Sales Office.

Audley Chalfont Dene

3 Skipping Way
Ground Floor Apartment
Plot 100



2 bedroom, ground floor apartment

A ground floor, two double bedroom apartment located near the village hall.

The dual-aspect open plan living/dining room with dining space has two terraces.

The master bedroom has an en suite shower room and double built-in wardrobe.

The fully equipped SieMatic kitchen comes with Corian worktops and integrated appliances.

Property specifications:

- Open plan kitchen/living room with dining area
- Luxury Villeroy & Boch bathrooms
- Dual-aspect, east-facing kitchen/living room
- Two terraces
- Carpeted and decorated throughout

Audley Chalfont Dene,
Rickmansworth Lane,
Chalfont St Peter, Buckinghamshire SL9 0LX
01494 876 173
www.audleyvillages.co.uk

