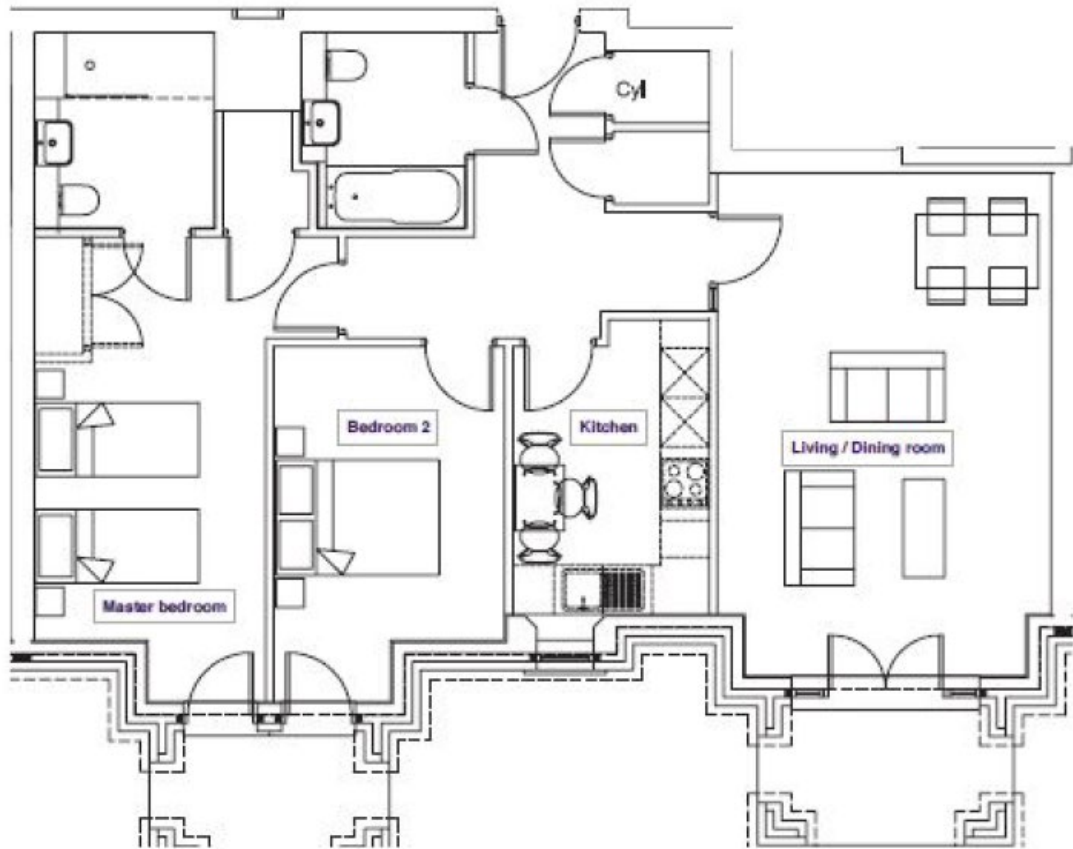


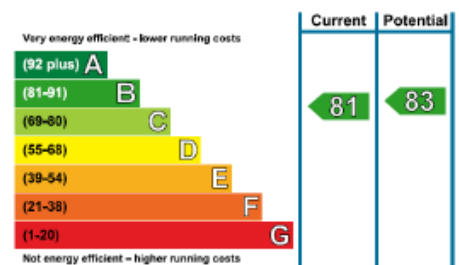
Audley St Elphin's Park

3 Robinson Court

Two bedroom ground floor pre-owned apartment



Internal Measurements	Metric (m)	Imperial (ft)
Kitchen	3.30m x 2.40m	10'9" x 7'10"
Living/Dining Room	4.10m x 6.15m	13'5" x 20'2"
Master Bedroom	2.80m x 4.95m	9'2" x 16'2"
Bedroom two	2.85m x 3.60m	9'4" x 11'9"



Audley St Elphin's Park
 Dale Road South, Darley Dale, Matlock DE4 2RH
 01629 258 001 stelphinssales@audleyvillages.co.uk

Built in wardrobes in bedrooms have not been included in the overall dimensions.
 Maximum measurements shown. These pages are intended for marketing purposes only.
 Designs vary according to plot and all details should be checked at the Sales office.
 April 2019



Audley St Elphin's Park

3 Robinson Court

Two bedroom ground floor pre-owned apartment



Two Bedroom Apartment

This bright south-facing two bedroom apartment is conveniently located on the ground floor of Robinson Court and next to St Elphin's House along with the village amenities. The property boasts a luxurious SieMatic kitchen along with modern integrated appliances. The living room is large and is perfectly complemented via French doors that lead onto the terrace area.



Property specifications

- Living room with French doors leading onto the terrace area
- SieMatic kitchen with integrated appliances
- Master bedroom with fitted wardrobes and an en suite bathroom
- Guest bedroom and bathroom
- Underfloor heating



£339,500 (other fees apply)

Monthly management fee £704.22

Annual ground rent £250

Viewing by appointment with the sales office.

Audley St Elphin's Park
Dale Road South, Darley Dale, Matlock DE4 2RH
01629 258 001 stelphinssales@audleyvillages.co.uk

