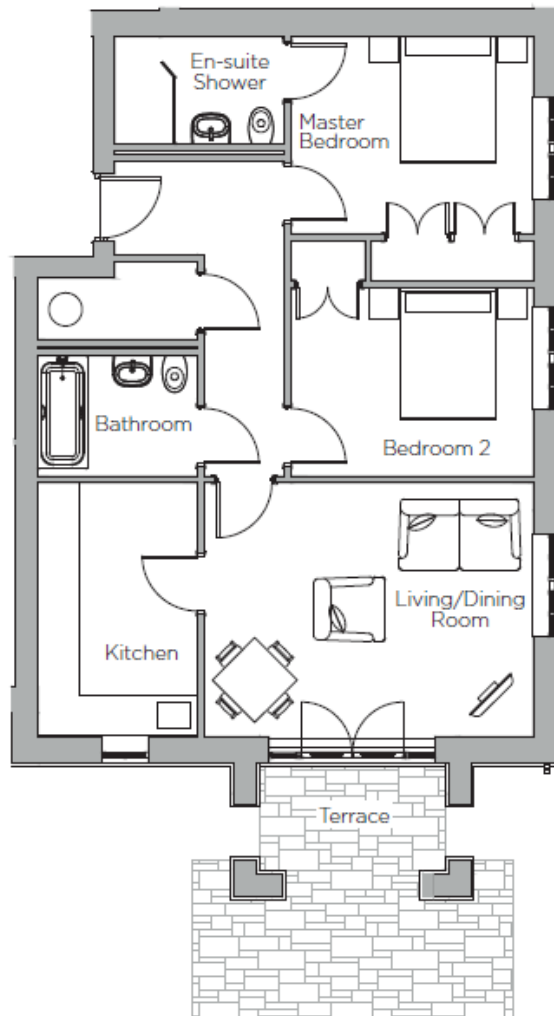


# Audley St Elphin's Park

3 Pollard Way  
Two bedroom 'pre-owned' apartment



Internal Measurements	Metric (m)	Imperial (ft)
Living/Dining Room	4.94m x 3.81m	16'2" x 12'6"
Kitchen	3.81m x 2.41m	12'6" x 7'11"
Master Bedroom	3.64m x 2.95m	11'11" x 9'8"
Bedroom 2	3.64m x 2.83m	11'11" x 9'3"
Terrace (approx)	4.8m x 2.4m	15'9" x 7'10"



Audley St Elphin's Park  
Dale Road South, Darley Dale, Matlock DE4 2RH  
01629 733 337 [stelphinssales@audleyvillages.co.uk](mailto:stelphinssales@audleyvillages.co.uk)

Built in wardrobes in bedrooms have not been included in the overall dimensions.  
Maximum measurements shown. These pages are intended for marketing purposes only.  
Designs vary according to plot and all details should be checked at the Sales office.  
November 2017



# Audley St Elphin's Park

3 Pollard Way  
Two bedroom 'pre-owned' apartment



## Two Bedroom Apartment

This lovely two bedroom apartment enters the market in a stunning condition and has never been lived in. The ground floor property enjoys a well-appointed living/dining room that offers direct access to the private south-facing terrace. There is a modern SieMatic kitchen with Corian worktops and integrated electrical appliances.



### Property specifications

- Bright and airy living/dining room
- Curtains and light fittings included
- South-facing private terrace
- Master bedroom with fitted wardrobes and an en suite shower room
- Guest bedroom
- Allocated parking space



**£310,000** (other fees apply)

**\*Move for free package included\***

Monthly management fee £721.24  
Annual Ground Rent £500

Viewing by appointment with the sales office.

Audley St Elphin's Park  
Dale Road South, Darley Dale, Matlock DE4 2RH  
01629 733 337 stelphinssales@audleyvillages.co.uk

