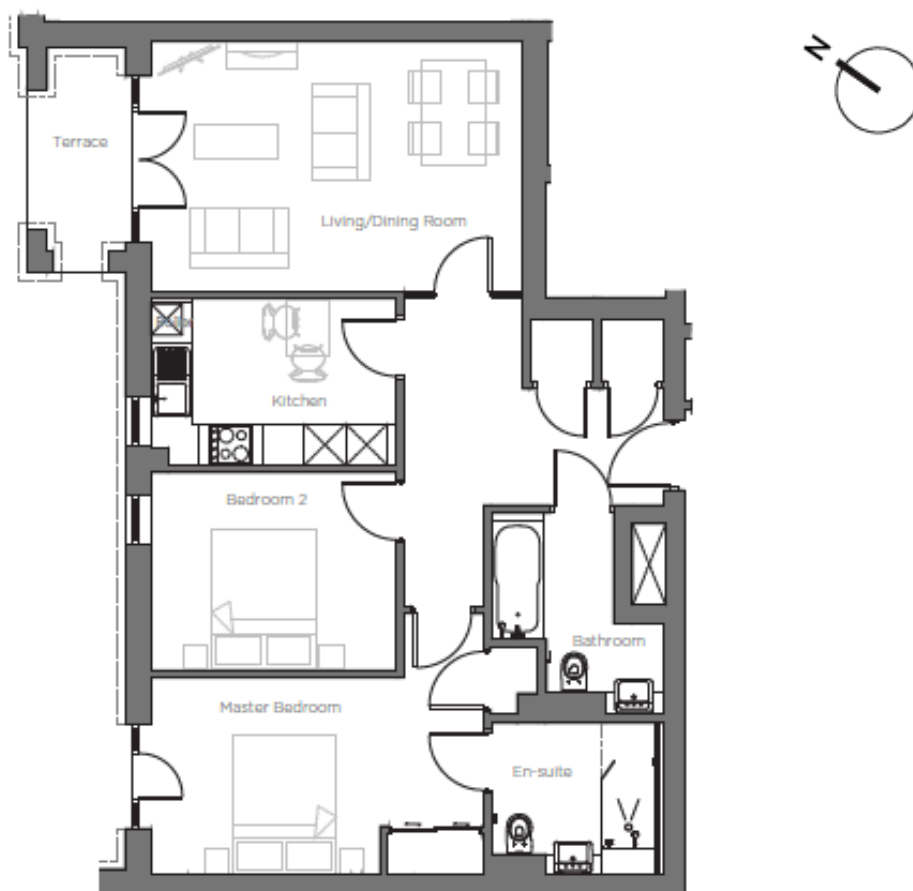
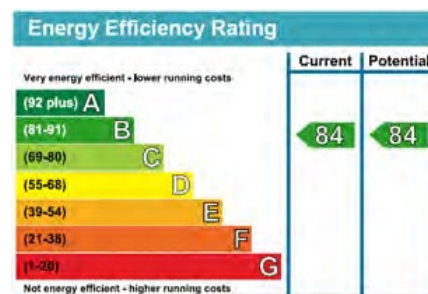


Audley St Elphin's Park

3 Kennedy Court
Two bedroom 'pre-owned' apartment



Internal Measurements	Metric (m)	Imperial (ft)
Living/Dining Room	5.34m x 3.60m	17'6" x 11'10"
Kitchen	3.53m x 2.40m	11'7" x 7'10"
Master Bedroom	4.78m x 2.84m	15'8" x 9'4"
Bedroom Two	3.53m x 2.85m	11'7" x 9'4"
Terrace	3.23m x 1.53m	10'7" x 5'0"



Audley St Elphin's Park
Dale Road South, Darley Dale, Matlock DE4 2RH
01629 733 337 stelphinssales@audleyvillages.co.uk

Built in wardrobes in bedrooms have not been included in the overall dimensions.
Maximum measurements shown. These pages are intended for marketing purposes only.
Designs vary according to plot and all details should be checked at the Sales office.
November 2017

Audley St Elphin's Park

3 Kennedy Court
Two bedroom 'pre-owned' apartment

ONE YEAR
MANAGEMENT FEE
INCLUDED



Two Bedroom Apartment

A beautiful two bedroom apartment that has been freshly decorated and fitted with new carpets throughout. The south-west facing property boasts two separate terraces with hillside and swale views. There is a modern SieMatic kitchen with integrated appliances, a spacious master bedroom that benefits from fitted wardrobes and an en suite shower room.



Property specifications

- Modern SieMatic kitchen with integrated appliances and Corian work surfaces
- Living/dining room with French doors leading onto the terrace area
- Master bedroom with fitted wardrobes, en suite shower room and access to second terrace
- Second double bedroom and family bathroom
- No chain
- Allocated parking space



£300,000 (other fees apply)

One year management fee included

Monthly management fee £739.27

Annual ground rent £500

Viewing by appointment with the sales office.

Audley St Elphin's Park
Dale Road South, Darley Dale, Matlock DE4 2RH
01629 733 337 stelphinssales@audleyvillages.co.uk

