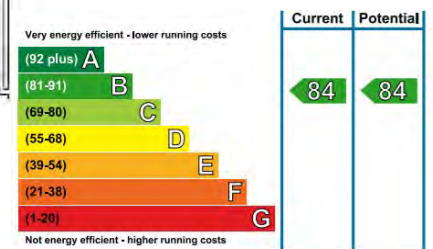
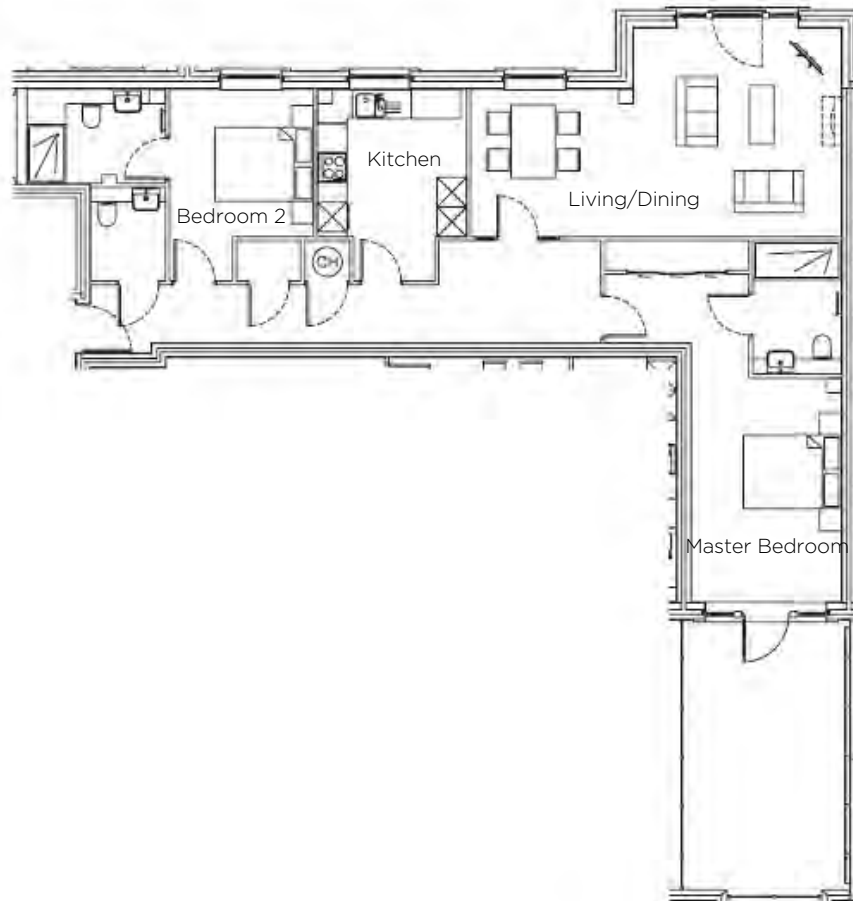


# Audley Inglewood

39 Inglewood House  
First Floor Pre-owned Apartment



Internal Measurements	Metric (m)	Imperial (ft)
Kitchen	3.90mx 3.03m	12'10" x 9'11"
Living / Dining room	7.54mx 4.24m	24'9" x 13'11"
Master bedroom	7.35mx 3.06m	24'1" x 10'0"
Bedroom 2	3.90m x 2.93m	12'10" x 9'7"
Total Sq.ft		1100



Audley Inglewood  
Templeton Road, Kintbury, Hungerford RG17 9AA  
01488 682100 [inglewoodsales@audleyvillages.co.uk](mailto:inglewoodsales@audleyvillages.co.uk)  
[www.audleyvillages.co.uk](http://www.audleyvillages.co.uk)

Built-in wardrobes in bedrooms have not been included in the overall dimensions. Maximum measurements shown. These pages are intended for marketing purposes only. Designs vary according to plot and all details should be checked at the Sales Office. January 2017



# Audley Inglewood

39 Inglewood House  
First Floor Pre-owned Apartment



## 2 bedroom first floor apartment



This spacious and elegant apartment has a good sized reception room, with sitting and dining areas, floor length windows and door to Juliette balcony. To the rear, the generous terrace enjoys a sunny aspect. Both bedrooms are en-suite.

Property specifications:



- Bright spacious reception room with sitting and dining areas
- Fully fitted kitchen with charming view
- Master bedroom suite with dressing area and en suite bathroom
- Guest bedroom with en suite shower room
- Cloakroom
- Good sized terrace with space for cultivation, seating and dining

**Price £695,000** (other fees apply)

Monthly Management Fee £762.48

Monthly Bistro Credit £56.33

Annual Ground Rent £250



Viewings by appointment with the sales office.

Audley Inglewood  
Templeton Road, Kintbury, Hungerford RG17 9AA  
01488 682100 [inglewoodsales@audleyvillages.co.uk](mailto:inglewoodsales@audleyvillages.co.uk)  
[www.audleyvillages.co.uk](http://www.audleyvillages.co.uk)

