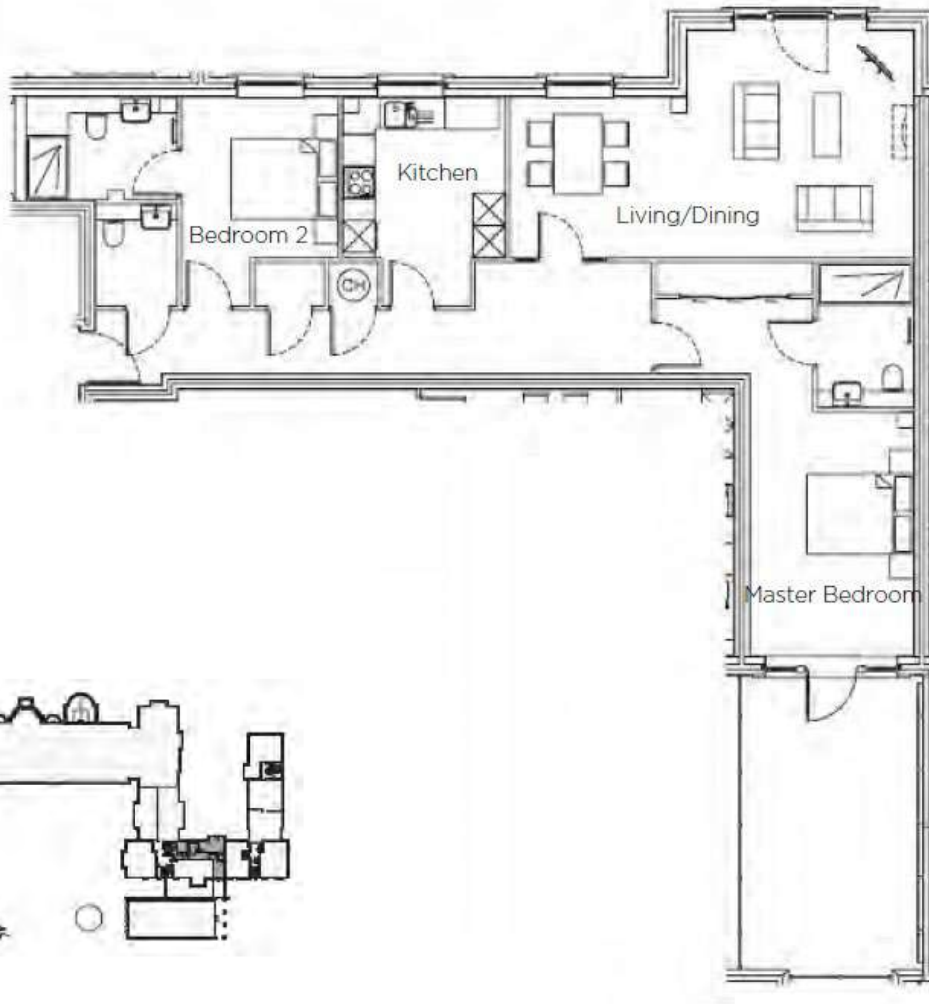
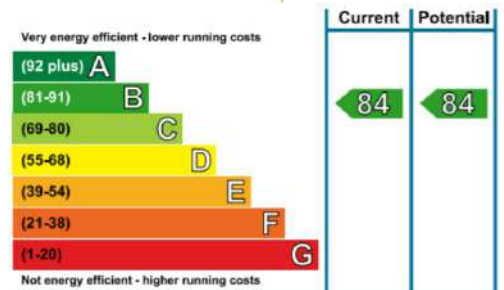


# Audley Inglewood

39 Inglewood House  
Two bedroom first floor apartment



Internal Measurements	Metric (m)	Imperial (ft)
Kitchen	3.90m x 3.03m	12'10" x 9'11"
Living/Dining room	7.54m x 4.24m	24'9" x 13'11"
Master Bedroom	7.35m x 3.06m	24'1" x 10'0"
Bedroom Two	3.90m x 2.93m	12'10" x 9'7"
Total Sq.ft	1100	



Audley Inglewood  
Templeton Road, Kintbury, Hungerford, RG17 9AA  
01488 682 100 [inglewoodsales@audleyvillages.co.uk](mailto:inglewoodsales@audleyvillages.co.uk)  
[www.audleyvillages.co.uk](http://www.audleyvillages.co.uk)

Built in wardrobes in bedrooms have not been included in the overall dimensions.  
Maximum measurements shown. These pages are intended for marketing purposes only.  
Designs vary according to plot and all details should be checked at the Sales office.  
April 2019



# Audley Inglewood

39 Inglewood House  
Two bedroom first floor apartment



## Two bedroom first floor apartment

This elegant two bedroom apartment has a large living/dining room with floor-to-ceiling windows and a Juliet balcony offering views over the gardens of Bevan Court, whilst to the rear is a private south-facing terrace with lovely views. The master bedroom is spacious and is perfectly rounded off with fitted wardrobes, an en suite bathroom and direct access to the private terrace. There is a modern SieMatic kitchen with integrated appliances and a good sized guest bedroom with its own en suite shower room plus an additional cloakroom off the hall.



### Property specifications

- Large living/dining room with views over the courtyard
- Fitted SieMatic kitchen with integrated appliances
- Master bedroom with fitted wardrobes and en suite bathroom
- Good sized terrace with space for entertaining
- Guest bedroom with en suite shower room



**Guide Price £599,950** (other fees apply)

Monthly management fee £800.29  
Bistro credit £59.13  
Annual Ground rent £250

Viewing by appointment with the sales office.

Audley Inglewood  
Templeton Road, Kintbury, Hungerford, RG17 9AA  
01488 682 100 [inglewoodsales@audleyvillages.co.uk](mailto:inglewoodsales@audleyvillages.co.uk)  
[www.audleyvillages.co.uk](http://www.audleyvillages.co.uk)

