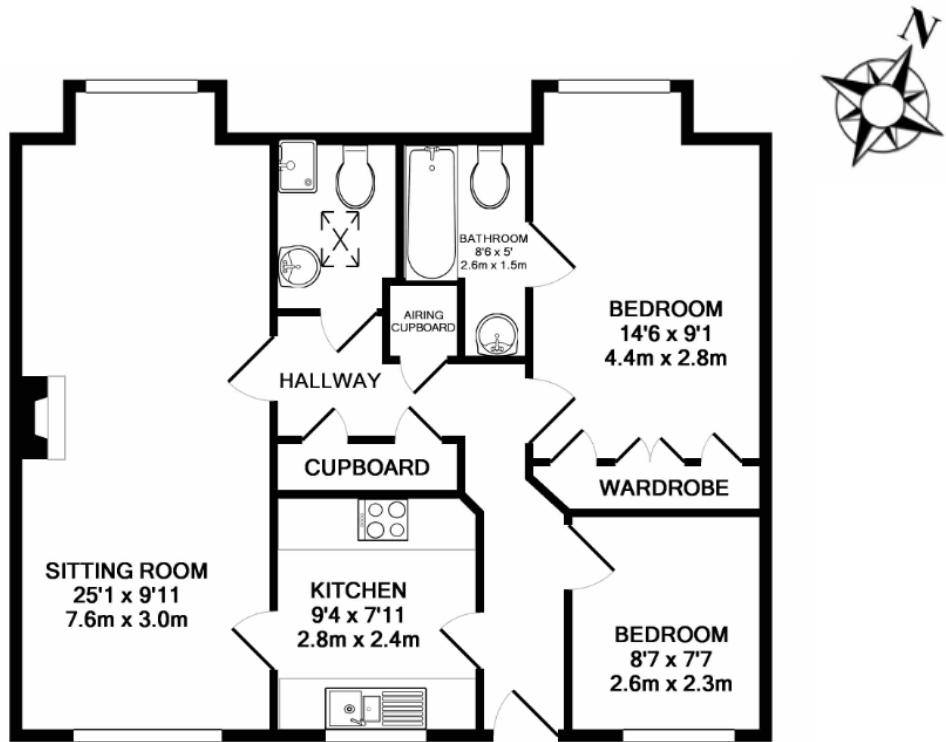
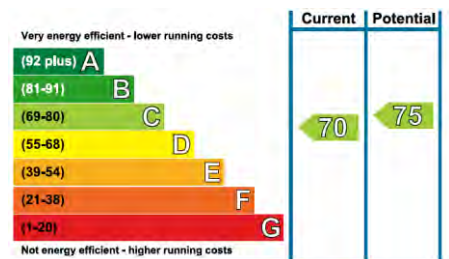


# Audley Willicombe Park

31 Willicombe Park  
Two Bedroom 'Pre-owned' Maisonette



Internal Measurements	Metric (m)	Imperial (ft)
Sitting Room	7.6m x 3.0m	25'1" x 9'11"
Kitchen	2.8m x 2.4m	9'4" x 7'11"
Bedroom 1	4.4m x 2.8m	14'6" x 9'1"
Bedroom 2	2.6m x 2.3m	8'7" x 7'7"
Bathroom	2.6m x 1.5m	8'6" x 5'0"



Audley Willicombe Park  
Willicombe House, Royal Tunbridge Wells, Kent TN2 3UU  
01892 616444 willicombesales@audleyvillages.co.uk

Built in wardrobes in bedrooms have not been included in the overall dimensions.  
Maximum measurements shown. These pages are intended for marketing purposes only.  
Designs vary according to plot and all details should be checked at the Sales office.  
April 2019

# Audley Willicombe Park

31 Willicombe Park  
Two Bedroom 'Pre-owned' Maisonette



## Two Bedroom Maisonette



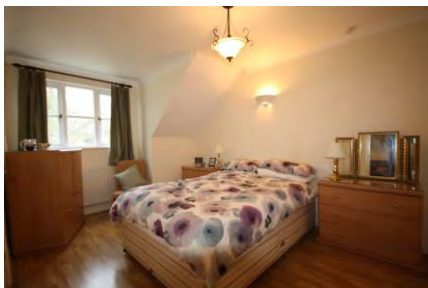
This two bedroom maisonette located in a desirable position within Willicombe Park allows easy access to Willicombe House and all of its amenities including the swimming pool, restaurant and bar.

The property features a spacious living room, large master bedroom with en-suite, separate guest bedroom and WC.



### Property specifications

- Master bedroom with en-suite shower
- Separate guest bedroom
- Spacious open plan living/dining room
- Separate kitchen
- Central heating and double glazing
- Allocated Parking
- Vacant possession



**£360,000** (other fees apply)

Monthly management fee £860.16  
Annual Ground Rent £100

Viewing by appointment with the sales office.

Audley Willicombe Park  
Willicombe House, Royal Tunbridge Wells, Kent TN2 3UU  
01892 616444 [willicombesales@audleyvillages.co.uk](mailto:willicombesales@audleyvillages.co.uk)

Photos for illustration purposes only

