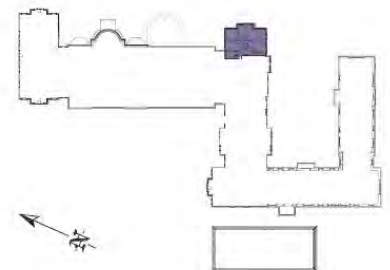


# Audley Inglewood

31 Inglewood House  
Second Floor Resale Apartment



Internal Measurements	Metric (m)	Imperial (ft)
Kitchen	3.35m x 3.00m	11'0" x 9'10"
Living / Dining room	7.70m x 4.25m	25'3" x 13'11"
Master bedroom	4.85m x 4.20m	15'9" x 13'9"
Bedroom 2	3.35m x 2.80m	11'0" x 9'2"
Total Sq.ft		921



Audley Inglewood  
Templeton Road, Kintbury, Hungerford RG17 9AA  
01488 682100 [inglewoodsales@audleyvillages.co.uk](mailto:inglewoodsales@audleyvillages.co.uk)  
[www.audleyvillages.co.uk](http://www.audleyvillages.co.uk)

Built-in wardrobes in bedrooms have not been included in the overall dimensions. Maximum measurements shown. These pages are intended for marketing purposes only. Designs vary according to plot and all details should be checked at the Sales Office. January 2017



# Audley Inglewood

31 Inglewood House  
Second Floor Resale Apartment



## 2 bedroom second floor apartment



This sunny, triple aspect second floor apartment overlooking the front of Inglewood House has a spacious living/dining area with Juliette balcony. The property has a fully fitted kitchen with ample storage. There are two double bedrooms, both with fitted wardrobes and master en suite.



Property specifications:

- Elegant reception room with wonderful views
- Fully fitted kitchen with additional storage
- Master bedroom with excellent storage and en suite shower room
- Second Bedroom
- Family bathroom



**Offers In Excess of £550,000** (other fees apply)

Monthly Management Fee £752.13  
Monthly bistro credit £57.86  
Annual Ground Rent £250.00

Viewings by appointment with the sales office.

Audley Inglewood  
Templeton Road, Kintbury, Hungerford RG17 9AA  
01488 682100 [inglewoodsales@audleyvillages.co.uk](mailto:inglewoodsales@audleyvillages.co.uk)  
[www.audleyvillages.co.uk](http://www.audleyvillages.co.uk)

