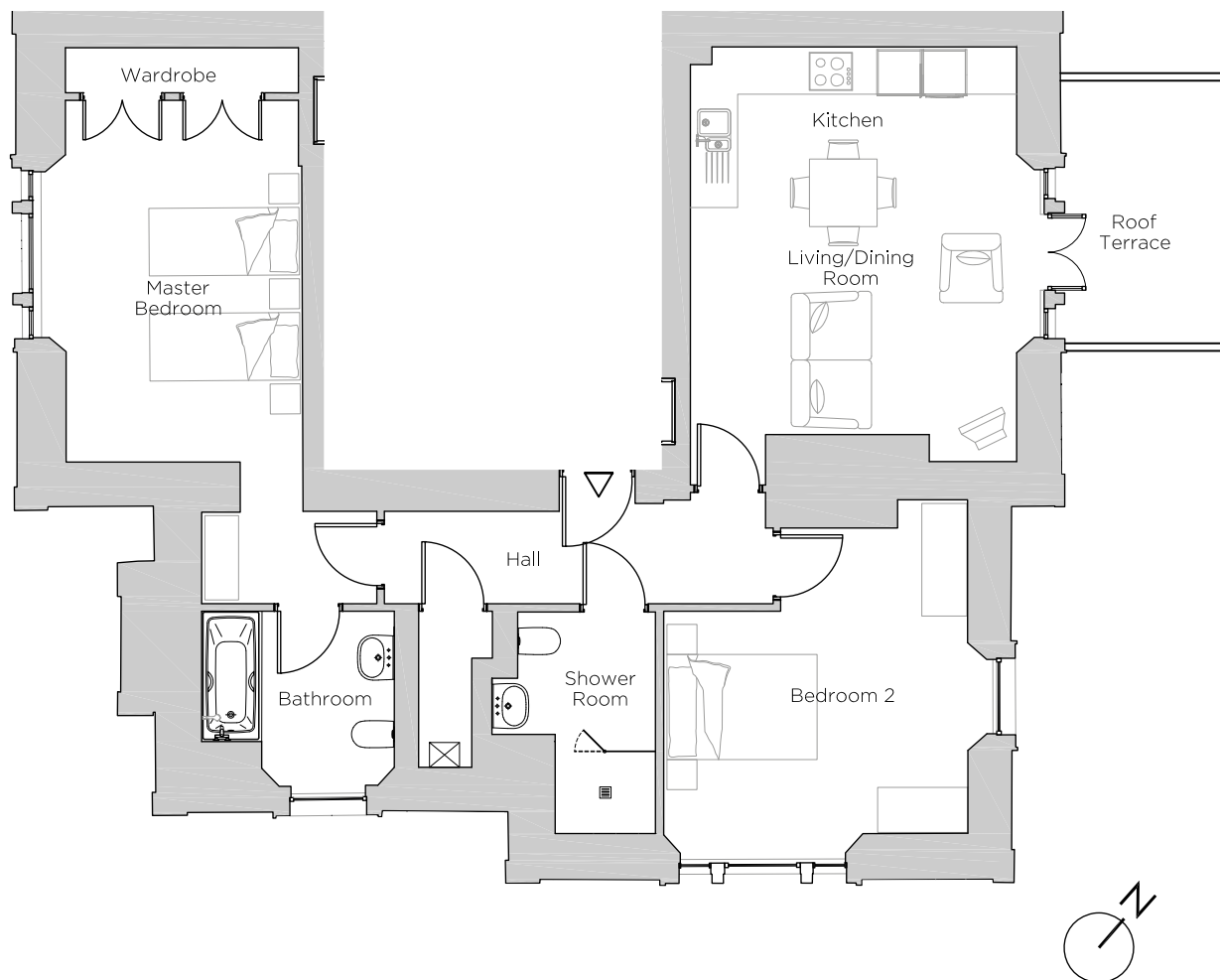
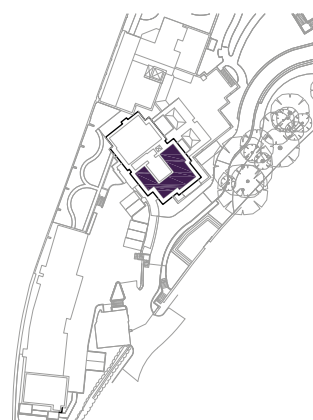


# Audley Ellerslie

2 Lind House  
 First Floor Apartment  
 Plot 98



Internal Measurements	Metric (m)	Imperial (ft)
Living/Dining Room	4.34 x 3.03	14'3" x 10'0"
Kitchen	4.34 x 2.12	14'3" x 6'11"
Master Bedroom	3.10 x 4.81	10'2" x 15'10"
Bedroom 2	4.05 x 2.98	13'4" x 9'9"
Roof Terrace	2.09 x 3.50	6'10" x 11'6"



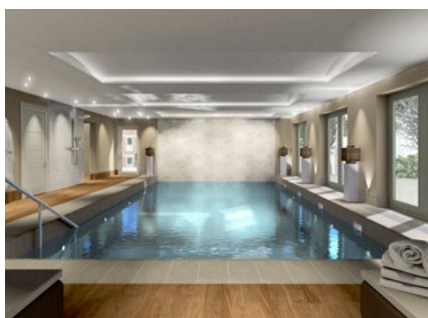
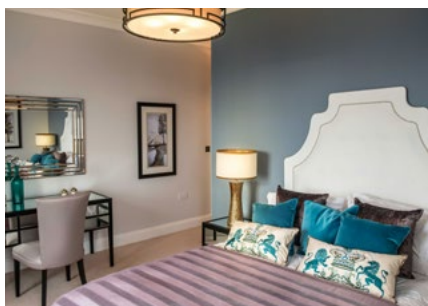
Audley Ellerslie  
 Abbey Road, Malvern, Worcestershire WR14 3HL  
 01684 438 400  
[www.audleyvillages.co.uk](http://www.audleyvillages.co.uk)

These floorplans are illustrative and for marketing purposes only. Maximum measurements are shown. Wardrobes not included in the overall room dimensions. Furniture shown to illustrate possible room layouts and not included in sale. Designs vary according to plot. All details should be checked at the Sales Office.



# Audley Ellerslie

2 Lind House  
First Floor Apartment  
Plot 98



## 2 bedroom first floor apartment

Located in the prime position of the Main House allowing easy access to the village facilities including the health club, swimming pool, restaurant, bistro and library.

This spacious apartment has two large double bedrooms, with built in wardrobes and Villeroy & Boch sanitary ware in the en-suite. The open plan kitchen/living/dining room has access to a large roof terrace via French doors.

Property specifications:

- Dual aspect second bedroom
- Additional shower room
- Fully fitted luxury SieMatic kitchen with Corian worktops
- Large walk-in cupboard in the hallway
- Open plan kitchen/living/dining room with access on to a fabulous terrace

Audley Ellerslie  
Abbey Road, Malvern, Worcestershire WR14 3HL  
01684 438 400  
[www.audleyvillages.co.uk](http://www.audleyvillages.co.uk)

