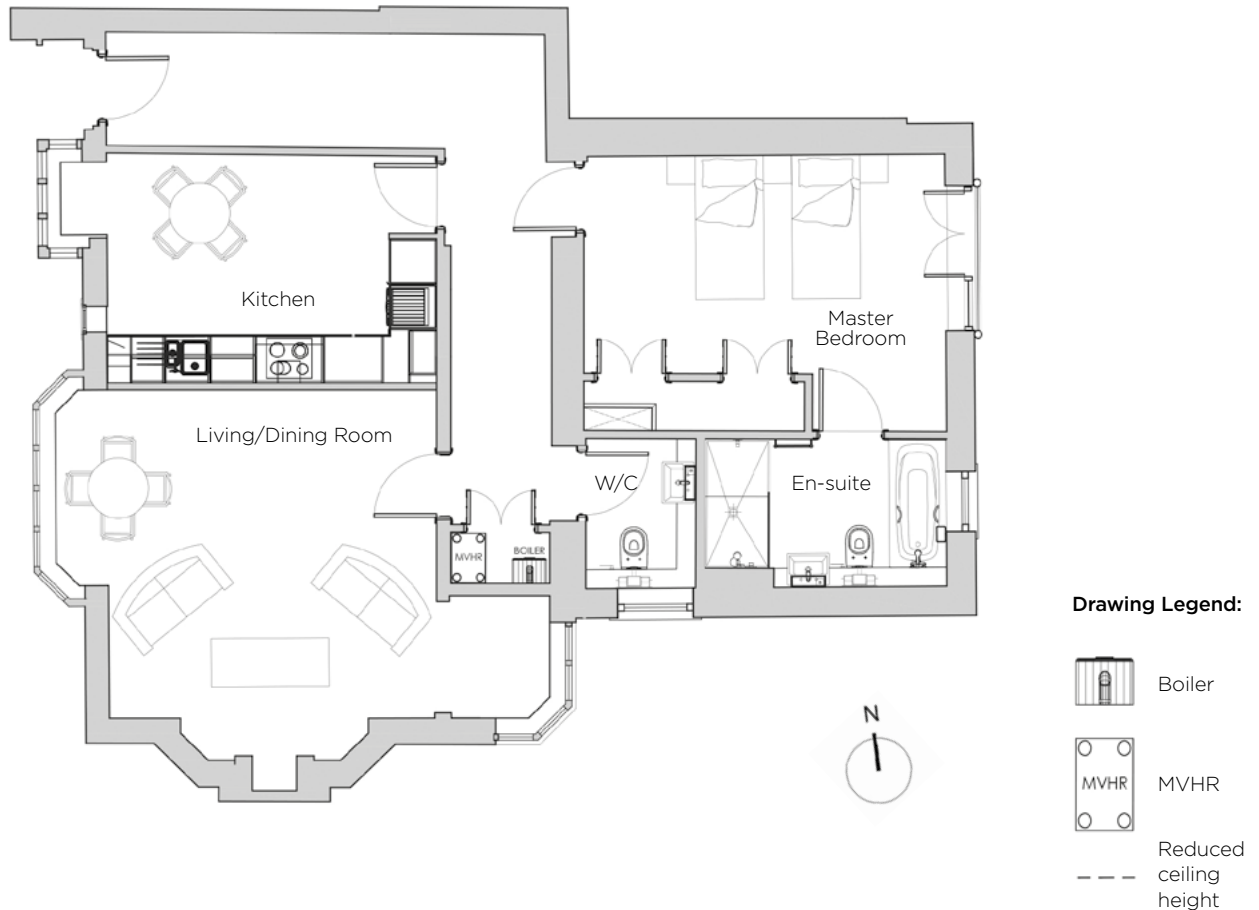
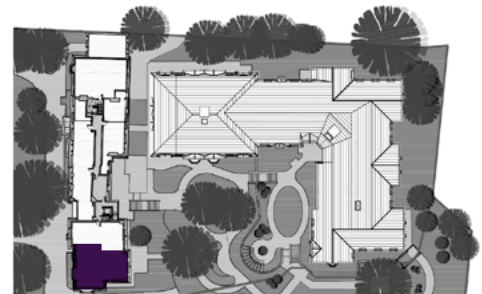


Audley St George's Place

2 Chains Court (B01)
Ground Floor Apartment



Internal Measurements	Metric (m)	Imperial (ft)
Living/Dining Room	5.24m x 5.07m	17'19" x 16'63"
Kitchen	3.55m x 2.35m	11'64" x 7'70"
Master Bedroom	4.15m x 3.72m	13'64" x 12'20"
Total Apartment Area	87m²	935ft²

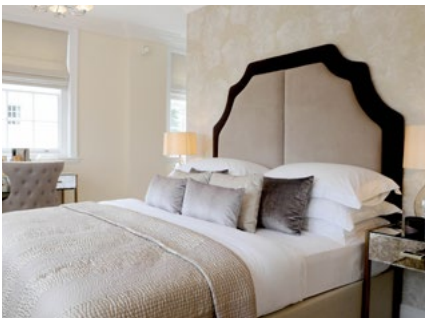


Audley St George's Place
2 Church Road, Edgbaston, West Midlands B15 3SH
0121 454 5270
www.audleyretirement.co.uk

Built-in wardrobes in bedrooms have not been included in the overall dimensions.
Maximum measurements shown. These pages are intended for marketing purposes only.
Designs vary according to plot and all details should be checked at the Sales Office.
January 2017

Audley St George's Place

2 Chains Court (B01)
Ground Floor Apartment



1 bedroom ground floor apartment

This stunning one bedroom apartment has so much Victorian charm and plenty of space. The living/dining room has two large feature bay windows with west-facing and south-east facing views.

Property specifications:

- A large living/dining room with lots of natural light
- Good size SieMatic kitchen with bay window and space for a breakfast table
- The bedroom has double fitted wardrobes with an en-suite with shower and bath
- Separate WC

Audley St George's Place
2 Church Road, Edgbaston, West Midlands B15 3SH
0121 454 5270
www.audleyretirement.co.uk

Photos for illustration purposes only