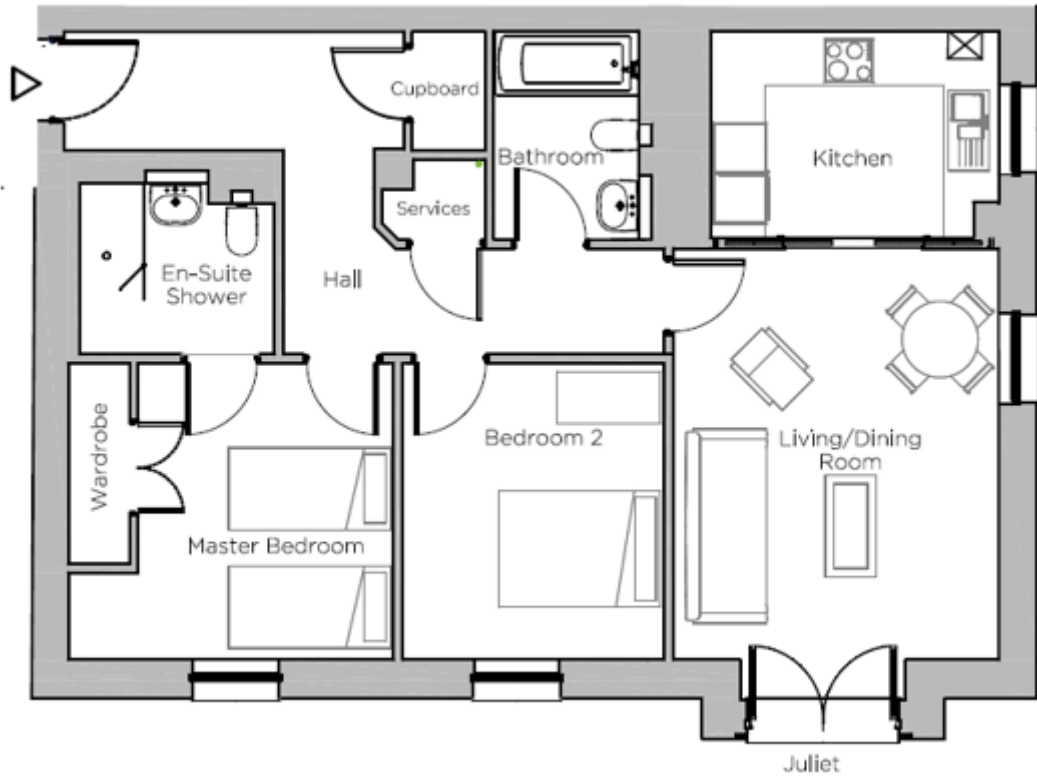
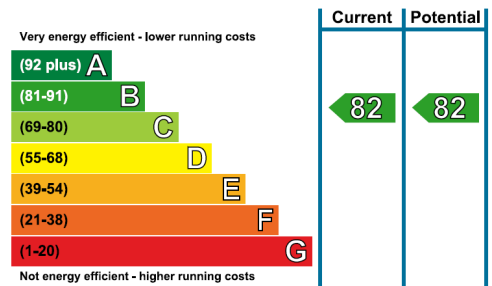


Audley Ellerslie

2 Adkins Court
Two bedroom pre-owned ground floor apartment

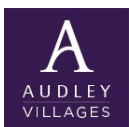


Internal Measurements	Metric (m)	Imperial (ft)
Living/Dining Room	3.84m x 4.85m	12'7" x 15'11"
Kitchen	3.40m x 2.44m	11'2" x 8'0"
Master Bedroom	3.01m x 3.50m	9'11" x 11'6"
Bedroom 2	3.08m x 3.50m	10'1" x 11'6"
Total Sq.ft 884		



Audley Ellerslie
Abbey Road, Malvern, Worcestershire WR14 3HL
01684 438 400 www.audleyretirement.co.uk

Built in wardrobes in bedrooms have not been included in the overall dimensions.
Maximum measurements shown. These pages are intended for marketing purposes only.
Designs vary according to plot and all details should be checked at the Sales office.
Sept 2017



Audley Ellerslie

2 Adkins Court

Two bedroom pre-owned ground floor apartment



Two bedroom ground floor apartment

This delightful two bedroom apartment has a dual aspect living/dining room and enjoys lovely views from the Juliet balcony. There is a luxurious SieMatic kitchen with integrated Neff appliances and a family bathroom with Villeroy & Boch sanitaryware. The property offers two good sized bedrooms, including the master which is enhanced by fitted wardrobes and an en suite shower room.



Property specifications

- Spacious living/dining room with a Juliet balcony
- SieMatic kitchen with integrated Neff appliances
- Master bedroom with an en suite shower room
- Guest bedroom
- Family bathroom
- Storage facilities in the hallway
- Car parking available - issued on a permit basis
- Close to the central village amenities



£375,000 (other fees apply)

Monthly management fee £839.96

Annual Ground Rent £500

Viewing by appointment with the sales office.

Audley Ellerslie
Abbey Road, Malvern, Worcestershire WR14 3HL
01684 438 400 www.audleyretirement.co.uk

