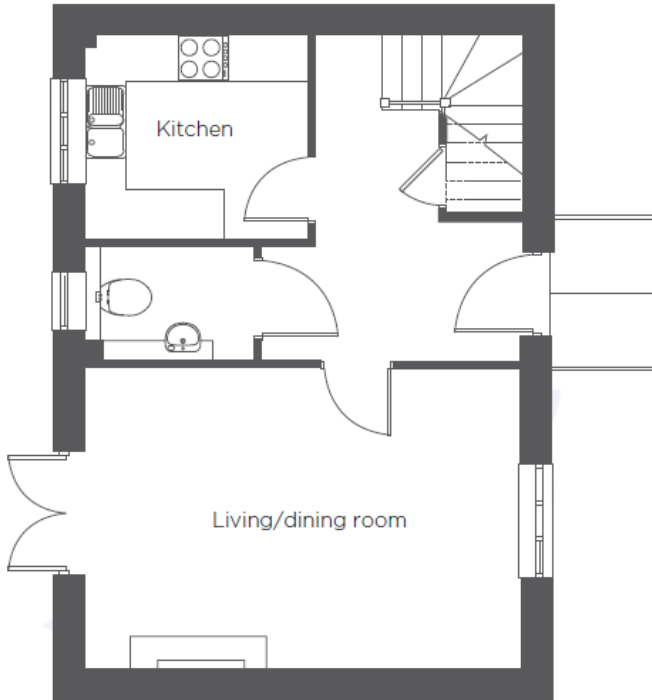


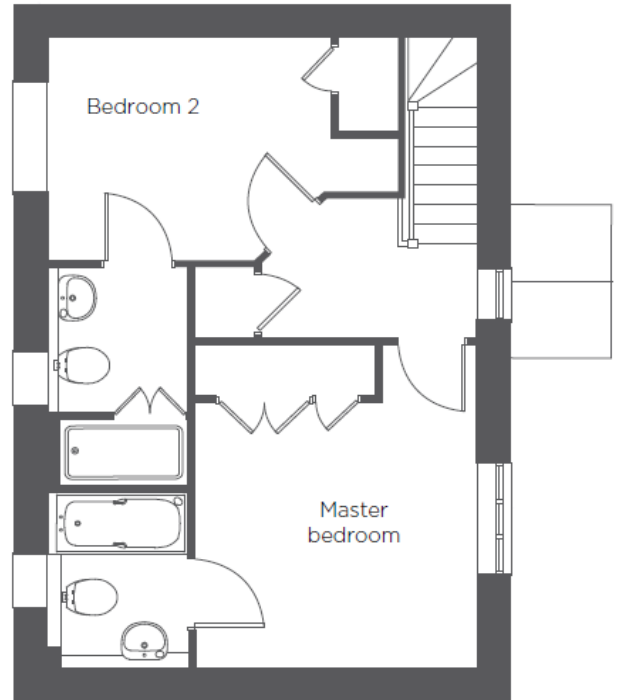
# Audley St Elphin's Park

2 Crompton Close

Two bedroom 'pre-owned' semi-detached cottage

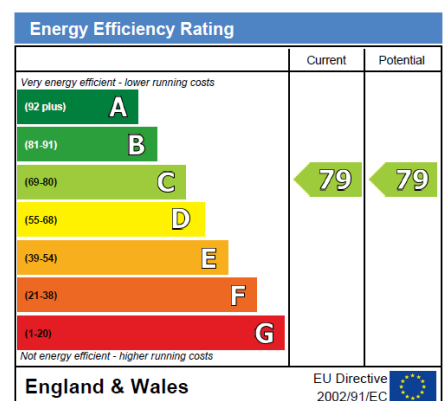


Ground floor



First floor

Internal Measurements	Metric (m)	Imperial (ft)
Living/Dining Room	3.65m x 5.30m	12'1" x 17'4"
Kitchen	2.55m x 2.70m	8'4" x 8'10"
Master Bedroom	3.90m x 3.45m	12'11" x 11'5"
Bedroom Two	2.75m x 4.15m	9'2" x 13'9"
Total Sq.Ft	904	



Audley St Elphin's Park  
 Dale Road South, Darley Dale, Matlock DE4 2RH  
 01629 733 337 stelphinssales@audleyvillages.co.uk

Built in wardrobes in bedrooms have not been included in the overall dimensions.  
 Maximum measurements shown. These pages are intended for marketing purposes only.  
 Designs vary according to plot and all details should be checked at the Sales office.  
 July 2017

# Audley St Elphin's Park

2 Crompton Close

Two bedroom 'pre-owned' semi-detached cottage



## Two bedroom semi-detached cottage

This two bedroom cottage is conveniently located in Crompton Close and only a short walk to St Elphin's House, the home of the Audley Club. There are two good sized bedrooms, both of which enjoy fitted wardrobes and en suite bath/shower rooms. The cottage is perfectly completed by a spacious living/dining room with access to the private garden, a separate kitchen and a downstairs W.C.

## Property specifications

- South-facing property
- A spacious living/dining room with access to the private enclosed garden
- Two good sized bedrooms both with en suite bath/shower rooms
- Fitted kitchen with integrated appliances
- Allocated parking space

**£289,000** (other fees apply)

Monthly management fee £731.55

Annual Ground Rent £100.00

Viewing by appointment with the sales office.

Audley St Elphin's Park  
Dale Road South, Darley Dale, Matlock DE4 2RH  
01629 733 337 [stelphinssales@audleyvillages.co.uk](mailto:stelphinssales@audleyvillages.co.uk)

