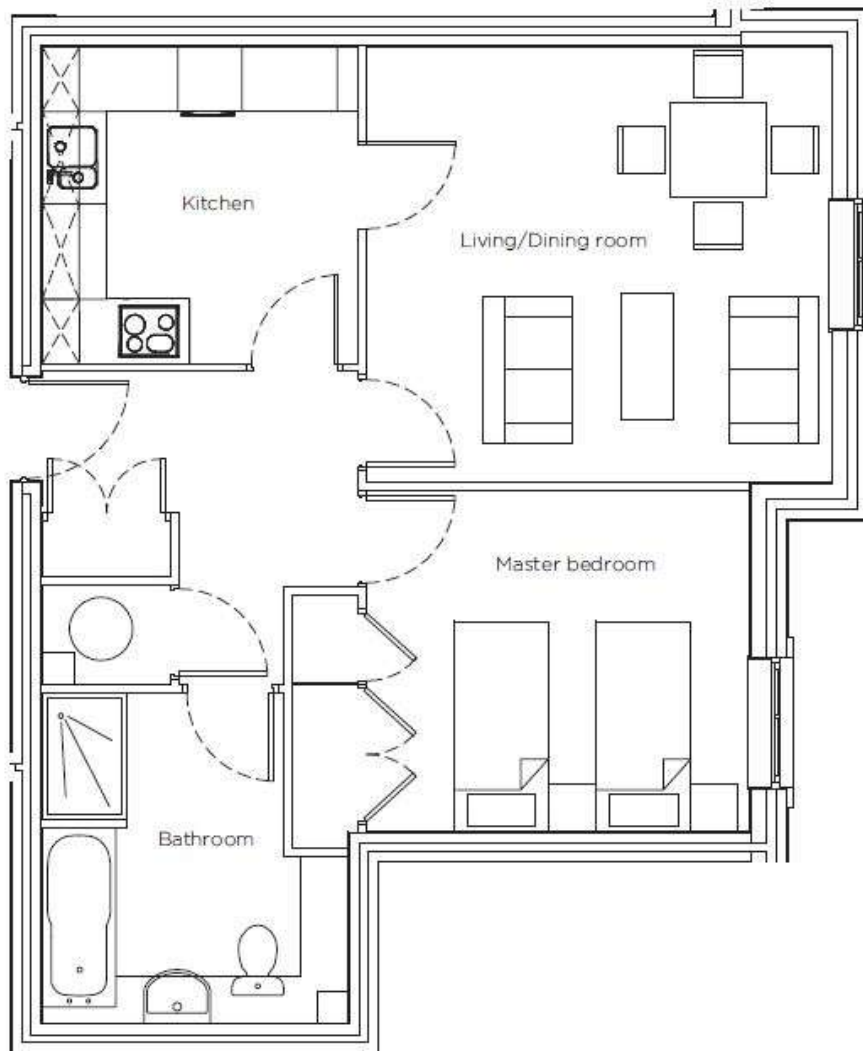
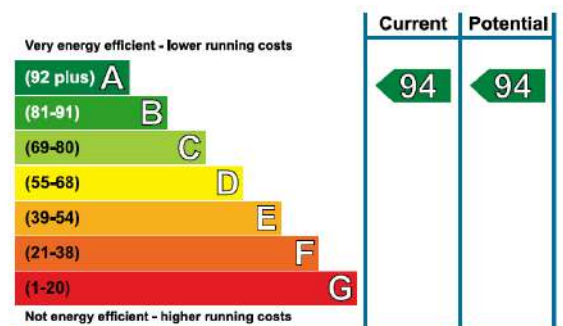


Audley Inglewood

27 Inglewood House
First Floor Resale Apartment

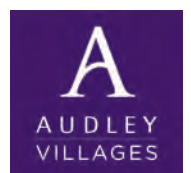


Internal Measurements	Metric (m)	Imperial (ft)
Kitchen	3.00m x 3.00m	9' 10" x 9' 10"
Living / Dining room	4.40m x 4.15m	14' 5" x 13' 7"
Master bedroom	4.35m x 3.25m	14' 3" x 10' 8"
Total Sq.ft 597		



Audley Inglewood
Templeton Road, Kintbury, Hungerford RG17 9AA
01488 682100 inglewoodsales@audleyvillages.co.uk
www.audleyvillages.co.uk

Built-in wardrobes in bedrooms have not been included in the overall dimensions. Maximum measurements shown. These pages are intended for marketing purposes only. Designs vary according to plot and all details should be checked at the Sales Office. January 2017



Audley Inglewood

27 Inglewood House
First Floor Resale Apartment



First floor 1 bedroom apartment

A charming apartment with well laid out accommodation and views across Bevan Court and the gardens. This property features a separate modern kitchen with integrated appliances and a bathroom with a bath and walk in shower. The Audley Club and facilities are just a moments walk away.



Property specifications:

- Sunny reception room, with space for a dining table and glazed door that leads through to kitchen
- Separate fully fitted luxury kitchen; integral appliances included
- Bright bedroom with fitted wardrobes
- Bathroom with bath and separate walk in shower
- Hall with storage cupboard
- Excellent views across Bevan Court and the gardens
- **Guide Price £275,000** (other fees apply)

Viewings by appointment with the sales office.

Photos for illustration purposes only

Audley Inglewood
Templeton Road, Kintbury, Hungerford RG17 9AA
01488 682100 inglewoodsales@audleyvillages.co.uk
www.audleyvillages.co.uk

