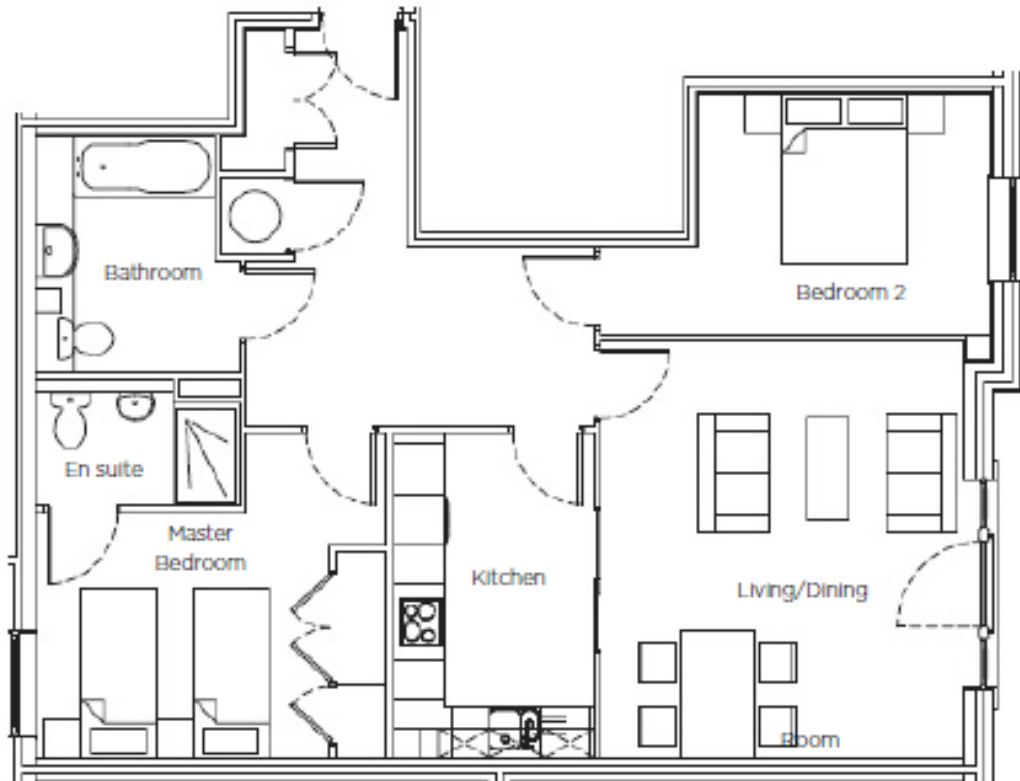


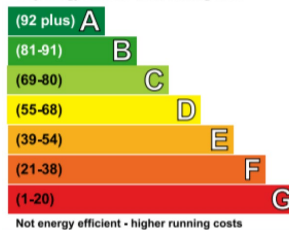
Audley Inglewood

26 Inglewood House
Two bedroom first floor apartment



Internal Measurements	Metric (m)	Imperial (ft)
Living/dining room	4.35m x 4.90m	14'3" x 16'1"
Kitchen	3.80m x 2.40m	12'6" x 7'10"
Master Bedroom	2.90m x 4.20m	9'6" x 13'0"
Bedroom two	2.80m x 3.50m	9'2" x 11'6"
Total Sq.ft 834		

Very energy efficient - lower running costs

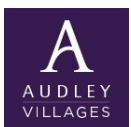


Not energy efficient - higher running costs

Current	Potential
95	95

Audley Inglewood
Templeton Road, Kintbury, Hungerford, RG17 9AA
01488 682 100 inglewoodsales@audleyvillages.co.uk
www.audleyvillages.co.uk

Built in wardrobes in bedrooms have not been included in the overall dimensions.
Maximum measurements shown. These pages are intended for marketing purposes only.
Designs vary according to plot and all details should be checked at the Sales office.
April 2019



Audley Inglewood

26 Inglewood House
Two bedroom first floor apartment

ONE YEAR
MANAGEMENT FEE
INCLUDED



Two bedroom first floor apartment



A stunning two bedroom apartment that is conveniently located on the first floor of Inglewood House to enjoy views over the maintained gardens. The property boasts a south-facing living/dining room with a Juliet balcony which makes the room beautifully bright, and a luxury SieMatic kitchen with integrated appliances. The master bedroom is well-designed and offers fitted wardrobes and an en suite shower room.



Property specifications

- Bright south-facing living room
- Luxury SieMatic kitchen with island
- Master bedroom with en suite shower room
- Guest bedroom with fitted wardrobes and study area
- Family bathroom
- Hallway with fitted 'Fired Earth' tiled flooring
- Fully fitted water softener and drinking tap



Guide Price £477,950 (other fees apply)

Monthly management fee £768.67
Bistro credit £59.13
Annual ground rent £250

Viewing by appointment with the sales office.

Audley Inglewood
Templeton Road, Kintbury, Hungerford, RG17 9AA
01488 682 100 inglewoodsales@audleyvillages.co.uk
www.audleyvillages.co.uk

