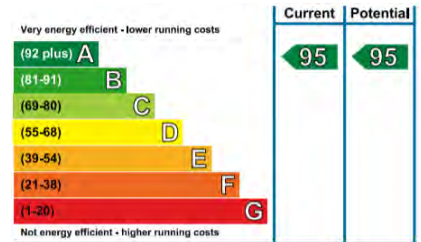


Audley Inglewood

26 Inglewood House
First Floor 'Pre-owned' Apartment

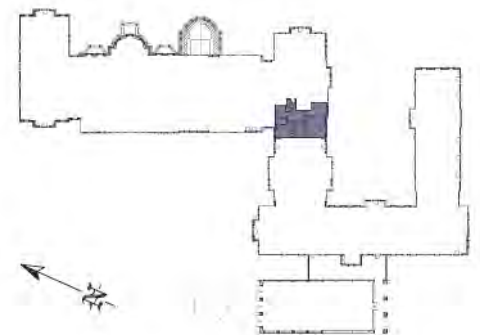


Internal Measurements	Metric (m)	Imperial (ft)
Kitchen	3.80m x 2.40m	12' 6" x 7' 10"
Living / Dining room	4.35m x 4.90m	14' 3" x 16' 1"
Master bedroom	2.90m x 4.20m	9' 6" x 13' 0"
Bedroom 2	2.80m x 3.50m	9' 2" x 11' 6"

Total Sq.ft 834

Audley Inglewood
Templeton Road, Kintbury, Hungerford RG17 9AA
01488 682100 inglewoodsales@audleyvillages.co.uk
www.audleyvillages.co.uk

Built-in wardrobes in bedrooms have not been included in the overall dimensions. Maximum measurements shown. These pages are intended for marketing purposes only. Designs vary according to plot and all details should be checked at the Sales Office. May 2019



Audley Inglewood

26 Inglewood House
First Floor 'Pre-owned' Apartment



2 bedroom first floor apartment

A beautifully presented south-facing 2 bedroom first floor apartment in a quiet setting with double aspect giving charming outlook over gardens and to Bevan Court.

Property specifications:

- Bright south facing living room
- Luxury Siematic kitchen with island
- Master bedroom with en suite shower
- Bedroom 2 with additional fitted wardrobes and study/work area
- Family bathroom with shower over bath
- Hallway with recently fitted 'Fired Earth' tiled flooring
- Fully fitted water softener and drinking tap

Guide Price £525,000 (other fees apply)

Monthly Management Fee £752.13

Monthly bistro credit £57.86

Annual Ground Rent £250

Viewings by appointment with the sales office.

Audley Inglewood
Templeton Road, Kintbury, Hungerford RG17 9AA
01488 682100 inglewoodsales@audleyvillages.co.uk
www.audleyvillages.co.uk

