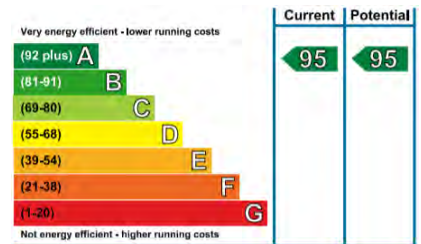


# Audley Inglewood

26 Inglewood House  
First Floor 'Pre-owned' Apartment

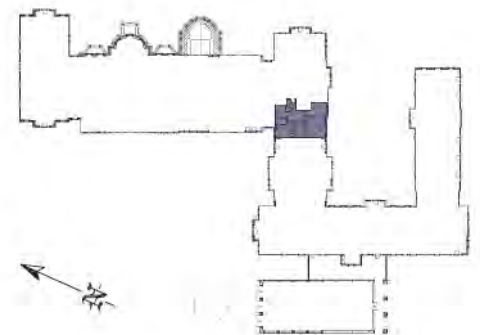


Internal Measurements	Metric (m)	Imperial (ft)
Kitchen	3.80m x 2.40m	12' 6" x 7' 10"
Living / Dining room	4.35m x 4.90m	14' 3" x 16' 1"
Master bedroom	2.90m x 4.20m	9' 6" x 13' 0"
Bedroom 2	2.80m x 3.50m	9' 2" x 11' 6"

Total Sq.ft 834

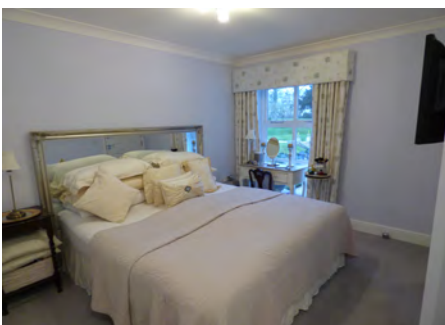
Audley Inglewood  
Templeton Road, Kintbury, Hungerford RG17 9AA  
01488 682100 [inglewoodsales@audleyvillages.co.uk](mailto:inglewoodsales@audleyvillages.co.uk)  
[www.audleyvillages.co.uk](http://www.audleyvillages.co.uk)

Built-in wardrobes in bedrooms have not been included in the overall dimensions. Maximum measurements shown. These pages are intended for marketing purposes only. Designs vary according to plot and all details should be checked at the Sales Office. January 2017



# Audley Inglewood

26 Inglewood House  
First Floor 'Pre-owned' Apartment



## 2 bedroom first floor apartment

A beautifully presented, south facing, two bedroom apartment is located in a quiet setting. With spectacular views over the landscaped gardens and Bevan Court. The property has a fully fitted kitchen with island unit.

Property specifications:

- Bright south facing living room
- Luxury Siematic kitchen with island
- Master bedroom with en suite shower
- Bedroom 2 with additional fitted wardrobes and study/work area
- Family bathroom with shower over bath
- Hallway with recently fitted 'Fired Earth' tiled flooring
- Fully fitted water softener and drinking tap

**Guide Price £545,000** (other fees apply)

Monthly Management Fee £752.13

Monthly bistro credit £57.86

Annual Ground Rent £250

Viewings by appointment with the sales office.

Audley Inglewood  
Templeton Road, Kintbury, Hungerford RG17 9AA  
01488 682100 [inglewoodsales@audleyvillages.co.uk](mailto:inglewoodsales@audleyvillages.co.uk)  
[www.audleyvillages.co.uk](http://www.audleyvillages.co.uk)

