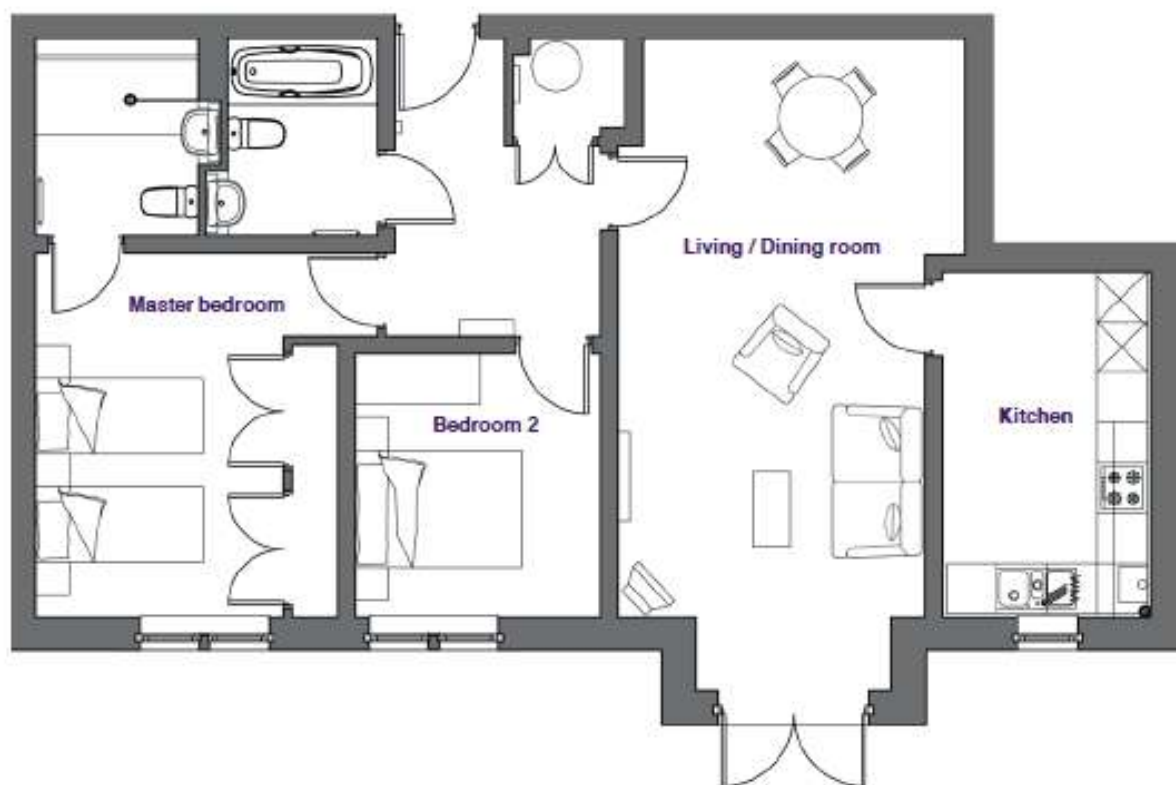


Audley Clevedon

24 Padgett Court

Two bedroom pre-owned ground floor apartment



Internal Measurements

Living/Dining room

Kitchen

Master Bedroom

Bedroom 2

Metric (m)

7.90m x 3.68m

4.14m x 2.50m

4.48m x 2.97m

3.27m x 2.95m

Imperial (ft)

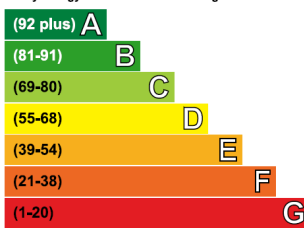
25'11" x 12'1"

13'7" x 8'2"

14'8" x 9'9"

10'9" x 9'8"

Very energy efficient - lower running costs



Not energy efficient - higher running costs

Current	Potential
86	86

Audley Clevedon
Ben Rhydding Drive, Ben Rhydding, Ilkley, LS29 8AQ
01943 601 964 clevedonsales@audleyvillages.co.uk
www.audleyvillages.co.uk

Built in wardrobes in bedrooms have not been included in the overall dimensions.
Maximum measurements shown. These pages are intended for marketing purposes only.
Designs vary according to plot and all details should be checked at the Sales office.
June 2012

Audley Clevedon

24 Padgett Court

Two bedroom pre-owned ground floor apartment



Two bedroom ground floor apartment

A spacious two bedroom apartment that is conveniently located on the ground floor of Padgett Court. This south-facing property enjoys a large patioed area that is perfect for outdoor dining. There is a separate SieMatic kitchen with modern fitted appliances and a spacious master bedroom with fitted wardrobes and an en suite shower room.



Property specifications

- Spacious living/dining room with double French doors leading onto a private terrace
- Modern SieMatic kitchen with integrated appliances
- Master bedroom with fitted wardrobes and an en suite shower room
- Guest bedroom
- Separate house bathroom

Guide Price **£420,000** (other fees apply)

Monthly management fee £788.46

Annual ground rent £250

Viewing by appointment with the sales office.



Audley Clevedon
Ben Rhydding Drive, Ben Rhydding, Ilkley, LS29 8AQ
01943 601964 clevedonsales@audleyvillages.co.uk
www.audleyvillages.co.uk

