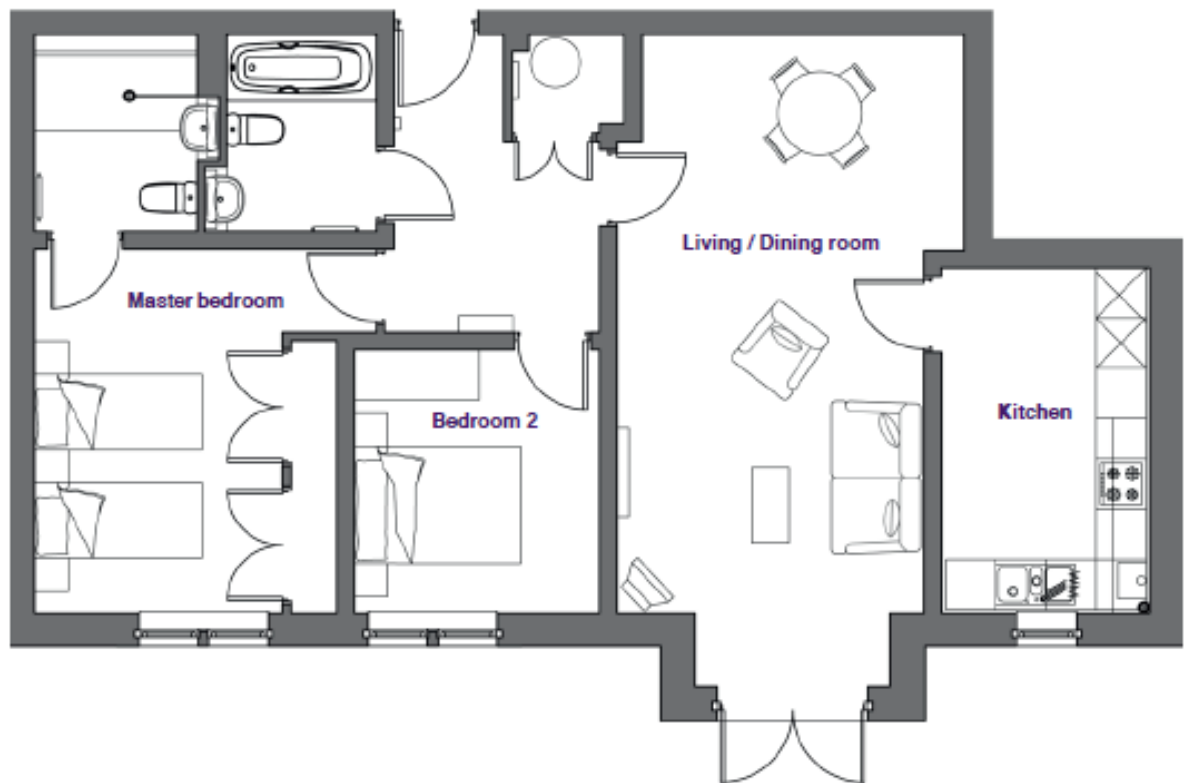
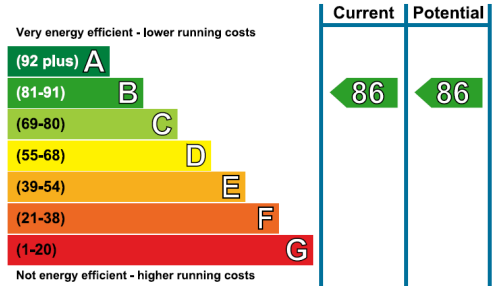


Audley Clevedon

24 Padgett Court
2 Bedroom pre-owned ground floor apartment



Internal Measurements	Metric (m)	Imperial (ft)
Living/Dining room	7.90m x 3.68m	25'11" x 12'1"
Kitchen	4.14m x 2.50m	13'7" x 8'2"
Master Bedroom	4.48m x 2.97m	14'8" x 9'9"
Bedroom 2	3.27m x 2.95m	10'9" x 9'8"



Audley Clevedon
Ben Rhydding Drive, Ben Rhydding, Ilkley, LS29 8AQ
01943 601 964 clevedonsales@audleyvillages.co.uk
www.audleyvillages.co.uk

Built in wardrobes in bedrooms have not been included in the overall dimensions.
Maximum measurements shown. These pages are intended for marketing purposes only.
Designs vary according to plot and all details should be checked at the Sales office.
April 2019

Audley Clevedon

24 Padgett Court
2 Bedroom pre-owned ground floor apartment



2 bedroom ground floor apartment

A spacious two bedroom apartment that is conveniently located on the ground floor of Padgett Court. This south-facing property enjoys a large patioed area that is perfect for outdoor dining. There is a separate SieMatic kitchen with modern fitted appliances and a spacious master bedroom with fitted wardrobes and an en suite shower room.



Property specifications

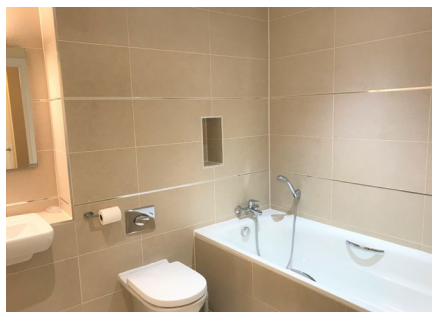
- Spacious living/dining room with double French doors leading onto a private terrace
- Modern SieMatic kitchen with integrated appliances
- Master bedroom with fitted wardrobes and an en suite shower room
- Guest bedroom
- Separate house bathroom



Guide Price **£420,000** (other fees apply)

Monthly management fee £771.49
Annual ground rent £250

Viewing by appointment with the sales office.



Audley Clevedon
Ben Rhydding Drive, Ben Rhydding, Ilkley, LS29 8AQ
01943 601 964 clevedonsales@audleyvillages.co.uk
www.audleyvillages.co.uk

